



# Uniquely Yours

Celebrating  
Worcester's  
Independent  
Businesses

**shop eat play | live worcester**











## Welcome

One of the features that people notice when they explore Worcester city centre for the first time is the quality and variety of independent businesses. This makes Worcester a great place to visit, return and indeed live here. The city's independent businesses have ridden the economic downturn extremely well and I believe the quality and variety of their offer is better than ever. More independent bars, cafés, pubs and restaurants have opened than closed in recent years and the reputation for the city's evening and night time offer is growing. Our office and professional services sectors have everything you would expect of a county town and more, plus the excellent levels of customer service across the independent sector are a key reason why people keep returning to them.

Put simply, Worcester BID is run by businesses for businesses and a major commitment to promoting our independent businesses has been through our Uniquely Worcester campaign which has run since the Worcester Business Improvement District (BID) was

launched in 2010. By collectively promoting the sum of the fantastic parts that our great city has, we can really present a fantastic case for why locals and visitors alike should come and sample our 'indies'. As you will see throughout this publication, the businesses who are part of this new book have come together to present such a varied and high quality offering to you, the reader.

This book is a celebration of what Worcester's independent businesses can offer you and we hope that you will take pleasure reading through our debut production and be inspired to come and see us. We would love to see you sample what we are lucky enough to enjoy every day.

*Nicki Williams*

### **Nicki Williams**

Chairman of the Board of Directors,  
Worcester Business Improvement District





## Contents

Map	8
Attractions	11
Fashion	32
Jewellery	55
Children's Toys & Clothes	64
Sport, Travel & Outdoor	71
Arts & Crafts	79
Gifts, House & Home	88
Electrical/Technology	105
Entertainment & Leisure	111
Restaurants, Cafés & Takeaways	116
Pubs, Bars & Clubs	142
Food & Drink	158
Accommodation	166
Health & Beauty	168
Education	182
Estate Agents	184
Professional Services	194
Business Listings	207

## Feature pages

Something to tempt all tastes	5
A magical mix of independent shops...	6
Jewel In The Crown	10
So much to do...	29
An unrivalled array of quirky independents	31
A wonderful location in the heart of England	70
A shopping experience like no other...	206
The making of Uniquely Yours	214

## Local tips from local people

Amanda Savidge Director, The Museum of Royal Worcester	26
Henry Sandon OBE Authority on Royal Worcester porcelain and curator of the Dyson Perrins Museum	27
Claire Wright & Jenny Plant Co-owners, Stripes Fashion & Beauty	54
Ian Quartermaine Owner, Ian Quartermaine Jewellers	63
Mark & Heather Stewart Owners, Wise Owl Toys	69
Caroline Gregory Owner, Cookmate	104
Jason Smith Director, Ventutec	110
Victoria Hamilton-Jones Owner, Bindles Bar & Brasserie	141
David Leatherdale Chief Executive, Worcestershire County Cricket Club	165
Judy Owen Owner, YOUplus	181
Julia Williams Owner and co-director, Premier Places	193





## Something to tempt all tastes...

Welcome to Uniquely Yours, showcasing Worcester's extensive range of independently run shops, cafés, bars, restaurants and professional services, representing a rich diversity that complements Worcester's unique character perfectly.

Each one has staked its reputation on the quality of product and service it provides, and plays its part in making Worcester such a great place to live, visit, shop, eat and play.

From high end fashion and diamond rings to traditional toys and craft supplies, and from

à la carte dishes and freshly made artisan food to tempting cocktails and custom-blended coffee, Worcester truly has something to tempt all tastes.

For easy reference, businesses are grouped together in different categories. So, if you're looking for clothes, simply go to the 'Fashion' section; if you're looking for a coffee shop, go to 'Restaurants, Cafés & Takeaways', and so on.

We want to make sure your visit to Worcester is easy, memorable and enjoyable and that you'll keep coming back to discover more.



## A magical mix of independent shops...

*New Street*

*The Cornmarket,*

*Reindeer Court*

*The Gallery*

*The Shambles*

*Pump Street*

Quirky streets and famous landmarks combine with medieval architecture and ancient battle sites, all within walking distance, to offer a shopping experience that's second to none.

Lined with picturesque black and white timber frame buildings, New Street is typical of Worcester's streets, combining old with new and offering a great mix of shops, pubs and restaurants. A green arch leads to the picturesque Reindeer Court, a former coaching inn, with a host of independent outlets, while The Shambles houses one of the oldest shopping precincts in the city, and The Gallery, once The Market Hall, is now a vibrant shopping arcade on two tiers, housing many independent outlets.

Friar Street is one of Worcester's most historic and picturesque shopping streets, home to Greyfriars' House and Garden, Tudor House and Worcester's oldest pub, The Cardinal's Hat; and a short walk down the High Street takes you to Cathedral Plaza, opposite the world-famous Cathedral and Elgar's statue.





*Angel Place  
St Nicholas Street  
Broad Street  
& more*



At the other end of the High Street is The Cross, where many of the city's banks are located, always useful to know when you're on a shopping trip, and this leads on to The Foregate and Foregate Street, dominated by the green railway bridge.

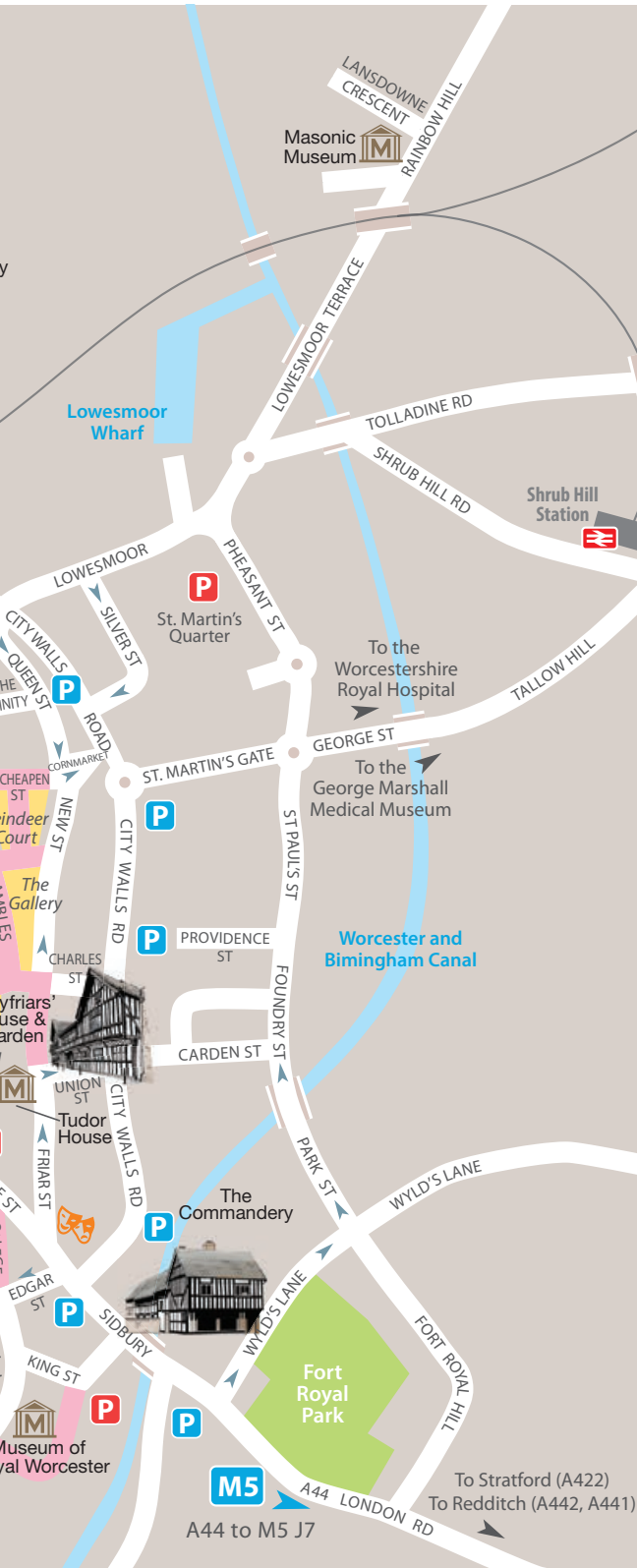
Off The Foregate lies The Hopmarket, where you'll find a magical mix of independent shops situated in a pleasant courtyard, with seating around a central fountain, and this leads on to St Nicholas Street, with further hidden gems to discover.







## Parking in Worcester



**RingGo™** **P**

Pay to park by mobile phone  
at Worcester City Council  
car parks with **RingGo™**.

- Cashless and ticketless
- Get parking text reminders
- Extend your stay wherever you are
- Avoid cutting short your visit

All you need is a mobile phone  
and a debit or credit card!

**01905 880055**  
**myringgo.co.uk**



## CROWN Gate

There is no need to hurry when  
enjoying your day in Worcester. The  
CrownGate Shopping Centre pay on  
exit car park is now open 24 hours a  
day, 7 days a week. Park overnight at  
this pay on exit car park for a flat rate  
of £1.00 5pm - 9am or take advantage  
of £1.00 all day parking on Sundays.  
Visit [www.crowngate-worcester.co.uk](http://www.crowngate-worcester.co.uk)  
for full details.

## NCP Cathedral **NCP**

For early birds, the NCP Cathedral  
Plaza car park has all day parking for  
just £3.60 if you arrive before 9.30am.  
Visit [www.ncp.co.uk](http://www.ncp.co.uk) for full details.



## Jewel in the Crown

With its 60 plus stores, CrownGate Shopping Centre offers a mix of High Street names and quirky independents, providing a treasure trove of fashion, homewares and gifts, along with bars, brasseries and coffee shops, located in two great shopping areas.

Friary Walk offers a variety of stores for all the family, perfect for everyday essentials, along with Quinn's Coffee House & Restaurant and Boston Tea Party, serving delicious home cooked food; while Chapel Walk showcases a fantastic selection of distinctive independents, ranging from fashion and bespoke jewellery to handmade accessories and traditional sweets.

Chapel Walk also houses the 'Food Quarter' with its fantastic range of eateries, such as Coffee Dough, The Green Room and House, delivering traditional and contemporary menus, custom blended coffee and homemade cakes and pastries.





## Step back in time...

Worcester is a beautiful Cathedral and University city, with a wealth of history, heritage and culture to explore, best known for its magnificent Cathedral where you can find King John's tomb and the Elgar memorial window, and the Museum of Royal Worcester, home to the world's largest collection of Worcester porcelain. Other ancient buildings within strolling distance include The Commandery, Tudor House, Greyfriars' House & Garden, the historic Guildhall and The Old Palace.

A walk up the High Street takes you to the Crown Court, with its statue of Queen Victoria, the City Art Gallery and Museum, and another hidden gem, The Infirmary Museum, located on the University of Worcester campus.

With a heritage that takes in the Romans, Vikings, Elizabeth I and the English Civil War, there's so much to discover in Worcester. And if you really want to bring Worcester's rich and varied history to life, why not take a guided walking tour?





'Royal Worcester' and the C51 crown device are registered by and used under kind permission from Portmeirion Group UK Ltd to whom all rights are reserved.



# Museum of Royal Worcester



**Open Mon - Sat:**

**Mar - Oct:** 10am - 5pm

**Nov - Feb:** 10am - 4pm

Severn Street WR1 2ND

T: 01905 21247

[www.museumofroyalworchester.org](http://www.museumofroyalworchester.org)

TheMoRW @themorw

## Two and a half centuries of Royal Worcester.

**Royal Worcester's history spans two and a half centuries, and the company's magnificent legacy is reflected in the stunning displays on show in the Museum.**

Visit the museum and see the world's largest collection of Royal Worcester...

Learn how the importation of tea created a demand for teapots and bowls able to withstand boiling water, starting a phenomenal demand for porcelain...

See how Royal Worcester touched the lives of those who lived in the city, many of whom worked at the factory...

Step back in time in the Georgian, Victorian and 20th century galleries...

Find out about the factory's history and remarkable workforce via an informative audio tour...

Buy vintage and antique Royal Worcester china and porcelain, figurines, cake stands, gifts, specialist books, pieces to match your dinner service, and more in the Museum Shop.



# The Commandery

Peel back the layers of history...

**Admission:** Adults £5.50,  
Concessions £4.25, Children £2.50,  
Family ticket (2 adults and up to  
3 children) £13.00  
Free admission for Worcester City  
residents (please show Council Tax Bill)

**Open:** Mon - Sat 10am - 5pm  
Sun 1.30pm - 5pm





The Commandery is a unique Grade I listed site, dating back to the 13th century. A fascinating mix of historical architecture and social history combine to bring this building's colourful past to life. Over the centuries The Commandery has had many roles including a mediaeval monastic hospital, but it is most famous for its role as the Royalist Headquarters during the Battle of Worcester – the deciding battle of the English Civil War.



Explore historic rooms, discover fascinating stories and enjoy charming, peaceful gardens in the heart of historic Worcester.

Disabled lift and toilet, guide and assistance dogs welcome. Two pay and display car parks located opposite.

**For details of events and children's activities, pick up a leaflet at the Tourist Information Centre.**

Sidbury WR1 2HU

T: 01905 361821

E: [commandery@worcestershires.gov.uk](mailto:commandery@worcestershires.gov.uk)

[www.museumsworcestershire.org.uk](http://www.museumsworcestershire.org.uk)

 The Commandery  @worcestermuseum

**MUSEUMS  
WORCESTERSHIRE**  
Art • Heritage • Events

# The Infirmary

Two hundred years of medical  
stories brought to life

*Challenge your  
ideas of mental  
health*

*Compare health  
today with other  
times and places*

*Share your  
thoughts*

THE INFIRMARY  
Exploring Worcester's Medical Stories



LOTTERY FUNDED

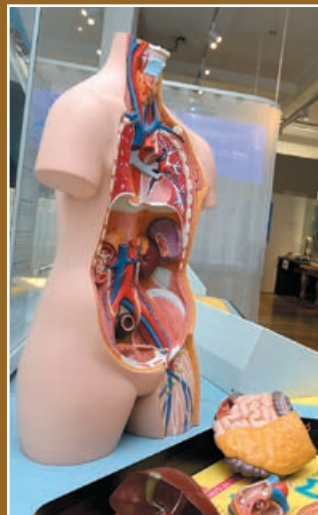


The Infirmary is a fascinating 21st century interactive exhibition that combines history, science, art and technology, bringing to life the medical stories of one of England's oldest infirmaries.

Situated within a ward of the former Worcester Royal Infirmary, now part of the University of Worcester's City Campus, the evocative exhibition explores Worcester's medical stories through characters that worked in the building over the past 200 years.

Visit the exhibition to learn about medical practices and technology over the last 200 years, explore memories and occupations, and discover the important role Worcester played in the formation of the British Medical Association.

Tours and private viewings for groups can be arranged at a reasonable cost, and an annual programme of events can be found on leaflets available throughout the city.



**Open:** Mon - Fri 9am - 5pm  
Sat 10am - 4pm  
**Free admission**

University of Worcester, City Campus, Castle Street WR1 3AS

T: 01905 543273 E: [m.macleod@worc.ac.uk](mailto:m.macleod@worc.ac.uk)

[www.worcester.ac.uk/your-home/the-infirmary](http://www.worcester.ac.uk/your-home/the-infirmary)

The Infirmary Worcester @infirmaryworc





*A really lovely, welcoming place. All were very friendly and knowledgeable*



## Take time out to appreciate the past

Tudor House Heritage Centre brings the story of vanished Worcester to life. Discover this fine timber-framed building with a 17th century plaster ceiling in one of Worcester's prettiest and most historic streets.

We offer a warm and friendly welcome to an interesting venue with things to see and do for all the family. Our displays show a history of the house since Tudor times – over the years, it's been used as a weaving shop, pub, Cadbury Coffeeshop, ARP Warden's office and 1950s school clinic!

Take time out to appreciate the past, with displays, children's activities including the Tudor Rat trail, a wonderful old-fashioned coffee shop with waitress service and vintage china, a gift shop, and events and talks throughout the year. We also hold digital copies of archive photographs of Worcester from the Clive Haynes collection.



### Wednesday craft activities in school holidays

Free admission

**Open: Weds, Thurs** (May - Sept)  
and **Sat** 10am - 4pm

Friar Street WR1 2NA  
T: 01905 612309 / 426402  
[www.tudorhouse.org.uk](http://www.tudorhouse.org.uk)  
f TudorHouseWorcester

# Worcester Cathedral

## Royal tombs and ancient secrets

Worcester Cathedral is an inspirational building with royal tombs, stunning architecture, medieval cloisters, magnificent Victorian stained glass windows, St Wulfstan's Crypt, Prince Arthur's Chantry and spectacular views from The Tower.

Parts of the Cathedral date back to 1084, and unique features include the first round Chapter House in the world and the oldest remaining royal effigy located on King John's tomb. There's also a gift shop and coffee shop, and visits to the Cathedral Library can be arranged by appointment.

Guided tours take place Monday to Saturday at 11am and 2.30pm (from March to end November), and the Tower is open on Saturdays, Bank Holidays and school holidays, 11am - 4.30pm, weather permitting, from Easter to the end of October. (Charges apply.)

A rich musical heritage includes Choral Evensong, a programme of free lunchtime recitals in the summer, concerts throughout the year and the Three Choirs Festival every three years.

Free to explore and open every day from 7.30am - 6pm, Worcester Cathedral extends a warm welcome to everyone!

**Diverse programme of events and exhibitions, see website for details.**



Chapter Office, 8 College Yard WR1 2LA

T: 01905 732900

[www.worcestercathedral.co.uk](http://www.worcestercathedral.co.uk)

 Worcester Cathedral

 @WorcCathedral









# Worcester City Art Gallery and Museum

**Free admission**





Founded in 1833, Worcester City Art Gallery and Museum is one of the oldest regional museums in the country. Visitors can see Worcester's stunning art and museum collections, learn about the city's fascinating history and see historic and contemporary art exhibitions at the only gallery in the county able to show artworks of national and international significance.

Discover a baby polar bear, dinosaur footprints and archive Worcestershire Sauce exhibits, plus Steward's Chemist Shop, taken piece by piece from its original location in the High Street. We are also home to the Worcestershire Soldier display.

We are a family-friendly venue, with activities throughout the building, delicious food served in our Balcony Café, and a gift shop selling a wide range of souvenirs, greetings cards by local artists and handmade craft. See our website for a list of forthcoming exhibitions or our annual leaflet available at Tourist Information Centre.

**Open: Mon - Sat 10.30am - 4.30pm**

**Free entry**

**See our website for school holiday workshops and family activities**

Foregate Street WR1 1DT T: 01905 25371  
 E: [gallerymuseum@worcestershire.gov.uk](mailto:gallerymuseum@worcestershire.gov.uk)  
[www.museumsworcestershire.org.uk](http://www.museumsworcestershire.org.uk)  
 f Worcester City Art Gallery & Museum  
 @worcestermuseum



# The Guildhall

A stunning venue for weddings and receptions




High Street WR1 2EY

T: 01905 722018

E: [Guildhallbookings@worcester.gov.uk](mailto:Guildhallbookings@worcester.gov.uk)

[www.worcester.gov.uk](http://www.worcester.gov.uk)

 Worcester Guildhall

**Open: Mon - Sat 9am - 4.30pm**



Worcester's Guildhall is a truly magnificent building, dating back to 1721, giving visitors and residents a glimpse into the City's rich and varied heritage, and providing beautiful rooms for wedding ceremonies and receptions.

Once a seat of justice, with its own prison, the building has a fascinating history, and was even visited by King George III in August 1788, along with Queen Charlotte and three of the princesses, to declare the Assembly Room open!

Available to hire for up to 200 guests, it's a perfect wedding, conference or meeting venue. For further details, please contact Ben Schiffmann, Guildhall Supervisor.



# The Old Palace

Worcester Diocesan Board of Finance

The Old Palace is a Grade I listed building that dates back to the 11th century, giving a fascinating insight to Worcester's history, as well as being the centre of Diocesan administration, a role it has held for over 900 years.

Over the years, The Great Hall provided the setting for various historic events, and several monarchs were received here, including Charles I during the Civil War and, nearly a hundred years earlier, Queen Elizabeth I, who was entertained for a week by Bishop Nicholas, an event that brought about his financial ruin!

Visitors can sit in the Great Hall and take in the magnificent view over the River Severn to the Malvern Hills, and discover the Chapel, with its many changes and intriguing history. Dating back to the 13th century, the large vaulted chamber known as Abbot's Kitchen is one of the oldest parts, although was never actually used as a kitchen!

With a number of public rooms open to visitors, a café for refreshments, and beautiful gardens to explore, the Old Palace is definitely worth a visit and a warm welcome is extended to everyone.



## Open for visitors:

Building: Mon - Fri 10am - 4pm

Café: Mon - Fri 10am - 2.30pm

The Old Palace, Deansway WR1 2JE

T: 01905 20537

E: [reception@cofe-worcester.org.uk](mailto:reception@cofe-worcester.org.uk)

[www.cofe-worcester.org.uk](http://www.cofe-worcester.org.uk)



Registered Charity No: 247778

Amanda Savidge  
Director  
The Museum of Royal Worcester  
Severn Street WR1 2ND



Q. What is the best place for an after-work drink?

A. I love the buzzy atmosphere of Zizzi's, it only takes a few minutes to get to and from the Museum, and I think a nice glass of red wine and tapas is a great way to end the day.

Q. Where would you recommend going to celebrate a client win or positive business news?

A. The Olive Branch is a great place to entertain; the building is very attractive, the food is amazing and it offers individual, stylish and relaxed surroundings.

Q. What is your favourite independent business in the Worcester BID area?

A. I love Anja Potze in Friar Street. Her shop radiates elegance and quality and is packed with absolutely beautiful treats. The Museum of Royal Worcester's shop is also really special as the stock constantly changes and it also sells vintage and antique Royal Worcester that was made here in Worcester!

Q. What would you recommend as a hidden gem in Worcester for visitors to discover?

A. I have to say and truly mean the Museum of Royal Worcester! When you understand how skilled the factory workforce were, their technical achievements, their camaraderie and the high regard customers from all around the world place on their pieces of Royal Worcester it makes me swell with pride.

Q. Do you have a top tip for visitors to Worcester?

A. Tell all your friends about it and keep coming back, it's a great place to visit!

Q. What is your favourite part of Worcester?

A. Between Friar Street, the Cathedral, Museum of Royal Worcester and the River - the area is steeped in beauty, history and interest.

[museumofroyalworchester.org](http://museumofroyalworchester.org)



Henry Sandon MBE  
notable authority on Royal  
Worcester porcelain and  
curator of the Dyson Perrins  
Museum for many years

Museum of Royal Worcester  
Severn Street WR1 2ND



Q. What is the best place for an after-work drink?

A. The Cardinal's Hat in Friar Street. It's a haven of peace and quiet with ancient panelled rooms. The Cathedral choir were wont to go there after services, they called it 'the thirst after righteousness'!

Q. What is your favourite place for lunch in Worcester?

A. You can't beat Ye Olde Talbot on the corner of Friar Street and Sidbury.

Q. What would you recommend as a hidden gem in Worcester for visitors to discover?

A. The Infirmary Museum set up in the one time Royal Infirmary; you can carry out an operation and listen to Elgar's music written to soothe asylum patients. The building in Castle Street, now part of the University of

Worcester, houses the Boardroom where the British Medical Association (BMA) was founded and a beautiful chapel built by the benevolence of Jenny Lind, the Swedish Nightingale.

Q. Do you have a top tip for visitors to Worcester?

A. Aim to stay for more than one day. There are so many things of interest to see.

Q. What is your favourite part of Worcester?

A. The area around the Cathedral. In Severn Street is the Museum of Royal Worcester, which has the finest collection of Royal Worcester in the world; across Sidbury is the magnificent medieval Commandery, and towering over all is the Cathedral, housing the tombs of Prince Arthur and King John.

[museumofroyalworcester.org](http://museumofroyalworcester.org)





## So much to do...

Whether you're a local resident or visitor to Worcester, there's always something to explore. The city's attractions not only boast great heritage, but also feature contemporary exhibitions, guided tours, concerts, theatre shows and much more.

An exciting programme of events includes the Love Worcester Heritage Festival; colourful Riverside Arts Markets; the Worcester Festival; the Worcester Marathon; the Motor Festival, featuring the latest models and rare classic cars; Litfest & Fringe; The Big Busk; the world's oldest choral music festival, Three Choirs Festival; Foodie Festival, a celebration of all things tasty; Uniquely Worcester, celebrating Worcester's independent businesses; Severn Festival; Worcester's Chocolate Day; the Worcester Show; the Worcester Music Festival and the Victorian Christmas Fayre.

There are plenty of other activities to get involved in, including walking tours, arts & crafts classes, cookery workshops, live music, interactive museum events, ghost hunts, historic re-enactments and so much more...







## An unrivalled array of quirky independents...

As a modern city steeped in heritage and history, Worcester offers shoppers a truly unique experience, and is one of the best shopping destinations in the Midlands.

An unrivalled selection of independent retailers includes a wide range of boutiques and specialist shops, selling everything from the latest designer names and vintage clothing to shoes, jewellery, babywear and hobby equipment. Then there are gifts, toys, homeware, furniture, technology, cycles, musical instruments, beauty products and much, much more.

When you visit, make sure you explore Worcester's hidden gems, including Friar Street, New Street and Charles Street, The Foregate and Hopmarket, Sidbury, Cathedral Plaza, Reindeer Court and The Shambles, The Cornmarket and refurbished Gallery. Each has its own distinctive character and offers a fabulous range of speciality shops.

With plenty of car parking, coach drop-off points and centrally located bus and train stations, you can literally enjoy retail therapy as soon as you arrive. Mainly pedestrianised, the city centre provides a relaxed, pleasant experience, whether you're shopping, browsing or simply taking in the sights.

And with a plethora of places to eat and drink, including historic pubs, traditional cafés, artisan coffee shops and top-class restaurants, there's plenty of choice, whether you're looking for a morning coffee, leisurely lunch, afternoon tea or evening meal. You certainly won't find a better place to unwind after a day's serious shopping.





## A fashionista's paradise

Casual or contemporary, formal or fun, whether you require clothes for everyday wear or a special event such as a prom or wedding, you'll find just what you're looking for in Worcester's vast array of independent fashion shops and boutiques.

From designer names to vintage clothing, from men's tailoring to streetwear, the range and selection is phenomenal, with stock changing continually, providing unique and individual outfits, shoes and accessories you won't find on the High Street.





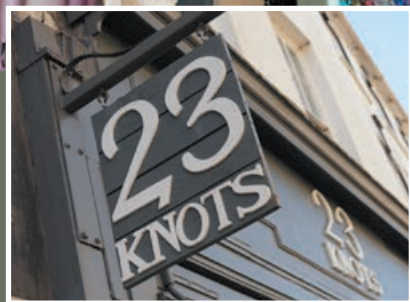
# 23 Knots

98 High Street WR1 2HW

T: 01905 616391 E: [info@23-knots.co.uk](mailto:info@23-knots.co.uk)

 @23knots

[www.23-knots.co.uk](http://www.23-knots.co.uk)



## Something different on the High Street

With its Mediterranean influence, rustic décor and range of ethical products, 23 Knots brings something different to Worcester's High Street.

Call in and take a look at our distinctive Fairtrade clothing and individual accessories, perfect for all sizes and ages. We also have a wide selection of homewares, ranging from bedding, lanterns and photo frames to one-off reclaimed pieces of furniture, perfect for any home and any budget.



Our fragrance collection of bath treats and soaps are all-natural and smell amazing, and make sure you check out our collection of leather handbags, all exclusive to 23 Knots!

Our in-house artist, Dawn, produces individual and affordable watercolours all year round, and you may just be lucky enough to catch her working at the shop desk!

Friendly, personal service assured, along with fresh, new style and unique products arriving weekly.





# Acanthus

1 Cornmarket WR1 2DJ

T: 01905 611006 E: catherine@boldry.wanadoo.co.uk



## Looking for an outfit that's 'Uniquely Yours'?

Look no further than Acanthus, specialising in colours, textures and tones to enhance any palette, age and size, with ranges from English and continental designers, including Out of Xile, Sahara, Flax, Adini, Nice Things, Vetono and Ewa i Walla.

Call in and see our fabulous choice of eclectic women's wear, mostly in natural fibres. Our aim is to make your experience as pleasurable and memorable as possible, ensuring you leave with an outfit that is totally exclusive and allows your personality to shine through.

Over 30 years, retail experience and a passion for colour and texture ensures a fabulous array of eclectic clothing and accessories.



### Open:

Mon - Sat 9.30am - 5.30pm





# Court Leather

## See, touch and smell the leather...

...that's the invitation from Court Leather, located in Reindeer Court, just off the Shambles.

An established family business, with over 30 years experience, Court Leather offers superb range of leather goods including ladies and mens leather jackets, sheepskin coats and rugs, belts, handbags, purses, wallets, gloves, cowboy boots and moccasins.

With one of the largest collections of leather jackets outside London, there's a fantastic choice, and with leather jackets from just £69.50, plus many sale bargains, Court Leather offers value for money to rival internet prices.

What's more at Court Leather you can try on jackets to ensure a perfect fit, and benefit from the highest standards of personal service.

If you're looking for leather, the message is simply: try Court Leather first.

### Open:

Mon - Sat 10am - 5pm

21A Reindeer Court WR1 2DS

T: 01905 23662 [www.courtleather.co.uk](http://www.courtleather.co.uk)



**2 Great Walks,  
1 Enjoyable Journey**

CrownGate Shopping Centre is divided into two separate shopping areas; Friary Walk and Chapel Walk. With over 60 great stores of High Street fashion, independent surprises, places to meet and all the car parking you need, your shopping journey begins and ends at CrownGate.

Friary Walk is connected to the city centre car park at CrownGate, bus station and The Hive and offers a variety of stores for all the family, perfect for everyday essentials.

Within Chapel Walk you'll find some of the best loved household names on the High Street, whilst also showcasing a fantastic selection of distinctive independents offering a unique shopping experience.

The Food Quarter at Chapel Walk offers the largest range of eateries within the city centre all in one location, each delivering their own traditional and contemporary menus, speciality alcoholic drinks, custom blends of coffee beans and teas, accompanied by homemade cakes and pastries to make your mouth water.

Whatever you're shopping for, you're sure to find the perfect gift, special occasion outfit or everyday treat at CrownGate.



#### **Opening Times:**

##### **Friary Walk & Chapel Walk at CrownGate:**

**Mon - Sat** 9am - 5:30pm

**Sun** 10.30am - 4.30pm (individual shops may vary)

##### **City Centre Car Park at CrownGate:**

24 hours a day, 7 days a week.



Friary Walk & Chapel Walk  
WR1 3LE

T: 01905 610065

[www.crowngate-worcester.co.uk](http://www.crowngate-worcester.co.uk)

CrownGate Shopping Centre

@CrownGate1





# Embrace

## Beauty. Dignity. Confidence.

Embrace is a unique, luxurious boutique created by a breast cancer survivor who struggled to find the products she needed during her treatment. We specialise in products for women who are survivors of cancer or are undergoing treatment including high quality wigs and headwear, mastectomy lingerie, swimwear and active wear, breast forms, natural cosmetics, skincare, body care and nail care, and lovely gifts for women undergoing treatment.

By popular demand we have introduced a range of mainstream lingerie which includes larger and petite sizes, wedding and prom, sports, maternity and shapewear.

We provide a personal and high quality service in a luxury boutique setting, designed to make our customers feel comfortable and at ease, and our products have been hand-picked with beauty, style and confidence in mind.

Our fitting rooms are large and comfortable with plenty of room for friends and relatives, either in the fitting rooms or our comfy seating area.

We regularly advertise treats and offers for our customers. For more details please contact us.



*We support the  
Worcester Breast  
Unit Campaign.*



### Open:

Mon - Sat 9.30am - 5pm

23 Reindeer Court WR1 2DS

T: 01905 619031

[www.embracecancerbeauty.co.uk](http://www.embracecancerbeauty.co.uk)

 [embracecancerbeauty](https://www.facebook.com/embracecancerbeauty)

 [@connect\\_embrace](https://twitter.com/connect_embrace)

# EMPORIO

## Ladies designer clothing and accessories

Emporio is an inspirational boutique offering on-trend styling, personal service and top name brands such as Armani Jeans, Nicole Farhi, Paul Smith, Joseph, Almost Famous, Moschino and many more.

*Clothes that have a strong image, that say: I am a confident, stylish woman!*



### Open:

Mon - Sat 10am - 5.30pm

33 Friar Street WR1 2NA

T: 01905 726643

E: [emporioworcester@btconnect.com](mailto:emporioworcester@btconnect.com)

[www.emporioworcester.co.uk](http://www.emporioworcester.co.uk)



# Exchange & Smart

45 New Street WR1 2DL

T: 01905 611522

E: [shop@exchangeandsmart.com](mailto:shop@exchangeandsmart.com)

[www.exchangeandsmart.com](http://www.exchangeandsmart.com)



## The smart way to buy designer clothes

Exchange & Smart is a dress agency, established in 1994, with two floors full of wonderful very-nearly-new handbags, shoes, clothes and jewellery.

Sizes range from 6-22, with prices starting from just £10 and continually changing stock. We offer High Street favourites and top designer names, with Nicole Farhi, Paul Smith, Armani, Moschino, Joseph, Hobbs, Phase 8, Jaeger and Boden among our popular sellers, as well as a 'cheap and cheerful' rail.

We provide a relaxed, happy atmosphere and will leave you to browse unless you require assistance.

Whether you are looking for something casual, smart or for a special occasion, or just want to treat yourself, please call in – we're confident we can find something that's just right.

**Open: Mon - Fri 10am - 4.30pm Sat 10am - 5pm**



ROCK  
FOLLIES  
VINTAGE





# Fourleaf Clothing

## Streetwear, tattooing, body piercing and band merchandise

Visit Worcester's alternative clothing store for the latest streetwear, branded merchandise, tattooing and piercing studio and much more.

We offer an ever-evolving selection of products and services, and pride ourselves on our unrivalled customer service.

Branded clothing includes licensed music merchandise, Cupcake Cult, Vixxin, Spiral etc.

Call in and see our unique selection or take a look online.

**Join the Fourleaf Clothing online mailing list and receive £5 off your first order!**

2 New Street WR1 2DN

T: 01905 745171

[www.fourleafclothing.co.uk](http://www.fourleafclothing.co.uk)

 fourleafclothing  @fourleafclothing

**Open:**

**Mon - Sat 9am - 5.30pm Sun 11am - 4pm**





# Fuel

## Distinctive fashion, footwear and accessories

Unique and distinctive fashion and footwear for the discerning buyer.

Two floors of the latest designs and brands, including Desigual, Vila, Only, Religion, Vagabond, Levis, Lee, Bench, Vero Moda, Guess, Yest and Heavenly Feet.

Footwear from Fly London, Heavenly Feet and Vagabond.

Firmly established as one of Worcester's favourite independents.

View the items online, then pop in and try them on!

11 Reindeer Court WR1 2DS  
T: 01905 22639  
E: [fuelclothing1@talktalk.co.uk](mailto:fuelclothing1@talktalk.co.uk)  
[www.fuel-clothing.co.uk](http://www.fuel-clothing.co.uk)







# Halo

## Discover Halo Style...

Visit Halo and discover a treasure trove of wonderful items to create the perfect outfit from head to toe.

Browse at your leisure and enjoy the relaxed, friendly atmosphere with style advice on hand if needed.

We are constantly looking for clothing, accessories and footwear that is a little bit different, and take only one delivery of each style, with collections changing week to week.

It's worth popping back to see what's new - make sure you have a Halo loyalty card in your bag!

17 Chapel Walk, CrownGate WR1 3LD

T: 01905 24466

E: [info@halostyle.co.uk](mailto:info@halostyle.co.uk)

[www.halostyle.co.uk](http://www.halostyle.co.uk)

 Halo Style Boutique  @halo\_style



With us, it's about the whole experience. We want our customers to look forward to coming back to us and to feel comfortable bringing their families with them. We are very good at entertaining while our customers have a try on.

# Individual Tailoring

## Bespoke men's tailoring...

Individual Tailoring has operated as a tailoring company for over 40 years and specialises in producing high quality, made-to-measure suits and ready made menswear at a competitive price.

We pride ourselves on being one of the last remaining workrooms for tailoring in Worcestershire and offer the complete package, from choosing your cloth and design through to the final fitting, available from just £495.

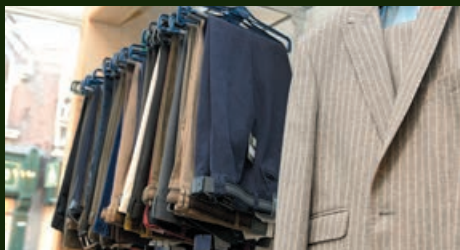


Our unique tailoring workrooms cater for all your tailoring needs, and we offer a full in-house alteration service for both mens and womenswear, and a complete dry cleaning service.

Visitors are assured of a warm, friendly welcome and the highest standards of professional service. Simply mention the 'Uniquely Yours' book and receive a 10% discount.

We offer a wide selection of off-the-peg suits, ranging from classic to modern, along with jackets and trousers, shirts, ties and knitwear, and now stock the popular 'Guide' of London range – all displayed in our unique showroom.

16 The Foregate WR1 3QD  
T: 01905 28375  
E: [individualtailoring@ovi.com](mailto:individualtailoring@ovi.com)  
[www.individualtailoring.co.uk](http://www.individualtailoring.co.uk)  
f Individual Tailoring  
@ITailoring



**Open: Mon - Sat 9am - 5.30pm**





15 Pump St WR1 2QX

T: 01905 612731

E: [info@jingoclothing.co.uk](mailto:info@jingoclothing.co.uk)

[www.jingoclothing.co.uk](http://www.jingoclothing.co.uk)

 jingo clothing

 @jingo-clothing

Jingo is at the forefront of men's fashion and streetwear, pioneering new brands and offering exclusive products not found elsewhere.

If you're looking for something a little different from retail chain stores, come and take a look. We are constantly seeking

out the best new brands to stay ahead of the game.

We offer a friendly atmosphere, good customer service and great clothes in limited quantities to ensure exclusivity. Pop in and take a look, you'll always find something different!

Visit our website for free next day delivery and online offers!

# JINGO

Open: Mon - Sat 9am - 5.30pm Sun 11am - 4pm

# Keith Scarrott Shoes

Individually designed fashion shoes from Italy and Spain



Keith Scarrott is an independent fashion retailer, trading for over 38 years, offering exclusive shoe, boot and handbag collections. Sourced directly from small, family-owned factories in Italy and Spain, items are genuine one-off, individual styles, often made to Scarrott's own design.

Started in 1976 by Keith Scarrott, the business today is run by daughter, Sophie Scarrott, with two boutique-style shops in Cheltenham and Worcester. Each shop is a treasure trove of beautiful pieces, most of which can't be found anywhere else in the UK.

Ranges include classic staples, latest trends, must-have designs, new colours, summer and winter fashions; all available to buy online at [www.keithscarrott.co.uk](http://www.keithscarrott.co.uk)

*Call in and see  
the famous Keith  
Scarrott boots*



**Open: Mon - Sat 9.30am - 5.30pm**

99A High Street WR1 2HW

T: 01905 28444

E: [keithscarrott@hotmail.co.uk](mailto:keithscarrott@hotmail.co.uk)

[www.keithscarrott.co.uk](http://www.keithscarrott.co.uk)



# Nicholas Smith Formal Suit Hire



## Specialists in formal men and boys wear for hire and sale



We offer traditional and contemporary Morning, Evening, Prom and Highland Wear for day and evening events.

The wide selection of styles now available are complimented by over 80 different waistcoat designs and accessories.

Our suits are sourced from Europe's leading suppliers.

**We have a full range of hire wear in stock, enabling you to try on your complete outfit at our premises, ensuring a perfect fit on the day.**

Nicholas Smith is a family run business established in 1972, with outlets in central Worcester and Brierley Hill, near the Merry Hill shopping centre.



### Special Offers

- Groom goes free when 5 other outfits are booked.
- Wedding abroad?  
Enjoy 50% discount on your 2nd and 3rd weekends.
- Proms and students 20% discount.
- Group bookings of evening wear up to 20% discount.

Please visit our website and enjoy browsing for your special occasion.

### Open:


**Mon** 9am - 5.30pm, **Tue** 10am - 5.30pm,  
**Wed, Fri & Sat** 9.30am - 5.30pm, **Thur** 10am - 6pm  
Late night appointments available on Thursday and Saturday by appointment only.

1 New Street WR1 2DN

T: 01905 726900

E: [suithire@nicholassmith.net](mailto:suithire@nicholassmith.net)

[www.formalsuithire.com](http://www.formalsuithire.com)

 Nicholas Smith Formal Suit Hire



Pockets is one of the leading independent, luxury retail groups in the Midlands and the only designer menswear boutique in Worcester selling the world's leading designer brands such as Paul Smith, Hugo Boss, Ralph Lauren and Armani.

Our cool, minimal interior allows each brand to express its identity and reflects our belief in the importance of individualism and attention to detail.

Pockets assures you of a personal shopping experience, with a choice of the best fashion and accessories created by the world's leading labels, and tailoring to ensure a perfect fit. We pride ourselves on providing helpful, honest assistance and advice. To see our full range, please visit our online shopping service.

**15% discount available**  
18<sup>th</sup> Sept - 31<sup>st</sup> Oct 2014

**Open:**  
Mon - Fri 9.15am - 5.15pm  
Sat 9am - 5.30pm

39 Friar Street WR1 2NA  
T: 01905 613113 E: kate-pockets@live.co.uk www.pockets.co.uk  Pockets Menswear





# Prophecy



3 Cornmarket WR1 2DJ  
 T: 01905 27733  
[www.prophecystore.com](http://www.prophecystore.com)  
 f Prophecy-Worcester  
 @Prophecymenswear  
 @perfectdject

## Seriously cool menswear

Prophecy is a premium urban men's clothing shop that's contemporary, new and different, as owner Grant Gibbs explains:

**Q. What makes your shop different?**

A. We offer unique brands sourced from around the world. We love to personally dress and advise customers, and offer friendly, informative help with no pressure to buy. Happy to see you, just call in, have a mooch and say 'hi'.

**Q. What brands do you offer?**

A. Vivienne Westwood, Blood Brother, J Lindeberg, Perfect Defect, Billionaire Boys Club, Black Scale, Clothing UK, Crooks and Castles, Wood Wood, Asics, Saucony, Rains, Raised by Wolves, Jilted Royalty, Son Of Wild.

**Q. Can you tell us about yourself?**

A. I have over 15 years retail experience and was the Manager of Roscoe and Crombie for 9 years before opening my own store. Born local, I pride myself on being friendly and helpful to my local and new customers. I have been trained by some of the biggest brands, such as Diesel and G-Star, as a denim specialist and retail merchandiser.

**Q. Are there any particular products you'd like to mention:**

A. The new Vivienne Westwood and Perfect Defect stock is amazing. Come and see our latest stock, it'll blow you away. Now stocking a selection of sneakers to finish off your outfits from Asics and Saucony.

**Q. When are you open?**

A. Monday - Saturday 10.30am - 5.30pm,  
 Sunday 11.30am - 4.30 pm

**"Wanna be stylish?**

**This is the place. Great stock."**

**"They play great music."**

**"Nice clothes, dudes."**

**"Get all your gear from here."**

# Reloaded

Open:  
Mon - Sat 10am - 5pm



## Grab it today! Tomorrow it might be gone forever!

Welcome to Reloaded, the glamorous new women's clothing boutique in Worcester city centre, with gorgeous new stock arriving every two weeks.

We stock fashion celeb copies that come in and out quickly, so our prices are reasonable to help you keep up with the latest trends. Call in and you'll find something for everyone, age 13 up to 60, sizes 6 - 16. But we only carry certain amounts of each style - once we've sold out, it's gone and we'll get something new!

Our beautifully designed changing rooms feature flattering light and mirror angles, helping you to shop in comfort, and we're most happiest if we can be your own personal shopper, helping to find our perfect outfit. Just ask!

Either shop in-store or order items you see on our facebook page by phoning the store and we will post out to you.

Ladies, it's time to RELOAD your wardrobe!  
We look forward to seeing you...

Unit 1, Crown Passage WR1 3LL  
T: 01905 25975  @reloaded\_worcs



**'Like' our facebook page & see all our new stock every two weeks, plus competitions for free giveaways and discount codes**

 Reloadedfashion



# Rock Follies Vintage

## Vintage is our passion

Nostalgic atmosphere, vintage tunes and an array of authentic men's and women's vintage clothing, jewellery, accessories, hats, bridalwear, luggage, homeware and more... ideal for vintage events, gifts, special occasions, and everyday wear...



Visit our shop for a unique selection of individual and unique vintage clothing, all lovingly sourced and in superb condition. Stock is sorted into types, sizes and decades, with knowledgeable staff on hand for historic advice, styling help, an alteration service is also available.

All items carefully packed in tissue, gift boxes and paper twist bags. Come in, have a mooch and look out for seasonal promotions, giveaways and vintage lovers' gift vouchers.

25 Reindeer Court WR1 2DS

T: 01905 20085

E: [rockfolliesvintage@hotmail.com](mailto:rockfolliesvintage@hotmail.com)

[www.rockfolliesvintage.co.uk](http://www.rockfolliesvintage.co.uk)

f RockFolliesVintage    t @rockfolliesvint



### Open:

Tue - Sat 10am - 5.30pm

Sun 11am - 4pm

Mother of the bride outfits, mother of the groom dresses, invited guest wedding attire... look your best and make a statement on the day!

We have an extensive stock of wedding outfits, guestwear, prom and evening wear, cruisewear, designer names and a full range of accessories.

Call in and take a look at our dresses, gowns, jackets, hats, shoes and fascinators.

Key designers for this wedding season include Joseph Ribkoff, Linea Raffielli, Michaela Louisa, Condici, John Charles, Pia Michi, Anonymous, NYDJ Jeans, Ann Balon, Ian Stuart, Tia, Frank Lyman, Presen and Mireia. Plus, shoes can be dyed to match any outfit, along with matching handbags.

Serena and the girls offer one-to-one personal service. Why not pop in for a cup of coffee and a browse?



## Sassy Boutique

17 Reindeer Court,  
Mealcheapen Street WR1 2DS  
T: 01905 23539

E: [sassyfashion@ymail.com](mailto:sassyfashion@ymail.com)  
[www.sassyboutique.co.uk](http://www.sassyboutique.co.uk)

 Sassy Boutique  @Sassy Boutique



**Show this advert for a  
10% discount**

**Open: Mon - Sat 10am - 5pm**



## Exclusive fashion and beauty therapy

If you love fashion, you'll love Stripes. We are a family business, run by two sisters, with a passion for the latest fashion, clothing and accessories.

We offer an inspirational boutique with a fresh selection of exclusive designs and niche brands from all over Europe, and regularly travel to fashion fairs in London, Paris and Copenhagen to find interesting, exciting designs and niche brands.

As you've guessed, we hand pick our collections from designers you cannot find on the High Street and particularly love Danish fashion and accessories.

We also specialise in denim and offer a fantastic selection of premium jeans.

Alongside our beautiful clothing, we have beauty treatment rooms offering luxurious facials, body treatments and manicures.

So, why not pamper yourself? Call in and enjoy our beautiful products in a happy, relaxed atmosphere, with friendly, knowledgeable staff.

### Open:

**Shop: Mon - Sat 10am - 5.30pm**

**Beauty Salon: Mon - Sat 10am - 5.30pm**

**Thurs 10am - 9pm by appointment**

13 The Foregate WR1 3QD

T: 01905 26772

E: [info@stripesfashion.co.uk](mailto:info@stripesfashion.co.uk)

[www.stripesfashion.co.uk](http://www.stripesfashion.co.uk)

 Stripes Worcester  @Stripes Fashion



## Stripes Fashion and Beauty



Jenny Plant and Claire Wright  
Co-owners  
Stripes Fashion & Beauty  
13 The Foregate WR1 3QD

Q. What is your favourite place for lunch in Worcester?

A. Our favourite lunchtime venue is Mac & Jac's Café Deli on Friar Street. They have a wide range of teas and delicious cakes and pastries made in their in-house bakery. This family-run café has a great lunch menu and the deli sells a range of artisan products from local suppliers.

Q. What is your favourite independent business in the Worcester BID area?

A. We've chosen two businesses that always inspire us with their passion and creativity. Beautiful Flowers on New Street for their wonderful bouquets and attention to detail - this shop is a treasure trove of all things floral and has such unique products. We also love The Little Pink Cake Shop on Friar Street. This is such a small creative shop with a great selection of occasion cakes. Angela Veronica the owner has so much passion for her cakes that you cannot fail to be inspired.

Q. What would you recommend as a hidden gem in Worcester for visitors to discover?

A. We recently visited Greyfriars' House and Garden on Friar Street for the first time and were amazed by the beauty of this space in the centre of Worcester. The timber-framed merchant's house and garden are magical and for those interested in historical buildings this is a must-see attraction. They also hold lots of events throughout the year.

Q. Do you have a top tip for visitors to Worcester?

A. We are extremely passionate about the wonderful independent shops that Worcester has to offer and would advise visitors to venture off the High Street and to seek out the diverse range of shops, cafés and restaurants that set Worcester apart from other cities. By asking local people for recommendations on where to shop, eat or visit, they will find some of Worcester's best kept secrets.

[stripesfashion.co.uk](http://stripesfashion.co.uk)



## A dazzling display of jewellers

You may be surprised to learn just how many independent jewellers there are in Worcester, each offering something slightly different. Whether you're looking for a diamond ring, famous brand name, unusual piece or bespoke design, you'll be spoilt for choice, particularly as so many jewellers have their own in-house workshop, enabling them to remodel or repair existing jewellery, service watches or create fabulous designs to your personal specification. Prepare to be dazzled and amazed...

# A Forrest-Hay

31 The Cross WR1 3PZ

T: 01905 23771

E: [sales@forresthay.com](mailto:sales@forresthay.com)

**Open: Mon - Sat 9am - 5pm**



## Diamonds are a girl's best friend

Individual, top quality independent jewellers, specialising in diamonds, precious stones, gold and silver jewellery.

We offer a wide range of contemporary and traditional designs for every occasion, sourced from all over the world, including wedding rings and diamond rings selected for their quality and value.

A Forrest Hay was established 39 years ago in Worcestershire and aims to offer something different. We have expert staff who are happy to advise on how to sell or redesign your unwanted items of jewellery. Other services we provide are in house insurance and probate valuations which are examined by our qualified valuers.



10 Friar Street WR1 2LZ

T: 01905 20944

E: [info@anjapotze.com](mailto:info@anjapotze.com)

[www.anjapotze.com](http://www.anjapotze.com)

 Anja Potze Fine Jewellery Ltd

 @AnjaPotze1

**Open: Tue - Sat 10am - 5pm**



# Anja Potze Fine Jewellery

## Unique jewellery by Anja Potze

Anja Potze Fine Jewellery was founded in 1994 by Anja Potze, who moved to the UK from the Netherlands when she was just 21, after perfecting her craft at Amsterdam's respected Vak School of Edelsmeden. She counts a number of well-known faces amongst her clientele and in 2012 was named innovative jeweller of the year by Fope, an

exclusive Italian brand of handmade jewellery.

In 2013, the shop moved to new larger premises on Friar Street, enabling the business to expand with new lines of jewellery and providing a fresh, spacious atmosphere.

Anja specialises in engagement rings and wedding bands, and offers

a wide range of jewellery, including such brands as Dower & Hall, Fope, Ponte Vecchio, Deakin & Francis, along with a bespoke design and remodelling service.

Enjoy a tea or coffee while your jewellery is cleaned, and choose from pieces starting at just £20, with friendly advice and a full gift wrapping service provided.



# Ian Quartermaine

## Jeweller & Goldsmith

**Jeweller, watchmaker and on-site repair workshop**

## Ian Quartermaine Jewellers

Looking for stunning jewellery? Ian Quartermaine offers an outstanding selection of beautiful pieces, including exquisite diamond rings and watches, and is a main agent for Rado, Raymond Weil, Dreyfuss & Co, Seiko and Rotary watches, plus Citizen.

We also have an on-site workshop for all your jewellery repairs and remodelling, and an on-site watchmaker, able to carry out servicing and repairs to all brands, watch batteries and resealing to Rolex, Omega, TAG Heuer, plus others.

Talk to us about your requirements. Our friendly, qualified, highly trained staff have a passion and flair for jewellery and watches, and are happy to advise you.



**Take a look at our stunning selection of diamond rings**

Reindeer Court WR1 2DS

T: 01905 23427

E: [ianquartermaine@hotmail.co.uk](mailto:ianquartermaine@hotmail.co.uk)

**Open:**

**Mon - Sat 9.30am - 5pm**





# ICE Fine Jewellery

**Dramatic and unusual  
handcrafted jewellery**

We have a passion for jewellery design and craftsmanship, and take our inspiration from the ancient art of goldsmithing, along with the dramatic and unusual forms found in nature, architecture, painting and sculpture.

We design and make stunning collection pieces at our on-site workshop, each one exciting, elegant, balanced and exquisitely crafted to the highest quality.

Call in and see our extensive range of diamond engagement and wedding rings, along with a superb selection of designer watch brands.

Visit our store for a unique experience and the opportunity to view the latest technology with CAD, 3D printers and a milling machine.

**On-site jewellery and watch workshops**

**Unique diamond engagement rings  
designed and made in our own workshop**



32 Chapel Walk WR1 3LD  
T: 01905 28333

[www.icefinejewellery.com](http://www.icefinejewellery.com)

**Open: Mon - Sat 9.30am - 5pm**

# Peplow Jewellers

**PEPLOW**  
1818

## Family jewellers since 1818

**Jewellery Design Service**  
**Watch Repairs**  
**Jewellery Insurance**  
**Valuations**  
**Engraving**  
**Watch Batteries**  
**Ear Piercing**

**Open:**  
**Mon, Tue, Thurs**  
**& Fri 9.30am - 5pm**  
**Wed 10am - 5pm**  
**Sat 9am - 5pm**



Founded in 1818, Peplow Jewellers is one of the oldest family firms in Worcestershire, and has been serving customers for nearly 200 years.

We offer extensive expertise in the jewellery business and are proud of the wide range of beautiful jewellery and watch brands at our stores in Worcester and Stourbridge.

Not only do we offer a fabulous selection of watches,

we also have a watchmaker who is a Craft Member of the British Horological Institute and can service Rolex, Omega, Longines, Tissot and many other brands on site.

We pride ourselves on being a family jeweller that can provide everything from advice on buying an engagement ring to servicing that precious Rolex watch, and assure you of receiving a warm, friendly welcome.

25 High Street WR1 2QL T: 01905 24026 E: [shop@peplowjewellers.co.uk](mailto:shop@peplowjewellers.co.uk)  
[www.peplowjewellers.co.uk](http://www.peplowjewellers.co.uk)  [peplowjewellers](https://www.facebook.com/peplowjewellers)  [@peplowjewellers](https://twitter.com/peplowjewellers)



# Rock Lobster

## JEWELLERY WITH STYLE

An independent retail store established since 1998



### A showcase of diamonds, pearls and gems

Rock Lobster is a thriving and growing company that brings you fashionable, on trend and fabulous jewellery.

We specialise in designer jewellery of the highest quality and showcase



one of the finest selections of silver, gold, palladium and platinum jewellery in Worcester.

We have collections from Britain's contemporary designers and top designer brands from around the world, including Thomas Sabo, Endless and Nikki Lissoni. Check out our stunning collection of wedding and engagement rings, shimmering pearls and a glittering array of diamond and gem-set pieces.

We also have an on-site jewellery workshop and in-house designer enabling us to create or remodel any item and make a beautiful bespoke piece of jewellery that is personal and unique to you. If required, we can source diamonds and precious stones from around the world.

**In-house workshop and valuation service**



**Our customer service is excellent – awarded 100% by Worcester BID!**

21 Reindeer Court WR1 2DS

T: 01905 729022 E: [sales@rocklobsterjewellery.com](mailto:sales@rocklobsterjewellery.com)

[www.rocklobsterjewellery.co.uk](http://www.rocklobsterjewellery.co.uk)

Rock Lobster Jewellery @rocklobstershop

**Open:**

**Mon - Fri 10am - 5.30pm**

**Sat 9.30am - 5.30pm**



# Trilogy

## A treasure trove of silver jewellery and designer watches

Main agents for *Karen Millen, T.W. Steel, Hugo Boss, Super Dry, Police, Swiss Military.*

Ian Quartermaine welcomes you to his treasure trove of exquisite silver jewellery, with prices from as little as £10, and possibly Worcester's largest selection of designer watches. Friendly, well trained staff on hand to help and advise.

2 Reindeer Court, WR1 2DS

T: 01905 25764

E: [IanQuartermaine@hotmail.co.uk](mailto:IanQuartermaine@hotmail.co.uk)

**Open: Mon - Sat 9.30am - 5pm**





A portrait of Ian Quartermaine, a middle-aged man with grey hair and glasses, wearing a light yellow shirt and a blue and white striped tie. He is standing in front of a blurred background that appears to be a shop or office.

Ian Quartermaine  
Owner  
Ian Quartermaine Jewellers  
Reindeer Court WR1 2DS

**Q. What is your favourite place for lunch in Worcester?**

A. Saffrons in New Street. It has a great atmosphere, offers quality food at a good price and fast, friendly service. It has a good central location with parking close by and is ideal for lunchtime or evening dining.

**Q. What is your favourite independent business in the Worcester BID area?**

A. Coffee Dough: it offers great quality coffee, served by friendly staff and provides something different to the normal chain of coffee shops.

**Q. What would you recommend as a hidden gem in Worcester for visitors to discover?**

A. Sub Studio Photography. It's a professional photography service, specialising in fun family portraits.

**Q. Do you have a top tip for visitors to Worcester?**

A. Use RingGo parking. It's a scheme that lets you pay for parking without having to visit a machine, introduced by Worcester BID. You just need a mobile phone and credit or debit card. You can park by text, mobile, internet or the special RingGo iPhone app. If you wish, they'll text you when your parking time is running out. For details, see the Worcester BID RingGo leaflet or go to [www.myRingGo.co.uk](http://www.myRingGo.co.uk)

**Q. What is your favourite part of Worcester?**

A. All of it really: great shops, beautiful cathedral, picturesque river, nationally acclaimed cricket ground and racecourse. It really has something for everyone!

A vibrant collage of children's toys and clothing. In the center is a purple rabbit with large ears and a blue bow tie. To its right is a girl's face with blonde hair and blue eyes. Below the rabbit is a small blue bottle with a white label that says 'Drink me'. To the left of the bottle is a mouse. In the bottom left corner is a red hat. The background is a mix of colors and textures, including a red and pink patterned fabric.

## Children's Toys & Clothes

### From toys to baby products...

A family day out in Worcester just isn't complete without a visit to a toyshop and, as you'd expect, the city's independent toyshops excel, with an amazing display of traditional, educational and branded toys to suit every age and every budget. Kids' fashions, too, are well catered for, with exclusive clothing and designs for newborns, toddlers and children, along with a fabulous selection of baby products.



# Kidz Baby Shop



## From newborn to toddlers...

We are a small, friendly, family-run business offering a fantastic range of new and used baby products at affordable prices. Products are suitable for both newborn and toddlers, and include baby clothes, strollers, baby car seats, cots, high chairs, baby rockers, nursery goods and all types of accessories.

Our baby range is expanding weekly and we believe many of our products are unique, not found elsewhere on the High Street.

We pride ourselves on offering a personal, no-pressure-to-buy approach, and will always go the extra mile, which includes sourcing a product if we don't have it in store.

Take a look at our product range online or visit us in person and see the many great bargains we have to offer. We look forward to seeing you.

1 & 2 Charles Street WR1 2AQ

T: 01905 611611

E: [sales@kidzbabyshop.com](mailto:sales@kidzbabyshop.com)

[www.kidzbabyshop.com](http://www.kidzbabyshop.com)

**Open: Mon - Sat 9am - 5pm**  
(excluding Bank Holidays)

**10% discount if you mention seeing  
our feature in Uniquely Yours**



*Offering something different*

# Little Puds

**Open: Tue - Sat 10.30am - 4.30pm**

## Unique styles for your Little People

Looking for something a little different in children's wear? Little Puds offers high quality baby and children's clothing, footwear and accessories, and has exclusivity over many quality brands not easily found on the High Street, including Hatley, Frugi, Pink Ling and Olive & Moss to name but a few.

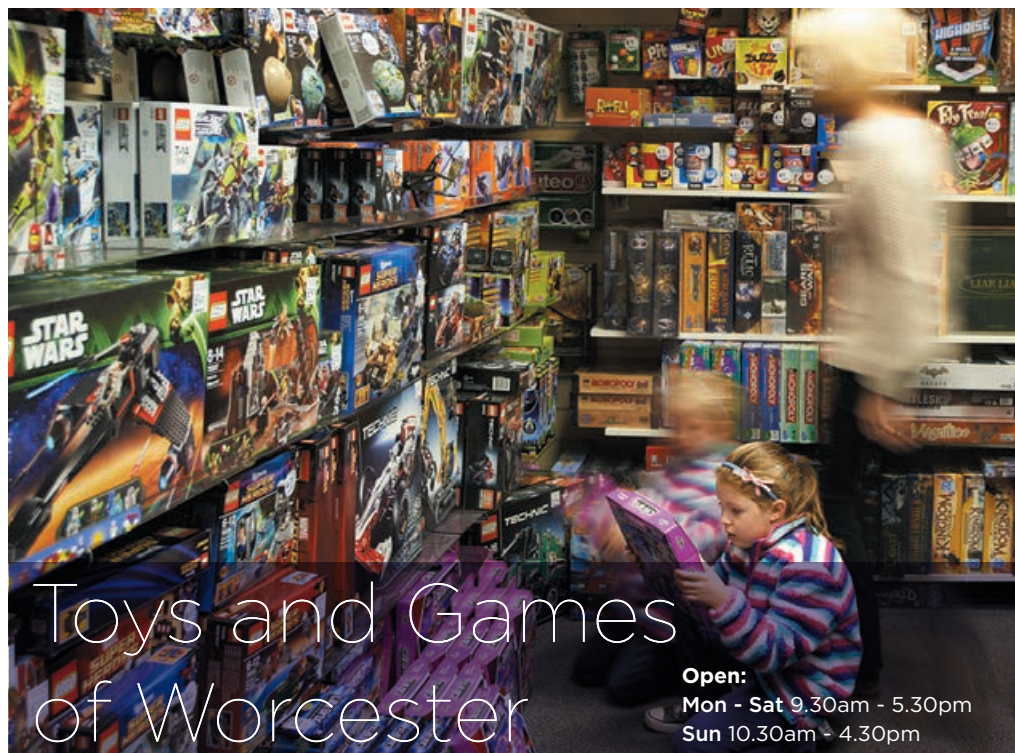
Call in and discover unique styles, fantastic brands and affordable prices. For babies and children 0 - 8 years.

"We are not trying to compete with High Street brands and pride ourselves on offering something different."

**Quote 'Uniquely Yours' when shopping in store to receive 10% discount**

16 Chapel Walk, CrownGate Shopping Centre WR1 1DL T: 01905 780440  
E: [little\\_puds@hotmail.co.uk](mailto:little_puds@hotmail.co.uk)  Little Puds





## Worcester's traditional family toyshop

We are a real toyshop with traditional principles, established for over 20 years, and love what we do!

Come and see us for a wide range of traditional toys and games; latest releases and pocket money toys. We stock all the major brands such as Lego, Playmobil, Airfix, Scalextric, Yu-Gi-Oh!, TY, Magic: The Gathering, Hasbro, Galt, Meccano, Ravensburger, Sylvanian Families, Thomas & Friends and more.

Take a look at our games department for popular classics and the latest in independent board & card games.



**Follow us on Facebook for news, money-off vouchers and free promotional giveaways!**

 Toys & Games of Worcester

47 Broad Street WR1 3LR T: 01905 731099 E: thevideodrome@aol.com  
www.thesuperdrome.com  @ToysGamesWorc



# Wise Owls Toys

5 Charles Street WR1 2AQ

T: 01905 22353 E: Worcester@wiseowltoys.co.uk

www.wiseowltoys.co.uk www.leftshoponline.co.uk

f wiseowltoys @leftnwrite

## An Aladdin's cave of quality toys

Wise Owl Toys is a family-run traditional toyshop offering a huge range of different, inspirational and educational toys, games and puzzles for all ages.

We are an Aladdin's cave of quality toys, with everything from bath toys and early years toys to Maths, English and Science kits for older children; along with creative

kits such as Sequin Art and Shrinkles; construction kits such as Meccano, geomag and Marble Runs; brain teasers for adults and children; and knights, dinosaurs and animal collectables.

We stock all the main brands, including Playmobil, Orchard Toys, Bigjigs Rail, Schleich, WOW Toys and Ravensburger.

Plus, we have traditional wooden games and toys, such as yo-yos, pick-up sticks, jacks, marbles and dominoes.

At Wise Owl Toys, there's always a new game to try... Come and play our favourite game, DOBBLE. Try our BRAINBOX memory games or SUSPEND, the popular hanging balance game that requires a steady hand!



**There is also a left handed section within the shop with scissors, pens, pencils, rulers and more. Also handwriting tuition for left and right-handers!**

**Open**

**Mon - Sat 9.30am - 5.30pm**



Mark and Heather Stewart  
Owners  
Wise Owl Toys  
Charles Street WR1 2AQ



**Q. Where do you like to eat in Worcester?**

A. We like the King Charles House Pub in New Street, it's one of Worcester's oldest buildings, now restored to its traditional style, with a lot of history, a wonderful interior, great ales and fantastic pies and mash.

**Q. Do you have a favourite coffee shop?**

A. We're spoilt for choice when it comes to great coffee houses that take a real pride in what they do. The Ginger Pig on Copenhagen Street does a really nice cup of coffee and their cakes are mouth-watering. The Diglis House Hotel down by the river is another lovely place to sit and enjoy coffee and cakes.

**Q. What are the advantages of working in the Worcester BID area?**

A. The architecture of Worcester is superb. It's a lovely place with many old streets and buildings. Wise Owl Toys is tucked away in Charles Street, but we're right in the middle of the Victorian Christmas market, which

is fabulous. One of the advantages of Worcester BID is that it brings together all the independent businesses and really promotes us in a way we couldn't do individually.

**Q. What makes Worcester different?**

A. Worcester is full of independent shops each offering something different. As a rule, the independent shop-owners are passionate about what they do, aiming to sell quality goods that are unusual and different, and providing exceptional customer service. Add to that Worcester's great location by the river, its architecture and the friendliness of the people, and it all adds up to a great shopping experience for visitors.

**Q. Do you have a top tip for visitors?**

A. Explore the side streets. You never know what you're going to find! It's what makes Worcester different to other cities with the usual High Street names.

[wiseowltoys.co.uk](http://wiseowltoys.co.uk)

## A wonderful location in the heart of England

Worcester is a Cathedral city with a population of just under 100,000 and occupies an enviable location on the River Severn. The city is accessed via two motorway junctions, 6 & 7, off the M5 motorway and is the gateway to some of the country's most unspoilt and picturesque countryside.

Located in the heart of England, Worcestershire offers a cornucopia of experiences, all with quintessential English charm, ranging from the spa town of Malvern, overlooked by the Malvern Hills, providing ideal walking conditions and spectacular views, to the towns of Redditch, Bromsgrove, Droitwich Spa, Kidderminster, Stourport-on-Severn and Bewdley to the north, and many picturesque honey-coloured Cotswold villages to the south.

Whatever time of year you visit, you'll find an endless amount of leisure and recreational activities, ranging from festivals and events to steam train rides and museum visits, and if you're simply looking to escape the hustle and bustle of everyday life, you'll find all the peace and tranquillity you could want in beautiful Worcestershire.





## A great sporting heritage

When it comes to sport, Worcester excels, with a variety of top class clubs and venues. Worcestershire County Cricket Club plays at New Road, one of the most picturesque grounds in the world, with the cathedral providing a stunning backdrop; and Worcester Racecourse enjoys a unique, tree-lined position, nestling on the banks of the River Sever, both offering great days out for all ages. The city is also home to a number of top teams, including rugby union side, the Worcester Warriors; top basketball team, the Worcester Wolves; and local team, Worcester City Football Club.

Following its great sporting heritage, Worcester is also well served by sports, travel and outdoor shops, offering everything you could possibly require for all types of sport, including cycling, motorsports, shooting and fishing, as well as luggage and leather goods for all types of travel.

# F Durrant & Son

Official Barbour stockist



## Country clothing, air rifles and shotguns

Established in 1812, we are Worcester's longest serving independent retailer, selling an extensive selection of country clothing, quality footwear, air rifles, shotguns and air pistols.

Unique to Worcester, we offer a range of products you would struggle to find anywhere else, including the new season of Barbour men's and ladies wear currently in stock.

We also buy, store and repair guns of any description and organise clay pigeon shoots on a corporate and personal level.

Passionate about providing high quality goods and service, we aim to exceed customer expectations and invite you to experience shopping as it should be: enjoyable, memorable and local.

Visit our iconic black and white building, with the only set of original swing doors left in town!

### Open:

Mon - Sat 9.15am - 5.15pm



3 Mealcheapen Street WR1 2DH

T: 01905 25247

E: [sales@fdurrantandson.com](mailto:sales@fdurrantandson.com)

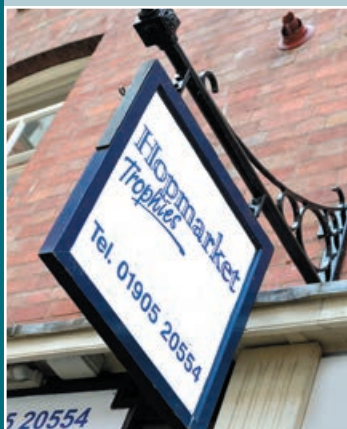
[www.fdurrantandson.com](http://www.fdurrantandson.com)

 [Fdurrantandson](https://www.facebook.com/Fdurrantandson)

 [@fdurrantandson](https://www.twitter.com/fdurrantandson)







# Hopmarket Trophies

## A rewarding Worcester business still going strong

Hopmarket Trophies is Worcester's only dedicated trophy and engraving shop, specialising in providing an extensive range of trophies, cups, shields, medals and general awards in a variety of materials, including glass and crystal, for all types of sports, events and special occasions.

The business was established by the Wooding family in 1976. In August 2004 Lisa and John Ricketts purchased the business and have been running it successfully ever since. This August sees them celebrating the 10th anniversary and they will have no shortage of options when choosing an award to mark the occasion!

Lisa and John pride themselves on great customer service. Not only do they supply a great range of trophies but they also provide:

- \* Quick turnaround times for urgent orders.
- \* Personalised help and advice when choosing from a myriad of options available.
- \* A bespoke engraving service for items purchased from them and for your own items. Most of which is done in their Hopmarket premises.

Hopmarket Trophies has loyal customers who return year after year from not only Worcester and the surrounding area but from as far a field as America and Switzerland.

The website has a link to a brochure which lists the most popular items. Lisa and John also deal with most of the UK (and some European) suppliers and carry a range of brochures in their shop from which you can order.

For any questions about any trophies/awards or their engraving service then please don't hesitate to call Lisa who will be happy to help you.

### Open:

Mon - Fri 9.30am - 3.30pm

Sat 10am - 2pm

17 The Hopmarket WR1 1DL

T: 01905 20554 E: [info@hopmarket-trophies.co.uk](mailto:info@hopmarket-trophies.co.uk)

[www.hopmarket-trophies.co.uk](http://www.hopmarket-trophies.co.uk)



# Knowles Sports

Open: Mon - Sat 9am - 5.30pm

19 Broad Street WR1 3NF T: 01905 22683

E: [sports@knowlesofworcester.co.uk](mailto:sports@knowlesofworcester.co.uk) [www.knowlesofworcester.co.uk](http://www.knowlesofworcester.co.uk)

## A fifth generation family sports shop established in 1884

Knowles Sports offers an extensive range of sports equipment, footwear, clothing and accessories, and also provides such services as running gait analysis, shirt printing and racquet re-stringing.

Established in 1884, we are a family business currently in its 5th generation, and pride ourselves on our exceptional customer service and product knowledge.

From rugby and running gear to swimming, squash and snooker equipment, and from badminton and cricket to netball, hockey and football, we cater for all the sports with

top quality brands and accessories, and offer a full range of ski wear for sale and hire.

Whatever your sports requirements, call in and see us for exceptional choice, along with friendly, professional advice and assistance. And visit Knowles Travelgoods, also on Broad Street, for an extensive selection of luggage, handbags, leather goods and accessories.

**Visit Knowles Travelgoods, Worcester's leading leather and travel goods specialist.**





# Knowles Travelgoods

50 Broad Street WR1 3LR

T: 01905 22019 E: knowlestravelgoods@outlook.com www.bagsandaccessories.co.uk



## Worcester's leading leather and travel goods specialist

Visit Knowles Travelgoods for a wide selection of quality handbags, luggage, small leather goods and accessories by all the leading manufacturers.

Whether you require a suitcase, hand luggage, holdall, backpack or laptop case, and whether you're looking for a handbag,

evening bag, briefcase, purse, wallet or conference folder, you'll find an extensive choice displayed over two floors.

Brands include Samsonite, Antler, The Bridge, Gianni Conti, Sirco, David Jones, Visconti and many more, all available on our website.

We have been trading since 1884 and are still a family run business, currently in its fifth generation. We pride ourselves on providing the highest levels of quality along with friendly personal service, and you'll find our experienced, friendly team always on hand to offer advice and assistance.



### Open:

Mon - Sat 9am - 5.30pm

Visit our sister shop,  
Knowles Sports,  
for a wide selection of  
sports requirements,  
clothing and accessories.



# Skellerns Motorcycles

## Yamaha specialists

Skellerns Motorcycles has been around since the 1960s when John Skellern first established the business. In 1986, the business moved to its current location and in 2001 became a solus Yamaha dealer.

Today, as a premiere exclusive dealership, we offer the latest range of Yamaha motorcycles, scooters, mopeds, sports, supersports, adventure sports and custom bikes, along with a selection of used bikes and scooters and a full range of motorcycle helmets, clothing and boots. If required, PCP and HP finance is available subject to status.

Our technical department offers MOTs, servicing and repairs at competitive rates for all Japanese motorcycles, and as Yamaha specialists, all our technicians are factory trained and our sales staff are knowledgeable and highly experienced.

Whether you require Yamaha sales, servicing or repairs, you'll find everything you need at Skellerns Motorcycles. For further information, please see our website.

52 Sidbury WR1 2HZ  
T: 01905 20580  
E: [sales@skellerns.co.uk](mailto:sales@skellerns.co.uk)  
[www.skellerns.co.uk](http://www.skellerns.co.uk)

### Open:

**Tue - Sat** 9am - 5.30pm  
closed Sun & Mon



# Vida Worcester Luggage

Suitcases, handbags, rucksacks, purses and more...

We offer an extensive range of suitcases and bags to suit all needs and for all situations, including luggage, handbags, purses, wallets, scarves, rucksacks and holdalls. We also stock around a hundred different fragrances for men and women.

Pop in and have a browse. Customers can expect a warm, friendly welcome, unrivalled service and well-informed advice on all your travel needs.

We generally re-stock weekly, so any special requirements we can't meet immediately can usually be addressed within seven days.



**Follow us on facebook  
for details of new products and  
special offers!**

 [VidaWorcesterLuggage](https://www.facebook.com/VidaWorcesterLuggage)

1 The Gallery, The Shambles WR1 2RD

**Open Mon - Sat 10am - 5pm**



# Worcester Cycle Centre



Worcester Cycle Centre is an independent bicycle dealer trading since 1998. We stock a wide variety of high quality brands such as Trek, Cannondale, Lapierre, Specialized and Santa Cruz. These are superbly complemented by parts and accessories manufactured by Mavic, Bointrager, Fox, GoPro, Lezyna, and Endura to name but a few.

Whether you are new to cycling or an elite racer we extend a warm welcome to visit our store. Our experienced team are happy to help and believe buying a bike should be done the old fashioned way. Visit the shop, touch, try and personalise the bike. This is the only way to ensure you have the correct bike fitted properly and it is suitable for your needs.

Don't just believe us, here are a few things our customers have said:

**Always happy to oblige, repairs done quickly 100% satisfaction, best in Worcester.**

**Really nice female friendly bike shop.**

**Very professional, go that extra mile to help and advise. All staff are very passionate about all things bike.**


## Open:


Mon - Wed & Fri 9.30am - 5.30pm

Thurs 9.30am - 6.30pm Sat 9am - 5.30pm

8 - 9 College Street WRI 2LU

T: 01905 611123

 Worcester.cycle.centre

 @worcestercyclecentre



## From original paintings to arts & crafts

Arts & crafts are very well catered for in Worcester. Whether you're searching for a wonderful piece of original art to adorn your walls, a limited edition print by a local artist or a unique handmade gift, Worcester offers a number of fabulous galleries offering a stunning choice, with bespoke framing also provided. Likewise, if your hobby is quilting, dressmaking, sewing or knitting, Worcester's specialist shops offer everything you could possibly need, with help, advice and tuition readily on hand.



# Brimstone Gallery & Gifts

## An Aladdin's cave of gifts, jewellery and artwork

Tucked away from the hustle and bustle of the High Street, in the historic Reindeer Court, visitors will find Brimstone Gallery and Gifts.

An Aladdin's cave of gift ideas, jewellery and stunning artwork, Brimstone offers a wide range of handmade gifts, ranging from Jellycat soft toys, Shabby Chic,

East of India gifts, Garrie Elspeth jewellery and Fairtrade gifts.

The naturally lit gallery features a large collection of stunning and exclusive artwork from independent artists such as Yvonne Coomber, Simon Clarke, Gillian McDonald and Wendy Edwards, and there's also

a bespoke, while-u-wait framing service.

Owners Frank & Wendy Edwards will happily make up jewellery to order, to match an outfit or create something special, using the shop's large collection of beads, and also provide a jewellery repair and re-thread service.



*Call in, relax and take time to browse...*

20 Reindeer Court, Mealcheapen Street WR1 2DS

T: 01905 616662 E: [ebrimstone@aol.com](mailto:ebrimstone@aol.com)

[www.brimstoneshop.com](http://www.brimstoneshop.com) [brimstonegalleryandgifts](https://www.facebook.com/brimstonegalleryandgifts) [@brimstoneshop](https://twitter.com/brimstoneshop)

Google search as Brimstone Gallery and have a peek inside





## Creative Hands 2

### The sewing machine specialists

As a family-run independent business, operating since 1970, we supply a wide range of domestic sewing machines and overlockers from a variety of manufacturers. We also service and repair all makes and models, and our work is fully guaranteed.

Customers can enjoy a hands on experience before deciding on their machine purchase and we always provide a comprehensive backup service to give peace of mind and ensure customers gain the most from their new machine.

In addition, we stock a huge range of haberdashery, ribbons, trims, patchwork, quilting and craft items, and over 800 fabrics to choose from.

Ask about our wide range of workshops, covering everything from applique to zips, from a variety of tutors. The beginners' class is ideal for novices wanting to kick-start their sewing journey.



**Largest stockist of sewing machines in Worcestershire**

**The only Husqvarna dealer in the region**

7 College Street WR1 2LU T: 01905 24940  
[www.creativehands2.co.uk](http://www.creativehands2.co.uk)  [creativehands2Worcester](https://www.facebook.com/creativehands2Worcester)



# The Frame Warehouse

7 Trinity Street WR1 2PW

T: 01905 612525

E: calvin@theframewarehouse.co.uk

🐦 @framesworcester

## Picture frames, mounts, framing and more...

The Frame Warehouse is a family run business that is constantly evolving to meet the needs of customers and currently offers three shops in one.

**The Frame Warehouse** offers a picture framing service, with a range of ready made and custom designed picture frames, mounts and mirrors, as well as a selection of artwork and giftware. New for 2014, we are stockists of Bookishly and Green & Co prints.

**The Cabin** offers watch batteries, straps and repairs, and is an official stockist of Casio watches.

**Trophies Direct** offers a selection of trophies, medals and awards, with an in-house engraving and key-cutting service.

Customers can expect to find a huge variety of products and services offering real value for money, alongside friendly, helpful personal service.



**Open: Mon - Sat 9am - 5pm**





20 The Hopmarket WR1 1DL

T: 01905 20723

E: [enquiries@hopmarketwools.co.uk](mailto:enquiries@hopmarketwools.co.uk)

## The knitting specialists...

We love all things knitting and offer a wide range of hand-knitting yarns, knitting patterns, knitting books and knitting needles, along with buttons, crochet products and knitting sundries.

We're a family run company, with many years experience, which means we're always on hand to offer friendly, knowledgeable help and advice.

Pop in and take a look, we're always happy to talk about knitting!



# Hopmarket Wools

**Open:**

**Mon - Wed, Fri & Sat**

9.30am - 5pm

**Thur** 10am - 5pm



# Rags

## Dressmaking fabrics, haberdashery and patterns

With the upsurge in dressmaking and sewing, Rags has never been busier. Call in and choose from an extensive selection of dressmaking fabrics, ranging from basic cloth to modern prints and textures.

All staff are experienced sewing bees and happy to offer friendly help and advice.

Fabrics are constantly changing, so you'll always find something new, and we also stock a selection of sewing patterns and haberdashery.

We look forward to seeing you at Worcester's only dressmaking fabric shop, established for over 25 years.



19 Chapel Walk, CrownGate Shopping Centre WR1 3LD T: 01905 612330

**Open: Mon - Sat** 9am - 5.30pm



# The Cotton Reel

42 Broad Street WR1 3LR

T: 01905 25938

[www.thecottonreel.co.uk](http://www.thecottonreel.co.uk)

## All things patchwork

We specialise in patchwork and quilting, and offer a wide range of fabrics, notions, wadding, threads and haberdashery, with fabric available in lengths from the bolt, fat quarters or packs of charm squares.

Our haberdashery includes a large selection of unusual ribbons, buttons, glass beads and sequins, and we also offer an expanding selection of our own patchwork and applique patterns, including bags, hangings, quilts and seasonal items.

We're happy to help with free advice and technical knowledge – just pop in and ask!



New for 2014 Hire our Sweet Sixteen longarm quilting machine and make your quilt with ease!

## Quilting Workshops

We run our own workshops teaching all aspects of patchwork and quilting. Our popular bag-making class runs once a month, and our block of the month programme now runs twice a month. Lots of other classes also available. All you need is a good sense of humour and cake eating skills.



Open: Tue - Sat 10am - 4.30pm



# The Kings Gallery

## & Mangojuice Gallery

### Stunning artwork and bespoke framing

Fabulous collection of original and limited edition art across two floors.

Bespoke picture framing service from a Fine Art Trade Guild recommended framer, with the experience and knowledge to advise on the best frames for your pictures.

10 New Street WR1 2N  
T: 01905 611196



**Open:**  
Mon, Tue, Wed, Fri & Sat  
10am - 5pm





# The Paintbox

## A unique range of art, vintage and retro collectables


We offer a wealth of art and collectables to suit all tastes, and pride ourselves on sourcing the most unique and interesting pieces to provide our customers with something original and genuine.

If you're looking for something different, call in and take a look.

We have a wide and eclectic range of prints, motorsport related items, memorabilia, vintage, retro and hand-crafted products. We also offer a picture framing service and mounts cut to size.

We also publish our own greetings cards and prints!



4 Mealcheapen Street WR1 2DH T: 01905 619944 E: [paintbox@lineone.net](mailto:paintbox@lineone.net)  
[www.paintboxgallery.com](http://www.paintboxgallery.com)  Paintbox Gallery



Gifts, House & Home

### Beautiful pieces and exquisite ideas

If you're looking for a special gift, stylish homeware or stunning items for around the house, you'll be spoilt for choice in Worcester. From elegant and refined to retro and quirky, from branded and bespoke to up-cycled and vintage, you'll find furniture, carpets, home furnishings, cookware, lighting and bedding to suit every taste, whether contemporary or traditional, with pets and gardens well catered for too.





Amoré

**LOVE our exclusive gifts and clothing...**



When we opened Amoré in May 2013, we wanted to offer Worcester's shoppers something truly different, and that is what we have achieved. Take a look in Amoré and you'll find gifts, cards, silk flowers, cuddly toys, handbags, accessories and clothes you simply won't find anywhere else!

Check out our exclusive ranges of Luella and Braintree clothing, all exclusive to Amoré, beautifully displayed in our upstairs clothes section.

We have cards and gifts to suit all ages and all occasions, and can gift-wrap if you wish.

**Friendly, personal service and no queuing!**

**Open: Mon - Sat 9.30am - 5.30pm**  
**Sun 11am - 4pm**



*New clothing section upstairs!*

7 Pump Street WR1 2QX

T: 01905 726159

E: bekyel@hotmail.co.uk

f Facebook.com/Amoré Worcester



COOK  
SHOP

# Cookmate

## For all your cookware needs...


Cookmate started in 1981 and over the years owner Caroline Gregory has built up a successful business offering an extensive selection of tableware, bakeware, cake decorating, cutlery, cookware, professional knives, small electrical including KitchenAid, Dualit, Magimix and more.

Whatever your kitchen requirements, well trained staff are on hand to advise on your individual cooking needs!

**Our themed cooking demos are becoming very popular, covering such themes as Best of British, Mediterranean cookery and Easy Christmas Entertaining. Tickets include demo, glass of wine and bespoke offers on the evening. 6.30 - 8.30pm. Ask in store for details.**

**Coming soon:  
upstairs cooking  
demo area.**

62 Broad Street  
WR1 3LY  
T: 01905 27251



**Open:**  
Mon - Sat 9am - 5.30pm  
Sun 11am - 4pm



# County Furnishings



## A complete soft furnishing service for your home

We are the largest independent retailer of carpets, curtains & accessories in Worcestershire offering a great selection of carpets, rugs, hard flooring, fabrics, curtains, blinds, wallpapers and beds.

Visit our large showroom to see thousands of carpet and fabric samples. We keep a huge range of carpet rolls and room-sized remnants in stock, along with rugs, beds, literally hundreds of furnishing fabric rolls and accessories, poles, tracks and blinds.

Our brands include Brintons, Amtico, Sanderson, Harlequin, Luxaflex, Hynpos and Myers.





Visitors can expect a warm welcome and the highest standards of service from our long-serving team of professionally trained staff. And we provide free parking!

Whatever your soft furnishing requirements, we offer a complete service, from initial consultation to fitting. We'll visit your home to measure and quote for carpets, curtains and blinds. Our team of carpet fitters is highly recommended, and we also provide a professional curtain and blind making & fitting service.

We hold a regular coffee morning every Wednesday, so why not come along and enjoy a cup of tea or coffee while browsing through our showroom?

Austin House, Castle Street WR1 3AD  
T: 01905 29121

E: [enquiries@countyfurnishings.co.uk](mailto:enquiries@countyfurnishings.co.uk)  
[www.countyfurnishings.co.uk](http://www.countyfurnishings.co.uk)

 county-furnishings  
 worcesterfabric

**Open: Mon 9.30am - 5.30pm**  
**Tue - Sat 9am - 5.30pm**



# Flowers of Worcester

Open: Mon - Sat 8.30am - 5.30pm

## Say it with flowers...

Flowers of Worcester carries on a family tradition of supplying fresh, long-lasting flowers at an affordable price and prides itself on providing Worcester's largest fresh cut flower display.

The shop is owned by Alan Prince, who has over 28 years experience in the business and has been supplying flowers to Worcestershire customers for more than 17 years. As well as the public, this includes Worcester Cathedral, Heart of Worcestershire College, local restaurants and pubs, Worcester theatre presentations and University of Worcester graduation ceremonies.

Flowers arrive from Holland three times a week and are kept in a climatically controlled storage facility to ensure they remain fresh.

Whether you require fresh cut flowers, wedding flowers, funeral tributes, gift bouquets, floral contracts or bespoke flowers, you can rely on Flowers of Worcester to provide the highest quality blooms, with same day delivery available throughout the Midlands.

*We pride ourselves on supplying freshly cut flowers that last and last.*

C1 Chapel Walk  
CrownGate  
WR1 3LD

T: 01905 619009

E: [aprinceflowers@hotmail.co.uk](mailto:aprinceflowers@hotmail.co.uk)

[www.flowersofworcester.co.uk](http://www.flowersofworcester.co.uk)





# Hallowood Furniture



**Open: Mon - Sat 9.30am - 5.30pm Sun 11am - 4pm**

25-26 The Shambles WR1 2RA

T: 01905 20981 E: worcester@hallowood.co.uk www.hallowood.co.uk

## Beautiful real oak furniture

Choose from a wide selection of beautiful real oak furniture, designed to enhance your living room, dining room, hallway, office, bedroom or bathroom.

All furniture is handmade from premium grade wood, with expertly crafted dovetailed joints and durable finishes, ensuring it will look good and last for years to come, and as we buy in bulk, we are able to keep our costs low and pass on incredible savings to you.

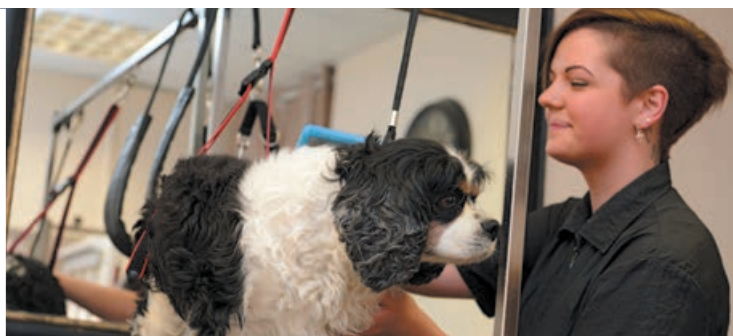
Due to high demand, over 95% of our furniture is kept in stock ready for prompt delivery, and we provide free delivery on all items over £200 to most UK mainland addresses.

So, why not join us for a cup of coffee, take a look at our showroom and discuss your needs in a relaxed atmosphere?



**Spend over £1500 and  
receive up to 10% discount\***

\*Terms & Conditions apply



# House of Dogs

**Canine boutique with a difference**

## Open:

**Mon** 12pm - 5.30pm

**Tue - Sat** 9.30am - 5.30pm

**Pampered canines can expect exclusive treatments when they visit House of Dogs, offering professional and modern grooming, tailor made treatments, canine clothing and delicious wholesome doggy treats.**

"We understand the importance of maintaining your canine's coat, skin and hygiene and offer a full range of treatments, including a full health check, cleansers, comb-thru, bath, blow dry, paw and nail regime, coat cut and style. A selection of these are also available individually to suit your dog's needs," explains owner Stuart Wilson-Dejour.

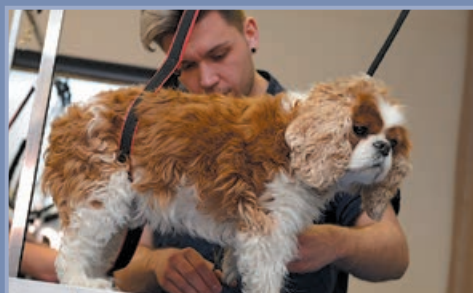
"We use only natural Aloe Vera shampoo and conditioning treatments, and our Hydro-bath enables us to massage muscle tissue whilst gently bathing and achieving a deep clean."

"We also offer hand-baked oat-based treats, using natural ingredients, crafted to please the most particular palette," he continues, "along with a selection of garments from local designers and seamstresses, or bespoke to ensure a perfect fit."

Why not pop along and give your canine companion the attention they deserve? Or take advantage of gift cards to spend within the boutique or treatment room?

30 New Street WR1 2DP T: 01905 731645

E: [info@houseofdogs.org.uk](mailto:info@houseofdogs.org.uk) [www.houseofdogs.org.uk](http://www.houseofdogs.org.uk)





# Insitu Furniture



## Contemporary furniture for modern day living

Insitu is a unique, family owned shop, established in 1985, that offers those extra special qualities not normally found when shopping for furniture and accessories.

The shop on Friar Street offers a wide range of contemporary furniture, from ergonomic seating to sculptural statement pieces, all displayed over three floors. This includes seating and recliners, cabinets and storage, dining tables, giftware, lighting, mirrors, rugs, and accessories.

We pride ourselves on offering high quality furniture sourced from across the world and over the years have developed a close working relationship with major brands such as Stressless and Varier from Norway, Ligne Roset from France, Fama from Spain, Rom from Belgium, Collins and Hayes from the UK, in addition to other high quality European suppliers.



We welcome you to the most interesting range of furniture in the area and our small team of experienced sales people will always be available to lend a hand when selecting exactly the right item for your home.

We have updated our systems to enable furniture to be visualised in your choice of covering materials as well as size, enabling specification to your exact requirements. Just ask in store.

**“Experience, coupled with my knowledge of designing and creating furniture enables me to select the very best products for my customers.”**

Owner, Jonathan Macmillan

35 Friar Street WR1 2NA  
T: 01905 613515 E: [info@insitufurniture.co.uk](mailto:info@insitufurniture.co.uk)  
[www.insitufurniture.co.uk](http://www.insitufurniture.co.uk)

**Open:**  
**Mon - Sat** 9.30am - 5.30pm  
**Sun** 11am - 3pm



# Monkee Business

13 Reindeer Court WR1 2DS

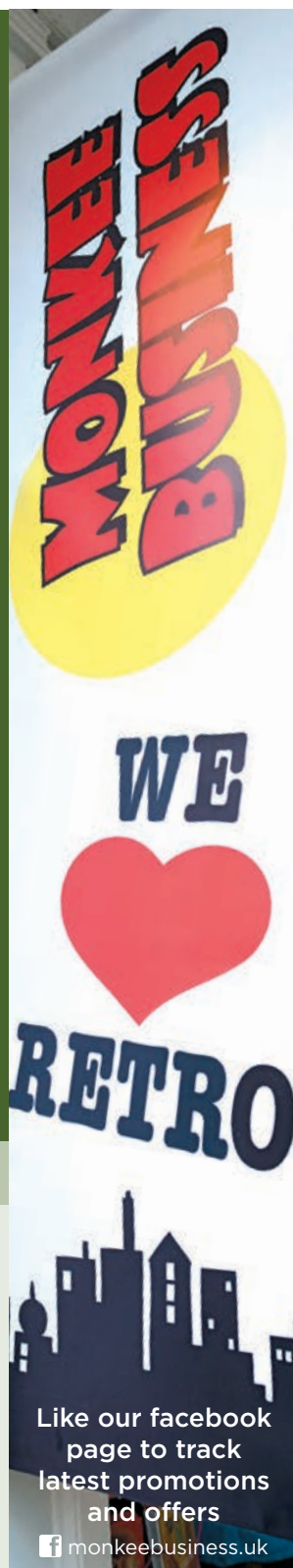
T: 01905 611383 E: [monkeebusiness1@googlemail.com](mailto:monkeebusiness1@googlemail.com)

**Open:** Mon - Fri 10am - 5pm Sat 9.30am - 5.30pm

## Retro, quirky and comic gifts

Choose from a wide and varied range of retro, quirky and comic gifts, including nostalgic gifts from the 80s, current products from Marvel, DC comics and Moomins... cards, gift wrapping, collectables, super hero clothing, accessories and more...

- The only independent retailer selling licensed VW products
- Some items exclusive to Worcester
- 10% discount on production of NUS or BID card (excluding sale items)





## The bright lights of Worcester

# J & E Nevitt

Nevitt's is a family-owned company that first started trading back in 1970, when the shop was located in Blackfriars Square. With over 45 years' experience in decorative lighting, Nevitt's specialise in top quality lighting offering real value for money, and can provide expert help and advice.

Unusual, interesting lighting is sourced from France, Spain, Germany, Sweden and across the globe, and many of the traditional lights are made from double lacquered solid cast brass.

Ranges include uplights, wall lights, handmade shades, rise and fall pendants, crystal chandeliers, bathroom lighting, table lamps, floor standing lamps, Tiffany lighting, flush ceiling lighting, desk lamps, recessed and spot lighting, outdoor lights and non-electrical pendants. A selection of mirrors and occasional furniture is also on display.

Nevitt's stock a vast array of replacement lamps, tubes and bulbs, and also offer a full repair service from their workshop, ranging from replacing a lampholder to re-wiring a light fitting or fitting a longer cable.

### Open:

**Mon - Sat** 9.00am - 5.30pm

48 Broad Street WR1 3LR

T: 01905 29889

E: [info@nevittlighting.co.uk](mailto:info@nevittlighting.co.uk)

[www.nevittlighting.co.uk](http://www.nevittlighting.co.uk)



# New England Country Store



## From vintage to Cath Kidston...

New England Country Store offers a delightful range of gifts and homeware, in country and vintage styles, aimed at adults, children and babies.

Gifts are suitable for all occasions and include Steiff bears, Yankee candles, Pip studio and many other well-known brands.

As Worcester's only Cath Kidston stockist, we offer a wide range of products, from jewellery, handbags and childrenswear to bedding, china and kitchen products.

Whatever your requirement, our friendly knowledgeable staff will help you find the perfect gift, priced to suit your budget.

---

### Open:

Mon - Sat 9am - 5.30pm  
Sun 11am - 4pm

---

51 Broad Street WR1 3LR  
T: 01905 723463





# Sunbeams

## Worcester's only Christian bookshop

Sunbeams has been trading for over 7 years and is Worcester's only Christian bookshop, selling a range of bibles, Christian books and cards for all occasions, along with CDs, DVDs, jewellery, crafts and graduation frames.

We offer a warm, caring welcome, with the offer of prayer if you ask. Come and visit our lovely bright shop promoting the name of Jesus.



**Open: Mon - Sat 10am - 4.30pm**

19 The Hopmarket WR3 7JL

T: 01905 739486 E: [rmgrath@live.co.uk](mailto:rmgrath@live.co.uk)

[www.sunbeamschristianshop.co.uk](http://www.sunbeamschristianshop.co.uk)



Stunning, gorgeous and unique

# SWAN Luxury Gifts & Interiors

There's nothing like entering a shop and seeing an accessory, gift or piece of jewellery that is a must have! SWAN offers a product selection that is beautiful, stunning, unique and classic, while CYGNETS offers a gorgeous collection of miniature treasures for children, including adorable jewellery for girls that and makes the perfect present or keepsake.

SWAN Luxury Gifts & Interiors was founded in 2014 by Susan Trimby-Bishopp. She says: "My aspirations are supported by a solid vision and a relentless passion for great style and creativity. I strive to maintain a leadership position in the gift and home interiors, not only by offering the best products but ensuring that they are luxurious and affordable."

SWAN is located at 17 Friar Street, Worcester, home to Worcester's most exclusive shopping boutiques and lined with historic and timber frame buildings, including Greyfriars House & Gardens.



17 Friar Street WR1 2NA

T: 01905 739332

E: [contact@swan-giftsandinteriors.com](mailto:contact@swan-giftsandinteriors.com)

[www.swan-giftsandinteriors.com](http://www.swan-giftsandinteriors.com)

 SWAN Luxury Gifts & Interiors

 @SwanWorcester





Something old meets  
something new

## Tallulah Blue



Here at Tallulah Blue you'll find a combination of contemporary home furnishings with a retro twist. A mix of eclectic styles to suit any modern or traditional home.

We sell a wide range of quirky gifts, home accessories, candles, clocks, signs, bath products and more.



We also provide a bespoke lampshade and cushion making service. either choose one of our ready made designs or bring in your own fabric and we'll design a lampshade or cushion uniquely for you.

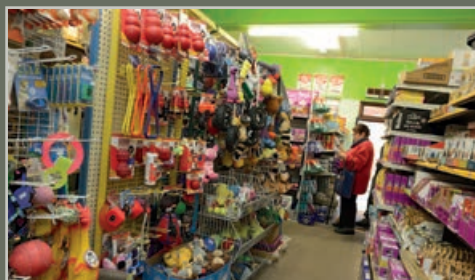


Come in and have a browse, there's plenty to see and we're always happy to offer advice and styling tips for your home, or you could try our home styling service.

**Open: Mon - Sat 9.30am - 5pm**

C20 Chapel Walk,  
CrownGate Shopping Centre WR1 3LD  
T: 01905 22961 [www.tallulahblueltd.com](http://www.tallulahblueltd.com)  
[f](#) tallulahblueltd

# Trinity Pets and Garden Supplies



## Open:

Mon 9am - 5pm

Tue - Sat 9am - 5.30pm



## Pet supplies, garden products and fishing tackle

We are the only shop selling pet supplies, garden products and fishing tackle in the city centre.

Customers calling in can expect to find professional, friendly service, along with everything you could need for your pets, whether cats, dogs, rabbits, guinea pigs, hamsters or otherwise; lots of garden products and seeds; and a fishing tackle shop on the lower level.

We are happy to deliver food and products to your door, for orders over £20.

If you can't find what you need, we are happy to order it for you.

2 - 4 Trinity Street WR1 2PN

T: 01905 25909



# Worcester Furniture Exhibition Centre

**Open: Mon - Sat 9am - 5pm**

**Famous brand furniture**

The site of Worcester Furniture Exhibition Centre has been synonymous with quality furniture for more than 120 years and we have been established in this Grade II listed building since 1972.

We pride ourselves on our high levels of personal service and large selection of furniture for every room in the house, displayed over three floors.

Our many famous brands include Ercol, Parker Knoll, G Plan Upholstery, Skovby, Tempur, Relyon, Hypnos Beds, Nathan Sutcliffe, Old Charm and many more, to suit both contemporary and traditional tastes.

We have many promotions running throughout the year, offering keen bargains and best prices on top brands, and we carry over 1,000 items in stock, ready for immediate delivery.

Call in and talk to our experienced staff for help and advice on the right product selection for your home.

**Free delivery in Worcestershire.**

ercol

CUMULY

G PLAN  
UPHOLSTERY

TEMPUR  
MATTRESSES AND PILLOWS

HYPNOS  
THE NEW COMFORTABLE BED IN YOUR HOUSE

ParkerKnoll



6-9 Cornmarket WR1 2DR T: 01905 23653 E: [contactus@worcesterfurniture.co.uk](mailto:contactus@worcesterfurniture.co.uk)  
[www.worcesterfurniture.co.uk](http://www.worcesterfurniture.co.uk)

Caroline Gregory  
Owner  
Cookmate  
62 Broad Street WR1 3LY



Q. What is your favourite place for lunch in Worcester?

A. Mac and Jac's in New Street. This is great for a healthy lunch. The food is fresh and the menu changes seasonally. The staff are attentive and offer a warm welcome and the surroundings are pleasant.

Q. What are the advantages of working in the Worcester BID area?

A. Worcester is a fantastic city to work in, and the Worcester BID is very supportive and pro-active. Fellow shop-owners and employees talk and work together to create a safer city and enhance the shopping or dining experiences for visitors to the city.

Q. Do you have a top tip for visitors to Worcester?

A. Parking is very reasonable: the city car

parks often offer discounted rates at certain times of the year. The city is a pleasant environment to walk around and offers lots of choice for eating both at lunch time and in the evening. A walk around the city, trip to the Cathedral and a walk along the river offers variety for all the family.

Q. What is your favourite independent business in the Worcester BID area?

A. For cards and unusual gifts I would frequent Cornucopia or New England: very different gift shops but both equally good. If I were looking for something new to wear I would head to Friar Street and pop into 25 Boutique or Emporio. For toys or children's gifts, Toys & Games of Worcester or Wise Owl Toys are well worth a visit.



## Gadgets, gismos, computers and technology

Most homes and businesses these days revolve around technology, whether audio, games, cameras or computers, which is why it's good to know Worcester has its very own Sony and Apple specialists close at hand. And when it comes to home and garden electricals, you'll find a massive choice, ranging from cookers and washing machines to lawn mowers and hedge trimmers.





# AT Computers

## Which iPad or Mac are you?

As an Apple reseller, we live and breathe Apple and we can help you choose which Mac, iPad or iPod is right for you. We'll provide impartial advice on any aspect of your purchase and offer Apple-certified training on many aspects of the Mac platform.

Call in to test drive the latest Mac or iPad and see demonstrations of the latest Mac products, and find out about regular training

sessions and events based around the latest technology. We also offer expert advice if you're a business or professional user wanting to do more with your mac, along with repairs, leasing and finance options.

With over 20 years experience, you'll find us professional and knowledgeable, with friendly staff who are experts in software, training and repairs. Check out our range of accessories, speakers and cases.

## Friendly, knowledgeable staff with happy faces



57 Broad Street  
WR1 3LY

T: 01905 617832

E: [worcestersales@atcomputers.co.uk](mailto:worcestersales@atcomputers.co.uk)

[www.atcomputers.co.uk](http://www.atcomputers.co.uk)

 AT Computers  @atcomputersapr

**Open:**

Mon - Sat 9.30am - 5.30pm



# Sony Centre

(Hutchinsons Hifi and Vision Limited)

## Discover Sony clarity and vision

Hutchinsons Hifi and Vision Ltd is Worcester's only 'Sony Only' store and the largest Sony Centre in the Midlands, offering the very latest Sony TVs, Hifi, cameras, tablets, portable audio, Play Station 4 and much more.

Free 5-year Sony UK warranty on TVs purchased, plus expert advice from Sony Academy qualified staff on wall installation, TV fixing and ancillary services.



**See the incredible new X9 4K Ultra HD 3D TV, official 4K TV of the 2014 FIFA World Cup – bringing real stadium atmosphere into your home!**



43-5 The Shambles WR1 2RE

T: 01905 613218 E: [worcester@sonycentres.co.uk](mailto:worcester@sonycentres.co.uk)

[www.sony.co.uk](http://www.sony.co.uk)  WorcesterSonyCentre

# Thompsons Discount Electrical

## Extensive choice of electrical goods

Call in to our City Arcade shop for an extensive selection of household electricals, including fridge-freezers, washing machines, cookers, dishwashers and tumble-driers.

We offer a wide range of small kitchen appliances such as kettles, toasters, irons, mixers, microwaves and blenders, and a great choice of garden machinery, including petrol and electric lawnmowers, chainsaws, strimmers and hedge cutters. And don't forget to check out the electric bike - no MOT, licence or tax required.

You'll find our discounted products beat stores such as Curry's, Argos and Homebase, and we offer fast delivery and free take back of old appliance, or simply take away from the shop floor.

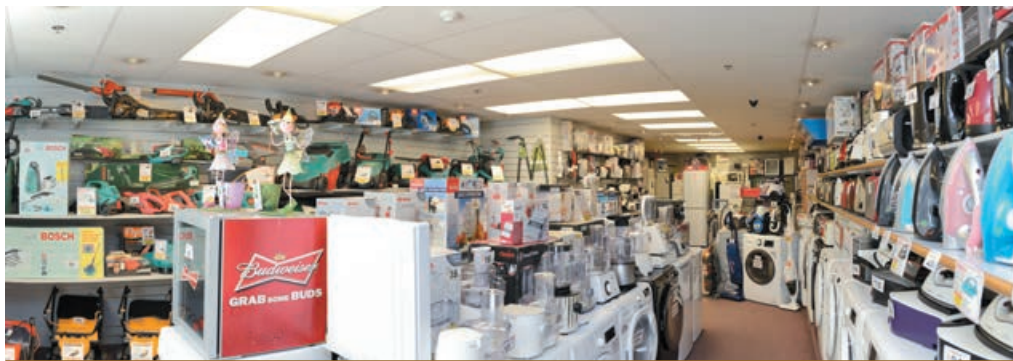
With new models arriving every day, along with clearance and end-of-line products, it's always worth popping in.

**Open: Mon - Sat 9am - 5.30pm**  
**Sun 10am - 4pm**

City Arcade, The Shambles WR1 2QJ  
T: 01905 21154  
E: [sales@thompsons-online.co.uk](mailto:sales@thompsons-online.co.uk)  
[www.thompsons-online.co.uk](http://www.thompsons-online.co.uk)







# Thompsons Discount Electrical

**Open: Mon - Sat 9am - 5.30pm**

## Household electrical goods at discounted prices

We have been selling a wide range of household electrical goods for over 30 years and offer such items as fridge-freezers, washing machines, cookers, dishwashers and tumble-driers.

We also have small kitchen appliances such as kettles, toasters, irons, mixers, microwaves and blenders, along with a wide range of garden machinery, including petrol and electric lawnmowers, chainsaws, strimmers and hedge cutters. Another unusual product is an electric bike that needs no licence, no tax, no MOT and no insurance!

Our discounted products beat the larger stores, such as Curry's, Argos and Homebase, and we offer fast delivery and free take back of old appliance, or simply take away from the shop floor. New models arriving all the time, plus clearance and end-of-line products, so it's always worth popping in.



Friary Walk, CrownGate WR1 3LE

T: 01905 29814

E: [sales@thompsons-online.co.uk](mailto:sales@thompsons-online.co.uk)

[www.thompsons-online.co.uk](http://www.thompsons-online.co.uk)

Jason Smith  
Director  
Ventutec Web Development Agency  
Independence House  
Queen Street WRL 2PL

**Q. Do you have a top tip for visitors to Worcester?**

A. My top tip is to head straight for the Tourist Information Centre at the Guildhall to get lots of ideas and inspiration for places to see and visit. Whilst the shopping is often the main draw for visitors, there is so much more to Worcester city centre and the surrounding area. It's worth taking a look at their web site at [www.visitworcestershireshire.org](http://www.visitworcestershireshire.org)

**Q. What is the top choice for a business / client meeting?**

A. At the start of the 2014 cricket season, we started a 6-year sponsorship deal with Worcestershire County Cricket Club. As the club's official digital partners, we introduced a brand new website for both the Cricket Club and the new facilities at New Road. Part of the deal enables us to use the corporate area for business meetings and events. We particularly like to take clients along and hold a business meeting whilst a match is on, and we have had some great feedback on this.

Many local businesses have seats at the cricket club and we've found it a fantastic

place to meet and engage with new and existing clients.

**Q. Where would you recommend going to celebrate a client win or positive business news?**

A. We like to head to Bolero Bar and Kitchen in Foregate Street to celebrate business and staff successes as the venue is perfect for celebratory drinks or an informal dinner. The team at Bolero is also keen to work with us to create the perfect atmosphere or setting whether I am entertaining a client or my whole team.

**Q. What are the advantages of working in the Worcester BID area?**

A. As a business owner in Worcester for a number of years, I have seen improvements thanks to the introduction of Worcester BID. The schemes and events are both varied and useful to businesses in general, and the rangers are a real asset. The business to business trading and advertising opportunities are a great way to learn about other Worcester businesses, so that where possible we can aim to keep things local.



## Alive and kicking

Music, arts, parties, events... whether you're looking for arts workshops, music gigs, visual arts, musical instruments, indie records or even party costume hire, Worcester's speciality shops and venues offer an exceptional choice, along with expertise, advice and tuition if you need it. From vinyl to Hallowe'en costumes, and from ukuleles to pottery classes, Worcester is alive and kicking when it comes to entertainment and leisure.

**BOB DYLAN**



**VOICES OF A GENERATION**

2LP GATEFOLD SET ON 180G VINYL

MONO & STEREO COLLECTOR'S EDITION  
**MILES**



## Music 47

### From orchestral instruments to rock 'n' roll...

Established for more than 25 years, Music 47 is a leading specialist in guitars, woodwind, ukuleles, violins, trumpets, sheet music, accessories and repairs.

Whatever you require, from a starter guitar to a professional amp, we have a huge range of instruments and a wide selection of equipment on display, including amplifiers, effects pedals, microphones, leading pro-audio and studio equipment.

Our friendly knowledgeable staff are always on hand to help and we pride ourselves on providing the highest standards of personal service.

#### Open:

Mon - Sat 9.30am - 5.30pm

31-33 Sidbury WR1 2HT

T: 01905 22958 E: [sales@music47.co.uk](mailto:sales@music47.co.uk)

[www.music47.co.uk](http://www.music47.co.uk)

 music47  @music\_47





# Rise



## A passion for music...

Rise maintains the spirit of a classic indie record shop, with knowledgeable, friendly staff and an extensive range of music, including a selection of vinyl that is unrivalled in the local area.

We have a deep passion for music and our music-loving customers, and our staff pride themselves on their knowledge of everything we stock.

Call in and view our extensive range of music on vinyl and CD, along with DVDs, books, vintage fashion and gifts.

We have strong links with the local music community – see our facebook page for details of events coming up.



C15B Chapel Walk,  
CrownGate Shopping Centre  
WR1 3LD

T: 01905 611273

E: [worcester@rise-music.co.uk](mailto:worcester@rise-music.co.uk)  
[www.rise-music.co.uk](http://www.rise-music.co.uk)

[rise.worcester](https://www.facebook.com/rise.worcester) [@riseworcester](https://twitter.com/@riseworcester)

**Great choice of vinyl | Regular events**

# The Ultimate Party Shop

Say 'Uniquely Yours' for a 10% discount!

Open: Mon - Sat 9am - 5.30pm



## From Super Heroes to Hallowe'en...

We are Worcester's only costume hire shop, with a huge range of children's and adult's fancy dress costumes to hire or buy for all ages, shapes and sizes.

Lots of ideas, including costumes for Hallowe'en, World War II, super heroes, movie stars, animals and more, plus wigs, masks, seasonal products, flags, makeup and accessories.

Our team thrive on a challenge and want you to leave with a smile on your face, excited about the costume you've chosen. Lots of ideas on how to make your party sparkle!


- Great ideas for hen and stag parties
- Celebrity masks
- Professional balloon decorations for any occasion with local delivery service
- Personalised banners and sashes made to order
- Buy early for Hallowe'en and Christmas

4-6 Angel Place WR1 3QS

T: 01905 745140

E: [sales@ultimatepartyshop.com](mailto:sales@ultimatepartyshop.com)

[www.ultimatepartyshop.com](http://www.ultimatepartyshop.com)

 The Ultimate Party Shop

 @ultimatepartyuk







# Worcester Arts Workshop

## Worcester's exciting contemporary arts venue

Worcester Arts Workshop is the city's contemporary art venue, embracing visual arts, crafts, ceramics, music, theatre, dance, film, literature, with a great eating and meeting place at its heart.

Situated in a lovely old brick warehouse in the city centre, WAW has been going since the 1970s and has been adapted and extended over the years by waves of artists and artisans.

Today, it has classrooms, a theatre, pottery and kiln room, and gallery space, with an evolving programme of workshop, classes, productions, films, live music events and exhibitions.

The centre is a registered charity run by a board of trustees and team of volunteers. Artists and tutors lead the classes, with opportunities for everyone to engage in the arts, including the elderly and those with special needs.

You are warmly welcomed to our licenced **Café Bliss**, set beside its own sunny courtyard, and serving a menu of Latin-Caribbean snacks and meals using freshly prepared, wholesome ingredients.

Great value classes and workshops for children and teenagers: after school, weekends and holidays.



**Open most days 10am - 5pm,**  
plus occasional live music on  
Sundays in the summer, and other  
times depending on events.

21 Sansome Street WR1 1UH  
T: 01905 25053

E: [info@worcesterartsworkshop.org.uk](mailto:info@worcesterartsworkshop.org.uk)  
[www.worcesterartsworkshop.org.uk](http://www.worcesterartsworkshop.org.uk)

 Worcester Arts Workshop

 @TheArtsWorkshop

## Restaurants, Cafés & Takeaways

### Take a break from shopping...

Take a well-earned break from shopping and enjoy a freshly blended coffee at one of the city's many stylish coffee shops or cafés. With so many to choose from, Worcester is a coffee-lover's paradise! You'll also find freshly prepared, locally sourced homemade food served at the many independent cafés, delis, pubs and restaurants across the city, along with a mouth-watering selection of cakes and pastries for afternoon tea. Or why not stay into the evening and enjoy a relaxing meal? When it comes to dining out, you're more than spoilt for choice in Worcester.





# Bindles Bar & Brasserie



## Enjoy evening cocktails or weekend brunch at Bindles

Customers can be sure of a warm welcome, great food and a plentiful supply of drink when visiting Bindles Bar & Brasserie.

Innovative local food and over 30 cocktails, along with bottled and draught lagers and beers and fine wines, makes Bindles a complete night-out experience.

Every Friday night from 5pm, Bindles Cocktail Club offers bottles of prosecco for £15 and two-for-one cocktails.

Or Saturday and Sunday, why not take advantage of weekend brunch, endless coffee, free Wifi and papers?



### Open:

Mon - Fri from 11am

Sat & Sun from 10am

55 Sidbury WR1 2HU T: 01905 611120

E: [info@bindles.co.uk](mailto:info@bindles.co.uk) [www.bindles.co.uk](http://www.bindles.co.uk)

Bindles-Brasserie

@BindlesBar

# Bolero Bar and Kitchen

*A London-style venue with unrivalled choice*



## Open:

Mon 11am - 3pm Tue - Thurs 11am - late

Fri - Sat 11am - late

Bank Holiday Sunday 10am - late



Bolero Bar and Kitchen is London-style destination perfect for a business lunch, after-work drink or cocktail, or dinner with friends.

We are a daytime and evening premium venue with two bars, top-of-the-range interior décor and an outdoor area, serving high quality casual dining and an unrivalled choice of drinks, ranging from specially selected beers, wines and champagnes to cocktails and cognacs, in a relaxed atmosphere.

By day, take your pick from a wide range of sandwiches, paninins, pastas, salads, coffee, teas, pastries and cakes. In the evening, choose from light bites, main meals and sharing plates. All dishes are freshly prepared to order and, where possible, produce is sourced from local, independent suppliers.

**Extended bar and glass area available for private hire – ideal for events and parties!**

34 Foregate Street WR1 1EE

T: 01905 22220

E: [bar@bolerovenues.com](mailto:bar@bolerovenues.com)

[www.bolerovenues.com](http://www.bolerovenues.com)

 [boleroabarandkitchen](https://www.facebook.com/boleroabarandkitchen)



# Boston Tea Party



A happening café in a landmark building – with a plane!



More than just a café, BTP is a great place to relax in a homely environment!

**Open:**

Mon - Sat 7.30am - 6pm

Sun 9am - 6pm

The Boston Tea Party is one of the West Country's best known and most popular independent café chains. Our mission is to serve well-prepared food and drinks made from ethically sourced, affordable, healthy, great ingredients every day.

More than just food, we want to get back to the social hub traditions of the UK café become rooted in the communities in which we work by supporting local artists, charities and organisations.

Which means you can look forward to a warm welcome to our beautiful café, along with a great selection of breakfasts, mains and sweet treats, plus coffees, loose teas and smoothies.

And – our menu just got bigger and better! New BTP classics include 'chorizo hash', 'house salad' and 'courgette fritter', but it's our burgers that have had the real make-over, homemade from free-range meat and served on brioche buns from the award-winning Hobbs House Bakery.

18 Broad Street WR1 3NF

T: 01905 26742

E: [worcester@bostonteatparty.co.uk](mailto:worcester@bostonteatparty.co.uk)

[www.bostonteatparty.co.uk](http://www.bostonteatparty.co.uk)

 BTPCafes

 @BTPCafes

# Caffe Bolero

**Handcrafted coffee, fresh food  
and relaxed atmosphere...**



At Caffe Bolero, our freshly prepared food is made to order and where possible is locally produced. We offer a huge choice of coffees, teas and soft drinks, as well as wine and beers.

Established in 2005, Caffe Bolero is one of Worcester's busiest coffee shops. Perfect for breakfast, cappuccino and a cake, lunch or takeaway coffee, seven days a week, with indoor and outdoor seating. Choose from our delicious sandwiches, paninis, salads and pasta dishes.

A selection of pastries, muffins, biscuits, cakes and confectionary is available at the counter. Just ask one of our friendly baristas for help!

We serve beautifully handcrafted coffee using a Segafredo blend. Segafredo Zanetti is now the leading Espresso producer in Italy and throughout the world, with more than 70,000 clients and 50 million cups of espresso drunk each day. Our customers can't get enough of our blend and we can't get enough of our customers!

2 – 4 St Nicholas Street  
WR1 1UW  
T: 01905 24548

E: [info@caffebolero.co.uk](mailto:info@caffebolero.co.uk)  
[www.caffebolero.co.uk](http://www.caffebolero.co.uk)  
E: [caffe@bolerovenues.com](mailto:caffe@bolerovenues.com)  
[www.bolerovenues.com](http://www.bolerovenues.com)

 CaffeBolero

*Bolero Venues  
were created  
from a passion  
to offer great  
coffee, premium  
drinks, simple  
high quality  
food and  
excellent  
service, in a  
relaxed  
atmosphere.*

*"The food,  
ambience and  
service are  
excellent in this  
lovely place.  
I always look  
forward to  
eating here.*



# Chesters Restaurant & Bar

51 New Street WR1 2DL

T: 01905 611638 E: [enquiries@chestersrestaurant.co.uk](mailto:enquiries@chestersrestaurant.co.uk)

[www.chestersrestaurant.co.uk](http://www.chestersrestaurant.co.uk)

[f](https://www.facebook.com/chesters.restaurant.worcester) [chesters.restaurant.worcester](https://www.facebook.com/chesters.restaurant.worcester) [@chestersmexican](https://twitter.com/chestersmexican)



Here at Chesters, we specialise in modern and traditional Mexican cuisine, along with our trademark specialty vegetarian and vegan food, with a wide range of seafood, steak, burgers, chicken and pork dishes to suit all tastes.

With over 40 different world beers, why not just drop a beer and a snack in the bar, or enjoy an evening meal in the main restaurant where we offer a unique dining experience, with freshly prepared homemade food, a relaxed and friendly atmosphere and welcoming, knowledgeable staff.

Situated on two levels, including our atmospheric cellar restaurant, Chesters is the perfect venue for a romantic candle-lit meal for two and up to a group party of 20 people.

With an extensive food and drinks menu, including some of the most varied vegetarian and vegan options to be found, we are passionate about providing good quality and service, and will ensure you have a memorable occasion.



## Mexican, vegetarian and vegan cuisine



**Don't miss Nacho Wednesday  
5pm - 10.30pm**

**Open: Mon & Tue 11am - 10pm**

**Wed & Thur 11am - 10.30pm**

**Fri & Sat 11am - 11pm**

**Sun closed (except Bank Holidays)**

# Chung Ying Garden

*Highly recommended.  
The food and service was excellent.*

## Cantonese and Vietnamese food at its best

Chung Ying Garden is a family-run restaurant, with 30 years' experience, offering a wide selection of delicious, authentic Cantonese and Vietnamese dishes, all freshly prepared.

If you're looking for truly delicious, mouth-watering food, with fantastic service and real value-for-money prices, you have to try Chung Ying Garden.

**Takeaway service  
also available**

**Special lunch menu available  
Friday and Saturday**



**Open: Sun - Thurs 5pm - 11.30pm Fri & Sat 12 noon - 2pm, 5pm - midnight Tue closed**

*Fantastic  
cuisine.*



*Perfect  
every time.*



*If you want  
something that  
isn't on the  
menu, they'll go  
out of their way  
to provide it.*



50 Friar Street WR1 2NA T: 01905 22972

 chunginggardenworchester



# Clockwatchers

**Fresh food prepared daily**

**Open: Mon - Fri 8.30am - 4pm Sat 8.30am - 5pm**

20 Mealcheapen Street WR1 2DQ  
T: 01905 611662



Daily hand-carved hot roast... fresh ingredients... and a choice of homemade soups prepared daily... just three reasons for visiting Clockwatchers, owned by Worcester's sandwich supremo Steve Wainwright.

Clockwatchers provides friendly, personal service, with sandwiches and jacket potatoes made to order, and a huge variety of fillings. You can always rely on Clockwatchers' staff for a cheery greeting, recommendations for the dishes on offer and help in choosing food if you need it. Plus, our sandwiches are made right in front of your eyes!

Lunchtime food delivered to businesses in and around Worcester; catering provided for outside events, such as christening parties, birthdays or funeral gatherings.



**"Take a look at the roast meat on display in our window every day - you can see what you're getting!"**



**GOFFEE  
DOUGH**

## **Watch the world go by at Coffee Dough**

This petite, perfectly formed new café bar serves its own custom blend of espresso-based coffees along with cakes, pastries, salads, smoothies and paninis in a picture perfect environment.

Inspired by the café bars of Milan, Coffee Dough (CoDo for short) prides itself on its rich custom-blend of coffee beans, and was founded by three Worcester coffee lovers aiming to bring the unrivalled smooth taste and luxury of Milanese café bars to UK coffee lovers.

All hot drinks are Fairtrade and produce is sourced locally where possible, with sandwiches and paninis freshly made on site daily.

Served in a stylish, relaxed, friendly environment, with free wi-fi, relaxing music and a 10% back CODO loyalty card, every visit to Coffee Dough is an experience.

**ORDER IT.  
ADMIRE IT.  
DRINK IT.  
TELL THE  
WORLD  
ABOUT IT.**



28 Chapel Walk, CrownGate Shopping Centre WR1 3LD  
T: 01905 612371 E: [barista@coffeedough.co.uk](mailto:barista@coffeedough.co.uk) [www.coffeedough.co.uk](http://www.coffeedough.co.uk)

 CoffeeDough  @codo\_worc



# Coffee Warehouse

**Coffee with character at Worcester's trendy new café**

Coffee Warehouse is recognised as one of the leading cafés in Worcester for its high standards of coffee, food, service and décor.

Our extensive menu includes continental breakfasts, lunches and the finest teas and coffee, plus a delicious selection of handmade cakes, gateaux and patisseries.

A lot of work goes into our coffee before it even reaches our customers. We work with an independent coffee roaster in London, which buys its beans directly from farmers in South America. Working closely with our suppliers, we ensure all the stages of production meet fairtrade standards, and we use one of the best machines in the world to ensure our coffee is handcrafted to perfection.

Pop in and try our coffee.  
We guarantee you'll be back for more!



**Don't miss out on  
our monthly offers!  
From free cookies  
to 10% discount!**

*With every new  
coffee comes the  
opportunity to  
experiment, learn  
and expand one's  
coffee knowledge.*

*Coffee Warehouse  
is here to share  
coffee knowledge  
with customers.*



**Open:**

**Mon - Sat 9.30am - 7pm**

12 The Foregate WR1 3QD

E: [info@coffeewarehouse.co](mailto:info@coffeewarehouse.co)

[www.coffeewarehouse.co](http://www.coffeewarehouse.co)

 [coffeewarehouse](https://www.facebook.com/coffeewarehouse)  [@cwhco](https://twitter.com/cwhco)



# Colston Bakeries & Café Deco

15 Broad Street 2a Angel Place WR1 3LH  
T: 01905 28222 E: [info@colstonbakeries.co.uk](mailto:info@colstonbakeries.co.uk)



## Experience family baking at its best and enjoy a unique Art Deco café experience

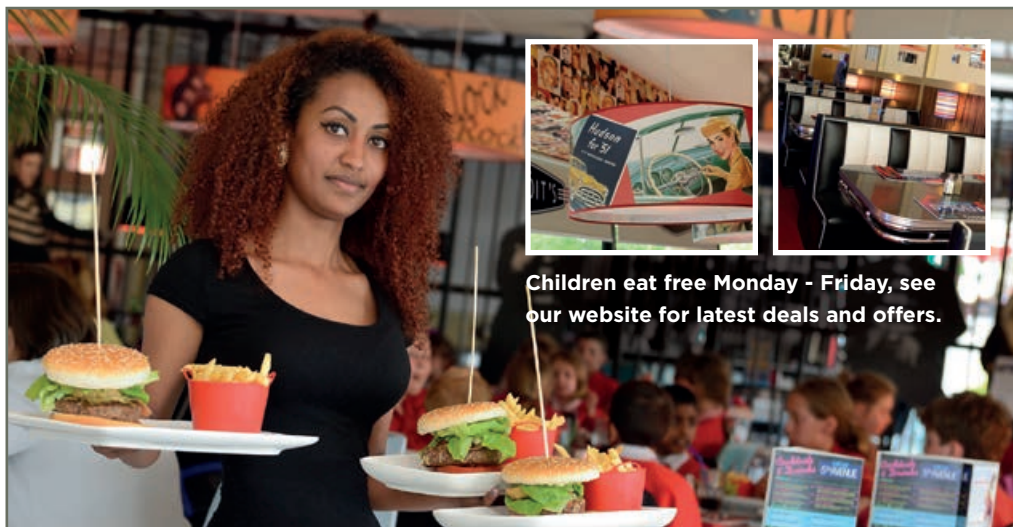
Fourth generation family bakers, carrying on a tradition that began in the 1920s and specialising in traditional bread, rolls, buns, fancy cakes, savouries, filled rolls, birthday cakes and handmade chocolates. Everything is home made by our highly skilled staff, assuring you of good, fresh food and friendly service.

Visit our Art Deco café, 'Café Deco', set on two floors of a recently renovated 1930s classic Art Deco building and serving a fabulous selection of coffee, tea, breakfasts, cakes, pastries and hot food.

### Open:

Mon - Sat 8am - 6pm Sun 10am - 4pm





Children eat free Monday - Friday, see our website for latest deals and offers.

# Detroit's

## 1950s style diner...

Welcome to Detroit's, a beautifully decorated 1950s style diner, serving delicious home-prepared burgers, steaks, pastas, chicken dishes and fresh salads.

A great venue for dining if you're seeing a show at the Swan Theatre. Open all week, from 10am till late, we offer great service from attentive, friendly staff.

Parties are welcome to dine at our raised party table on our beautifully landscaped terrace. Available for hire on selected nights for fundraising by charities or other organisations.



Jaguar House, Castle Street WR1 3AD  
T: 01905 619047 E: [detroitso@live.co.uk](mailto:detroitso@live.co.uk)  
[www.detroitso.uk.com](http://www.detroitso.uk.com)

Detroitso





**Open: Mon - Sat 9.30am - 5pm**

# Elgars Coffee Shop & Licensed Restaurant

## Discover a relaxing haven...

Tucked away from the hustle and bustle, in the heart of Reindeer Court is Elgars Coffee Shop and Licensed Restaurant, providing a relaxed dining experience either inside or out the historic 16<sup>th</sup> century building, with friendly waitress service and 5\* hygiene rating.

Owners Mustafa and Sarah have made the coffee shop their own since 2001, with many personal touches such as traditional Turkish carpets on the walls, along with signed aviation paintings from World War II.

The menu offers an extensive range of hot and cold baguettes, paninis, gourmet sandwiches, salads, light lunches, traditional cream teas, cakes, beverages and much more at affordable prices. All cakes, patés, quiches and more are made with locally sourced produce and handmade on our premises.

Elgars is available for private functions and hosts Turkish nights with Ottoman style cuisine and traditional entertainment including a belly dancer. See our website for full details.

16 Reindeer Court WR1 2DS  
T: 01905 726977

[www.elgarscoffeeshop.co.uk](http://www.elgarscoffeeshop.co.uk)  
[musty@elgarscoffeeshop.co.uk](mailto:musty@elgarscoffeeshop.co.uk)



Imagine having a choice of Indian, Chinese, Mexican, Thai, Caribbean, Spanish and Italian cuisine... with live cooking stations serving freshly prepared food... and a choice of pasta, pizza, wok, clay oven, flames grill, dim sum and more...

Thanks to the newly opened World Buffet Restaurant, serving your favourite dishes from around the world, all this is available, along with a fantastic choice of desserts, chocolate fountain, selection of breads and salads – giving new meaning to the word ‘value’.

Simply wander around and plan your food journey. You can go back as many times as you want! Start at the salad bar, move on to starters, then choose from the freshly prepared fish, beef, lamb or chicken main dishes. Fancy a kebab, noodle stir-fry or grilled fish? Simply tell the chef how you want your dish cooked, spicy or mild, medium or rare. And make sure you leave room for the dessert!

A new family favourite, with friendly staff and lovely décor, and now open seven days a week, check out Family Sunday Roast or Saturday Mexican theme! Remember, you can eat as much as you like!

# Flames World Buffet

19 Foregate WR1 3QF

T: 01905 617797

E: [info@flamesworldbuffet.co.uk](mailto:info@flamesworldbuffet.co.uk)

[www.flamesworldbuffet.co.uk](http://www.flamesworldbuffet.co.uk)

 [flamesworldbuffet](https://www.facebook.com/flamesworldbuffet)



**Don't forget  
to book your  
Christmas parties  
& office parties  
from 6 - 60  
people. Christmas  
offers & deals will  
be available.**



# Ginger Pig Café & Bistro

**Everything home-made  
- even the ginger nuts!**



Owner Steven Knight started up The Ginger Pig in December 2013, wanting to introduce something different to High Street branded cafés and restaurants, and visitors to the café and bistro will certainly find something new.

"Customers can expect to find fresh, homemade dishes, friendly staff and great atmosphere. We're open for breakfast and lunch, and on the last Friday of each month for evening meals. We also host regular music nights from local artists.

"We are completely independent, using only free range, locally sourced products. "Everything is homemade, even the little ginger nuts you get with your Fairtrade tea or coffee."



**£1 takeaway hot  
drinks available  
all day, every day!**



9 Copenhagen Street WR1 2HB

T: 01905 338913

E: [info@littlegingerpig.co.uk](mailto:info@littlegingerpig.co.uk)

 Ginger Pig Café Bar & Bistro

 @GingerPigCafe



Everyone is welcome,  
call in, take a look and  
find out for yourself  
why we're different!

**Open: Mon - Fri 9am - 4pm Sat 8.30am - 5pm Sun 10am - 4pm**



104 High Street WR1 2HW

[www.house-of-coffee.co.uk](http://www.house-of-coffee.co.uk)  House of Coffee Worcester  House of Coffee



# House of Coffee

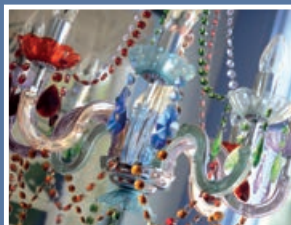
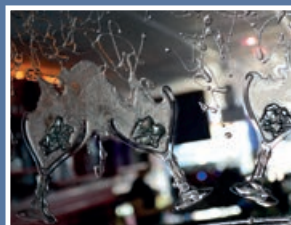
## Unique, family-run, gourmet coffee shop

If you enjoy coffee, you have to try House of Coffee, with its amazing selection of artisan coffee, single-origin coffees rotating every week, and weekly specials including 'Cascara'.

We also have premium teas and chai, luxury hot chocolates, homemade iced tea and lemonade, smoothies, milkshakes, and licenced drinks, plus a great selection of homemade cakes and a great value all-day food menu.

Customers can expect a bright, welcoming environment and top service, with every drink perfectly made and presented.

**Open: 7 days a week 8am - 5.30pm**





# Mason's Olive & Bean

## Homemade sandwiches, lunchtime treats and deli food

Locally sourced food, freshly made on the premises, served in an attractive setting by friendly, smiley staff – that's what you can look forward to at Mason's Olive & Bean.

Pop in and try our lunchtime treats, deli boards and very special children's food. We offer homemade sandwiches, light bites, paninis, baked potatoes with fillings, sausage rolls and cakes. And our latte art has to be seen!

### Gluten free cakes, rolls and soup

We have gluten free cakes and sell gluten free bread rolls, and our home-made soup is also gluten and dairy free.

We're happy to provide lunch deliveries to local business and provide outside catering to a growing list of local companies.

*Latte art  
training this  
morning!  
Really pleased  
with the result.  
Coffee anyone?*

- Open seven days a week for breakfast, lunch and afternoon tea
- Free wi-fi
- Takeaway sandwiches and coffee
- Private meeting room available



4 - 6 Pump Street WR1 2QT

T: 01905 331010

E: [bmason@prohandlingsolutions.co.uk](mailto:bmason@prohandlingsolutions.co.uk)

[www.masonsoliveandbean.co.uk](http://www.masonsoliveandbean.co.uk)

[masonsoliveandbean](https://www.facebook.com/masonsoliveandbean)

[@masonolive](https://twitter.com/masonolive)





Artisan coffee, live music and laid back atmosphere...



MY Coffee is an independent artisan-style coffee house, hosted by fully trained Baristas, serving a special blend of coffee created on a wood fired roaster along with looseleaf teas, cakes, porridge, soup, paninis, flatbreads, cookies, shortbread, soft drinks, wines, beers and cider...

Come and experience our warm, friendly atmosphere, comfortable sofas, and a secret courtyard. Our staff can't wait to answer any questions you may have about their number one passion... Coffee!

Don't miss fortnightly live 'unplugged' acoustic nights, along with quizzes and Barista training evenings...

**Dedicated to making your daily coffee experience unforgettable!**

**Open:**

**Mon - Sat 7.30am - 6.30pm**

**Sun 8.30am - 5.30pm**

29 The Cross WR1 3PZ

T: 01905 863126

[www.mycoffeeandco.co.uk](http://www.mycoffeeandco.co.uk)

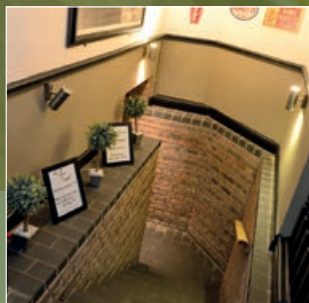
mycoffeeandco

@MyCoffeeWorcest



# The Olive Branch

**Open: Mon 11am - 3pm Tue - Sat 11am - 10.30pm (Bar open till late)**  
**Closed Sundays - Open Bank Holiday Sundays**



## Mediterranean bistro and wine bar

The Olive Branch offers a dining environment with a classic mix of stylish and contemporary, set within one of Worcester's most historic landmark buildings.

Split across three floors, the ground floor and first floor serve as a dining area, whilst the cellar has been transformed into a magnificent coffee lounge and bar area, with low brick ceilings creating an intimate and relaxing area, perfect for a pre or post dinner drink or cocktail.

Outside, a delightful courtyard enables you to enjoy a bite to eat, a coffee, or a few cocktails, relaxing in the sunshine.

For top class Mediterranean dining with home-cooked freshness, right in the heart of Worcester, The Olive Branch provides the perfect choice.

### Special offers: weekdays 12pm - 7pm:

- **5 tapas for £20**
- **Sharing board and 2 large glasses of wine £20**

*the Olive Branch*

6 Church Street WR2 1RH T: 01905 616669

E: [info@olivebranchworcester.co.uk](mailto:info@olivebranchworcester.co.uk) [www.olivebranchworcester.co.uk](http://www.olivebranchworcester.co.uk)





# Quinn's Coffee House

15/16 Friary Walk, CrownGate WR1 3LE T: 01905 616923

## Savour the aroma of freshly ground coffee...

Quinn's Coffee House is a well-established café, trading for over 18 years, serving freshly ground coffee and wonderful fresh food.

Customers will find a lovely clean café, a warm welcome and great fast service.

Try our freshly cooked breakfast, homemade lunchtime specials or homemade ice-cream,

all made by people who care. Lunch is served from 11.45am daily, no need to book unless you're a larger party.

Order a takeaway coffee and we'll give you a large for the price of a small!

**Two course lunch just £10.99**

**Open: Mon - Sat 8.30am - 5pm**





*We believe it's the little details that make the difference.*



### Cheapest take-out coffee in Worcester

We are a family-orientated, indie café with a passion for creating an unforgettable experience for everyone. We offer a friendly, relaxed atmosphere, serving coffee, tea and loose tea, along with a wide range of freshly prepared food, including daily specials, soups, pastas, paninis, sandwiches and cakes.

Our coffee is one of the best on the market, so why not come and try it for yourself? Or why not try a full English breakfast, egg Benedict or egg royal?

Big, outdoor, dog-friendly courtyard and free wifi. Call in and see us!



## Papa's Caffe

6 - 8 New Street WR1 2DN

T: 01905 617783 E: [info@papascaffe.com](mailto:info@papascaffe.com) [www.papascaffe.com](http://www.papascaffe.com)

[f](#) papascaffe [t](#) @papascaffe

#### Open:

Mon - Sat 9am - 6pm

Sun 9am - 5pm

Bank Holidays 9am - 5pm

(Kitchen closes one hour before closing time)







# Puccini's

## A taste of Italy

Puccini's is a lively, family-owned Italian restaurant located on cobbled Friar Street, established since 2002 and dedicated to providing excellent food and service.

Our authentic Italian cuisine includes rustic hand-stretched pizzas, fresh traditional pastas and risottos, and Italian wines, plus, a large selection of gluten-free, vegetarian and vegan options.

All dishes are prepared to order, featuring locally sourced ingredients, served with a smile in a cosy environment offering great atmosphere.

Come to Puccini's to experience all things Italian: a good coffee, a lazy lunch, an intimate dinner or a gathering. Families and groups welcome.

12 Friar Street WR1 2LZ T: 01905 27770  
E: [puccinisrestaurantworchester@gmail.com](mailto:puccinisrestaurantworchester@gmail.com)  
[www.puccinisrestaurant.co.uk](http://www.puccinisrestaurant.co.uk)

 Puccini's  @PuccinisUK

### Open:

**Tue - Thurs** 12pm - 2.30pm, 5.30pm - 10pm,  
**Fri** 12pm - 2.30pm, 5.30pm - 10.30pm  
**Sat** 12pm - 10.30pm  
**Sun** 12pm - 4pm (lunch)





**Light lunch menu**

**Fixed price menu  
lunchtime and  
early evening**

**A la carte and  
daily specials  
lunch and evening**



**Laid back and rustic,  
with great food**

Saffrons Bistro was started in 1995 by owners Nick & Chrissy Hunt who wanted to give Worcester a different dining experience. No pretension, just good, honest, local food delivered in a laid-back, relaxed and informal atmosphere.

Which means at Saffrons you can expect delicious, tasty food with that home-cooked feel, including game, fish, seafood, steaks, cassoulets, risottos and salads, and we'll always make an effort for those with specific allergies.

You'll also find nostalgic music from the 60s, 70s and 80s, a great wine list and a bar just waiting to be discovered, with a growing selection of gins to sample.

15 New Street WR1 2DP

T: 01905 610505

E: [nick@saffronsbistro.co.uk](mailto:nick@saffronsbistro.co.uk)

[www.saffronsbistro.co.uk](http://www.saffronsbistro.co.uk)

**Open:**

**Mon - Thurs** 12pm - 2.15pm  
5.30pm - 9.30pm

**Friday** 12pm - 2.15pm  
5.30pm - 10pm

**Saturday** 12pm - 2.30pm  
5.30pm - 10.30pm



# Siam Smile Thai Restaurant

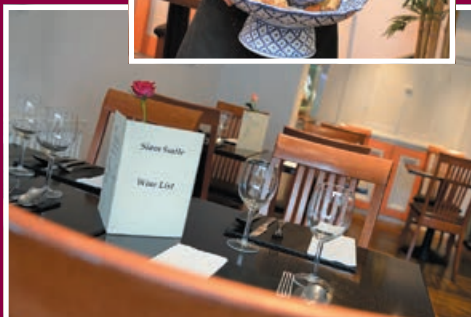
**Open:**  
Tue - Sat 6pm - 11pm



## Freshly cooked, authentic Thai dishes

Discover the culinary art of Thai and Malaysian food at Siam Smile Thai Restaurant. Authentic Thai dishes all cooked fresh, served by friendly staff. Express menu also available, offering great value for money.

For a touch of Thailand, visit Siam Smile Thai Restaurant... soups, salads, steamed and grilled specialities, curries, stir fry dishes, rice and noodles.



**Takeaway menu:  
10% discount**

27 College Street WR1 2LS  
T: 01905 611137  
E: [siam2smile@hotmail.com](mailto:siam2smile@hotmail.com)  
[www.siamsmilethai.co.uk](http://www.siamsmilethai.co.uk)  
f Siamsmile Restaurant

# The Green Room

## The perfect pre-performance venue

The Green Room is a new independent café bar and fully licensed restaurant with a relaxed, contemporary feel. Choose from a select menu of gourmet burgers, salads, taster plates and desserts, available lunchtime and evening.

Before a show at Huntington Hall or a visit to Vue Cinema, why not pop in for something to eat and drink from our Pre-Show Menu?

**We're known for our gourmet burgers . . .** Our beef comes from Shropshire, with the chuck steak freshly ground & handmade into a 6oz burger master piece! Our chicken is free range, the beans are organic, the fish is from sustainable sources and we only use the finest cuts of local lamb & pork.

The restaurant seats 200 and can be hired out for private parties and events, please ask for availability.

We look forward to seeing you soon.



### Open:

**Mon - Thurs** 9.30am - 5.30pm, **Fri & Sat** 9.30am - 12 noon,  
**Sun** 10.30am - 3.30pm or until 11pm when a theatre performance is taking place

Chapel Walk, CrownGate WRI 3LD

T: 01905 731911 E: [info@visitthegreenroom.co.uk](mailto:info@visitthegreenroom.co.uk) [www.visitthegreenroom.co.uk](http://www.visitthegreenroom.co.uk)



Victoria Hamilton-Jones  
Owner  
Bindles Bar & Brasserie  
55 Sidbury WR1 2HU

Q. What is your favourite place for lunch in Worcester?

A. My dad and I have frequented Mac and Jac's and their lunch specials are fantastic.

Q. What is the top choice for a business/client meeting?

A. If I'm meeting friends for a coffee or if a larger business group wants to meet, Coffee Dough in CrownGate is always good.

Q. What is your favourite independent business in the Worcester BID area?

A. Anja Potze. Her service is always second to none. I can just give her a call and she finds something to suit my requirements and budget.

Q. What is your favourite part of Worcester?

A. The Cathedral as it's stunningly peaceful

and I could wander around it for hours; and the Tything, as it's part of my walk to work and I love the mismatch of buildings and businesses. It's a mini microcosm of Worcester.

Q. What would you recommend as a hidden gem in Worcester for visitors to discover?

A. Greyfriars on Friar Street has the most fantastic gardens. It is so peaceful, you can wonder around and then have coffee and cake after!

Q. Do you have a top tip for visitors to Worcester?

A. It's definitely worth going for a walk. There are so many nooks and crannies in Worcester, you won't find the best places by staying on the map.

bindles.co.uk

## Pubs, Bars & Clubs

### Night time is buzzing...

Worcester's pub scene and nightlife has something for everyone. Why not unwind after a hard day's shopping and enjoy a relaxing drink? You'll find real ale, fine wines, beers, perry and cider in a choice of venues, ranging from historic pubs with a story to tell through to quirky and contemporary bars with a real vibe. If you're looking for nightlife, why not start the evening with cocktails and move on to a club? You'll find Worcester's buzzing when night time falls...







*Wine is  
our speciality,  
our forte,  
our passion.*



# Casablanca

## Fine wines & relaxed atmosphere

Casablanca is an exclusive, intimate, independently-owned wine bar in the heart of Worcester, with a warm, relaxed atmosphere, friendly knowledgeable staff and a wide range of fine wines by the glass, local beers & ales and classic cocktails.

We hold regular events, such as wine-tasting, gin and beer tasting, and cocktail-making nights. Everyone welcome. An ideal venue for meetings, private parties and events.

### Open:

Tue - Thur 4pm - 12am Fri & Sat 12pm - 1am



7 Copenhagen Street WR1 2HB.

T: 01905 745861

[www.casablancabar.co.uk](http://www.casablancabar.co.uk)

E: [enquiries@casablancabar.co.uk](mailto:enquiries@casablancabar.co.uk)

[f casablancabar](https://www.facebook.com/casablancabar) [@casablancawine](https://www.instagram.com/casablancawine)

# Farriers Arms

## Great atmosphere and a warm welcome

A friendly city centre pub with a warm, inviting atmosphere, where everyone is welcome. With 19 years under our belts, we believe we are the longest serving landlords in Worcester.

Call in for a great selection of real ales, beers, wines, spirits and soft drinks, and a great selection of home-made food served 12 - 3pm. We have a beer garden, pool, darts, jukebox, sports TV, plus live music every month and a selection of drinks promotions.

Whether you want a quiet drink or a fun night out, you'll find everyone has a smile on their face and conversation to make at one of Worcester's oldest pubs. We also offer accommodation.

Special offer: Smirnoff vodka with a selected mixer and Jager Bombs just £2!



9 Fish Street WR1 2HN

T: 01905 27569

E: farriers.arms@hotmail.com

**Open:** 7 days a week, 12 noon till late







# Horn and Trumpet

12 Angel Street WR1 3QT

T: 01905 29593  [hornandtrumpetworcester](https://www.facebook.com/hornandtrumpetworcester)

## Great atmosphere, great value food and drinks

### *Great offers*

Breakfast served from 10am: 2 sausages, 2 rashers of bacon, egg, beans, tomato & toast, just £2.90!

Selected doubles and a dash £3.24,  
Carlsberg £2.25, Bank's Bitter £2.25.

Shots from £1, double vodka/Red Bull  
£3.99, student offers

Donna and Ant extend a warm welcome to customers. If you're looking for a nice, warm atmosphere, great value food and drink and friendly staff, this is the place for you.

Old school DJ's Friday and Saturday nights, free pool Sunday nights, plus BT Sports.

#### **Open:**

**Mon - Thurs** 10am - 11.30pm

**Fri & Sat** 10am - 1.30am

**Sun** 12pm - 11pm



## World class cocktails mixed to perfection

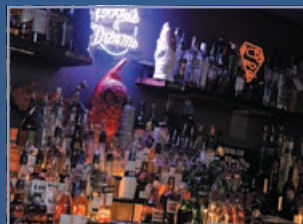
Keystones is a new cocktail bar that parties with the best of them, providing world-class cocktails, master classes, street food, entertainment and specialist party bookings.

Visit this underground destination and discover a vibrant party bar where time has no place, where you can dance on the tables while singing your favourite songs, and where the world's greatest drinks are mixed to perfection. Where better to sip a perfect martini?

Our staff are here to make your visit a great experience and one you'll never forget!

### Making a name for ourselves

Our head bartender recently won a Courvoisier Brandy Cocktail competition, Keystones was featured in Metro Newspaper last year, and our cocktail team regularly hosts private weddings and parties!



1 Copenhagen Street WR3 2HB

T: 0751 963 5489 E: JP@keystonescocktailclub.co.uk

[www.keystonescocktailclub.co.uk](http://www.keystonescocktailclub.co.uk)

Keystones Cocktail Club @Worccocktails

**Open:**

Mon - Sat 5pm - late  
Bank Holiday Sundays

**Two for one cocktails every day 5pm - 8pm**





# Mode Sports Bar & Grill Worcester

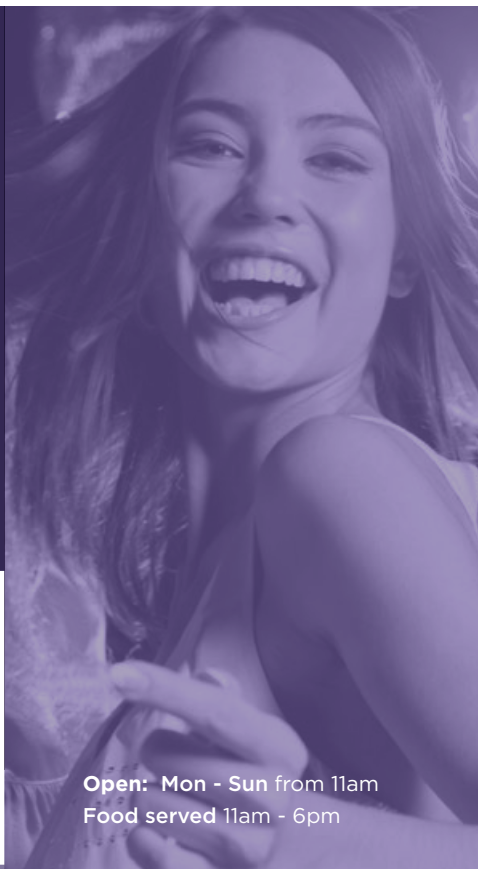
Angel Row WR1 3QN T: 01905 28010 [www.modeworcester.com](http://www.modeworcester.com)   modeworcester

## An oasis in the heart of the city!

Whether you're looking for fantastic food, carveries, live sport or a beautiful courtyard garden to relax in, Mode is the place to be all year round.

Our grill menu of freshly prepared gourmet burgers, healthy salads, delicious pizza, garden BBQs and indulgent desserts have been rated as 'excellent' by our customers.

**Mode... refreshingly different**



**Open: Mon - Sun from 11am**  
Food served 11am - 6pm

# The Cardinal's Hat



## Open:

Mon 4pm - 11pm

Tue - Thurs 12pm - 11pm

Fri & Sat 12pm - 11.30pm

Sun 12pm - 10.30pm



The Cardinal's Hat is Worcester's oldest pub and originally dates back to the 14th century. A sensitive restoration in 2013 returned it to a traditional English alehouse, retaining a wonderful sense of its unique heritage.

A stone's throw from the Cathedral, The Cardinal's Hat was one of numerous ecclesiastical inns originally established to accommodate the many pilgrims and travellers visiting Worcester in the Middle Ages.

Today, this historic watering hole is a hub of local artisan food, cask ales, craft lager, continental beer, fine wines and live music. With its imposing Georgian three storey red brick façade and stunning location on Friar Street, it offers a traditional pub atmosphere, with many heritage features.

Nigel, Sadie and the team extend a warm welcome, whether you are popping in for a quick coffee, enjoying a leisurely platter of the regions finest fare or supping a long cool pint of locally brewed ales such as Pope's Worcester Gold.

31 Friar Street WR1 2NA

T: 01905 724006

E: [info@the-cardinals-hat.co.uk](mailto:info@the-cardinals-hat.co.uk)

[www.the-cardinals-hat.co.uk](http://www.the-cardinals-hat.co.uk)

 [thecardinalshat](https://www.facebook.com/thecardinalshat)  [@TheCardinalsHat](https://twitter.com/TheCardinalsHat)



*Everyone welcome!*



# The Courtyard

11 St Nicholas Street WR1 1UW

T: 01905 23050  courtyardworcester

## Open:

Mon - Thur 12pm - 1am

Fri & Sat 12pm - 2am

Sun 12pm - midnight

The Courtyard is a contemporary, stylish bar, attracting a young, vibrant crowd, with music and DJs Monday, Wednesday, Thursday, Friday and Saturday.

All major sporting events shown on Sky, BT Sports. Private parties welcome, discounted drinks always available.

**Cocktails: two for £5.50 at all times!**

*Look out  
for drinks  
promotions...*



# The Cricketers

A cosy country pub in the heart of Worcester

*Great pub, great  
beer, great food.*

*"Handy for local  
county cricket,  
race course and all  
central shops.*

*Wonderful  
atmosphere.*

*Top class ales  
and cider.*



**Open: Mon - Thurs** 11am - 11pm **Fri** 11am - 12am  
**Sat** 10am - 12am **Sun** 12pm - 10.30pm

6 Angel Street WR1 3QT

T: 01905 21395

E: [the\\_cricketers@live.co.uk](mailto:the_cricketers@live.co.uk)

[www.thecricketersworcester.co.uk](http://www.thecricketersworcester.co.uk)

 Cricketers.WR1

Stop by and see how much we've changed. After a massive refurbishment, The Cricketers has a new look, although still offers a warm and cosy atmosphere, with its traditional 'country pub in the city' feeling.

We work hard to make sure all our customers have a relaxing, enjoyable time, and offer a great selection of homemade food, real ales and ciders, including Cask Marque Real Ales, and branded drinks, along with RUK, At the Races, BT Sport and free wifi.

We offer selected discounts to all cricket members, CAMRA members and Warriors fans showing a valid member card, season ticket or match day ticket.

Adrian and Alison extend a warm welcome and look forward to seeing you soon.







*An oasis of  
independence  
in a corporate  
drinking world!*

# The Hand in Glove

## Cool, ambient and quirky

The Hand in Glove is a small, candlelit bar offering cool décor, perfect music and fantastic range of spirits, cocktails and ales, with helpful, knowledgeable staff who know how to mix a cocktail.

Choose from craft beers, local ales, fine wines, over 40 types of gin, 30 types of rum, a wide range of whisky and all the classic cocktails, plus new creations on request.

If you're looking for relaxed, ambient atmosphere, funky music with a dabble of the Smiths, smiling bar staff and a good time, this is definitely the place for you.

**5 star rating on Trip Advisor**

**'Matt is known round Worcester and beyond as the cocktail master!'**

### Open:

**Mon - Thurs** 4pm - midnight

**Fri** 3pm - 1am **Sat** 12.30pm - 1am

**Sun** 12.30pm - midnight



College Street WR1 2LS

T: 01905 612154

E: [handinglove@gmail.co.uk](mailto:handinglove@gmail.co.uk)

 [hand in glove Worcester](https://www.facebook.com/handin-glove-Worcester)

# The King Charles II Pub

29 New Street WR1 2DP

T: 01905 726100 E: [info@thekingcharleshouse.com](mailto:info@thekingcharleshouse.com)

[www.thekingcharleshouse.com](http://www.thekingcharleshouse.com)

 [thekingcharlesiipub](https://www.facebook.com/thekingcharlesiipub)  [@thekingcharles2](https://twitter.com/thekingcharles2)



## Worcester's most historic pub

On 3rd September 1651, King Charles lost the Battle of Worcester to Cromwell's New Model Army. As a wanted man, with a price of £1000 on his head, he fled Worcester, from what is now called The King Charles House, to France.

Over the years, the house has had many guises, but is now restored to its traditional style and is a real ale haven with cosy, real log fires in the centre of Worcester.

Dave Craddock extends a warm welcome to Worcester's most historic pub, with ten real ale pumps serving Craddock's Ales, local cider and perry, and Pieminister's award-winning traditional pies and mash.

**Dog friendly pub.**



### Open:

Mon - Thurs 11.30am - 11pm

Fri & Sat 11.30am - 11.30pm

Sun 11.30am - 11pm



# The Pheasant

**Gourmet burgers and  
real ales our speciality!**

25 New Street WR1 2DP T: 01905 729862 E: pheasantpubworcester@gmail.com  
www.pheasantpubworcester.co.uk f pheasantpubworcester @pheasantworcester



The Pheasant is a traditional on-trend pub in the heart of Worcester serving real ales, craft and world beers, batch cocktails and gourmet burgers. We pride ourselves on providing great service in a friendly and relaxed environment, along with sourcing all our produce locally from trusted suppliers.

We show all major sporting events live on four plasmas and hold regular live music evenings, playing funk, soul, indie and rock.

## Open:

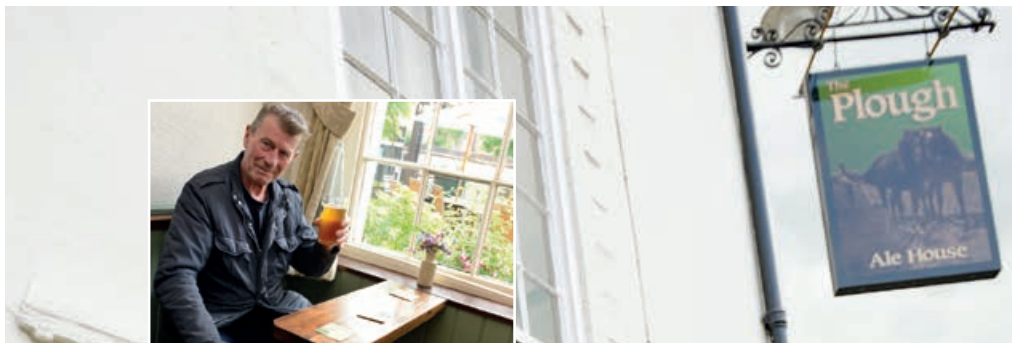
Mon - Thurs 12pm - 11pm  
Fri & Sat 11am - late  
Sun 12pm - 11pm

**Refurbished and  
relaunched May 2014!**









# The Plough

23 Fish Street WR1 2HN

T: 01905 21381

 The Plough Worcester



## Real ale and conversation...

A traditional real ale pub offering local ale, cider and perry, with no TV, games or jukebox! Dogs welcome.

We have six real ales from the three counties and West Midlands, plus local cider and perry, and a large selection of malt whiskies. Check out Barbourne Cider and Perry, Sabrina Ales and Malvern Hills Brewery.

Worcester CAMRA pub of the year 2006, 2008, 2011 and 2013!



### Open:

Mon - Thurs 12pm - 11pm

Fri & Sat 12pm - 11.30pm

Sun 12pm - 10.30pm

# The Swan with Two Nicks



**Open:** Mon - Thurs 11am - 11pm Fri & Sat 11am - 1am

**Food served:** Mon - Fri 12 noon - 3pm & 5.30pm - 8.30pm Sat & Sun from 12 noon

## A country pub in the heart of the city

A family-run free house for over 40 years, offering local beers from micro-breweries in the local counties and good, homemade pub food. We have a varied selection of real ales and ciders, as well as over 40 malt whiskies to tickle your taste buds.

The building has great history as it's been a public house since 1550!

Three venues in one: Drummonds Bar has live music, DJs and dancing until 3am Fri and Sat night, and Lunar Bar upstairs is a monochrome room selling cocktails and available for private parties Mon - Fri. Buy one get one free on selected cocktails!

Call in for a warm welcome and great atmosphere. Our pub is at the heart of the local community, with groups such as Worcester Ukulele, 42 Gothic, Meet-Up, Water Polo and Quizzes all using us as a meeting place. Plus, now we have comedy nights once a month! All events listed on facebook.

Wifi, jukebox, large patio area, baby changing and disabled facilities.

**Loyalty scheme for real ales - each time you buy a pint, we'll stamp your card and your tenth pint is FREE!**

28 New Street WR1 2DP

T: 01905 528190 E: [info@theswanwithtwonicks.co.uk](mailto:info@theswanwithtwonicks.co.uk)

[www.theswanwithtwonicks.co.uk](http://www.theswanwithtwonicks.co.uk)  the Swan with Two Nicks



# Tramps Nightclub & Velvet Nightclub

## The ultimate party destination

Let us entertain you! We provide a fun, friendly atmosphere at Mode Sports Bar & Grill, serving delicious food throughout the day to all ages, and the ultimate party destination at Tramps Nightclub (over 18s) and Velvet Nightclub (over 21s on Saturdays), with great drinks prices at all three venues.

Tramps showcases some of the best artists and DJs in contemporary music, as well as live PAs from well-known celebrities, and has a three-tiered main room that spans the dance floor. With great music, fun-filled themed nights and friendly bar and door staff, both Tramps and Velvet Nightclubs promise an experience not to be missed.

### VIP package

Book a tailored VIP package or host your own private function. Start the night with an exclusive meal at Mode, followed by entry to the VIP area at Tramps or Velvet!



### Open:

**Tramps Nightclub:**

Mon, Wed & Sat from 10.30pm

**Velvet Nightclub:**

Thurs - Sat from 10.30pm

**Mode Sports Bar & Grill:**

Mon - Sun from 11am

Angel Place WR1 3QN T: 0782 655 8750 [www.night-clubber.com](http://www.night-clubber.com)

Tramps Nightclub Worcester @Trampsworcester

### For food and drink connoisseurs ...

Speciality food and drink abounds in Worcester, thanks to the city's many independent outlets. Where else could you find specialist retailers selling the finest handmade chocolates, locally sourced quality meat, fine wines from around the world, delicatessen goodies from local producers and traditional sweets from the good old days, all within a stone's throw of each other? That's the beauty of shopping in Worcester...





# Chocolate Deli

53 New Street WR1 2DL  
T: 01905 611324  
E: [info@chocolatedeli.biz](mailto:info@chocolatedeli.biz)  
[www.chocolatedeli.uk.com](http://www.chocolatedeli.uk.com)

**Welcome to Worcester's  
only chocolatier!**



Chocolate Deli offers the finest handmade artisan chocolates, as well as premium cakes, pastries and coffee, all made from the finest quality ingredients.

With its split level design, the shop offers a relaxing, unhurried atmosphere with a European edge, providing an inviting environment in which to enjoy a cake and coffee.



As well as coffee and patisseries, Chocolate Deli is also a chocolate shop with a difference, offering a wide range of handmade chocolates and truffles, unique one-off mouldings and quirky treats.

All chocolates and mouldings are hand made on the premises, using the finest Belgian chocolate, and fillings are made to unique recipes. Cakes are hand baked, using the same high quality ingredients, and hot chocolate drinks are made with chocolate not powder. Plus, every customer is given a free taster bar with their drink!



Friendly, knowledgeable and enthusiastic staff offer a warm welcome and award-winning customer service, and are committed to meeting all your chocolate needs!

*We offer hand-wrapped  
wedding favours to  
your colour scheme  
and specification*



**Open:**

Mon - Fri 8.30am - 5.30pm

Sat 8am - 4pm

# M&M Meats



## Family butchers since 1984

M & M Meats is a traditional family butchers, established since 1984, and for the last eight years located on St Swithin's Street. The shop has a long tradition of serving Worcester customers and local businesses, and a reputation for supplying quality meat and expertise. Between them, the six full-time butchers have over 100 years' of experience.

Wherever possible, meat is sourced from local suppliers, and prepared & packaged on the premises. Traditional meats include beef, lamb, pork, free-range chicken and game, including rabbit, ostrich and venison - preordered on request.

Meat can be cut to suit individual customer requirements, and a delivery service is provided for all orders over £50, within a 10-mile radius of Worcester city centre.

M & M Meats is happy to cater for special occasions, such as birthdays, Christmas and barbeques. Either ask in store or look online for Christmas, Easter and other seasonal offers.



15 St Swithin's Street WR1 2PY

T: 01905 739297 E: [enquiries@mandmmeats.co.uk](mailto:enquiries@mandmmeats.co.uk) [www.mandmmeats.co.uk](http://www.mandmmeats.co.uk)



# Mac and Jac's



## Mouth-watering artisan food and coffee

We are an independent, family run, fully licensed café/deli, situated in historic Friar Street, Worcester.

In our shop and deli we sell a range of artisan products made by us, including mouth-watering savoury tarts, cakes and pastries, all baked in-house daily.

We also offer a range of delicious goodies from local producers, including ales, cheese and honey, as well as fine food and drink from further afield.

Upstairs, you'll find our fully licensed café, serving breakfast, lunch, cakes, over twenty different teas and our artisan coffee!

We also run popular supper evenings, with a 2 or 3-course set menu. Join our mailing list online at [www.macandjacs.co.uk](http://www.macandjacs.co.uk) to be emailed the next date and menu.

Mac and Jac's – a great place to meet, eat and visit.



44 Friar Street WR1 2NA

T: 01905 731331 [www.macandjacs.co.uk](http://www.macandjacs.co.uk)

 macandjacs

 @macandjacscfe



# Malpas Stallard

Connoisseurs of fine  
wines and spirits

Malpas Stallard is a combination of two ancient wine companies, Joseph Malpas & Company and Josiah Stallard & Sons, which originally started trading in Worcester in 1807.

Today, the family run business operates under the directorship of Nigel and Jeannie Smith, and offers a wide selection of wines, spirits, beers, minerals, vintage port, madeiras and sherries from around the world, from its Fish Street Cellars.

All are available wholesale or retail, with experienced advice given for special occasions such as weddings, anniversaries and parties on a sale-or-return basis at no extra charge.

**Free delivery throughout Worcestershire,  
or collect from our drive-in yard in  
Fish Street off Deansway**



## Open:

Mon - Fri 9.30am - 5.30pm

Sat 9.30am - 1pm

The Cellars, Fish Street WR1 2HN

T: 01905 22358 E: [malpasstallard@hotmail.co.uk](mailto:malpasstallard@hotmail.co.uk)

[www.malpasstallard.co.uk](http://www.malpasstallard.co.uk)



# Nostalgic Sweets

## Sweets to bring back memories

Nostalgic Sweets is an independent, family run company, selling happiness and memories! Call in and take a look at our huge selection of sweets – we have something to suit every taste, age and budget.

Take your pick from old fashioned, novelty, American candy, sugar-free, pic n mix sweets, chocolates, sweet gifts and more... Plus we have a Slush Machine serving Slush drinks!

We can also provide sweets to order for wedding and special occasions, please ask for details.



*Yummy, yummy,  
yummy... take  
your pick!*

**Open: Mon - Sat 9am - 5.30pm Sun 10am - 4.30pm**

C21 Chapel Walk, CrownGate WR1 3LE

T: 01905 29392 E: paul.martin@nostalgic-sweets.co.uk

 nostalgicsweets  @nostalgic\_sweet





# Papsons Continental Delicatessen

**Continental products you  
may not find elsewhere...**



Papsons is the only continental deli in the city centre, offering a wide variety of products you may not find elsewhere, including Greek, Italian, Portuguese, Spanish, Polish and Cypriot. Specialists in Mediterranean food, wines and liquors, antipasti, cheese, olives, salami, Parma ham, oils and vinegars, pasta, continental bread and panettone.

Established in Worcester for 12 years, and over 50 years in the food and catering industry, our knowledgeable and friendly staff extend a warm welcome, so please feel free to come in and browse. We have lots to see, recipes to share and much more.


**Support the independents.**

**Unrivalled customer care.**

**Quality sourced food  
and drink.**

2 Cornmarket WR1 2DJ  
T: 01905 25235



A portrait of David Leatherdale, a middle-aged man with short grey hair, wearing a white dress shirt and a dark green and grey striped tie. He is standing outdoors with a blurred background of trees and a building. The text is overlaid on the top left of the image.

David Leatherdale  
Chief Executive  
Worcestershire County Cricket Club  
The County Ground  
New Road WR2 4QQ

Q. What is the best place for an after-work drink?

A. Café Bolero. It's vibrant and busy, but a laid back place to unwind.

Q. What is your favourite place for lunch in Worcester?

A. Sitting outside The Quay by the river on a warm sunny day watching the river boats go by.

Q. What are the advantages of working in the Worcester BID area?

A. Everything is on your doorstep, with contrasting shops, old and new. Whether you want a casual lunchtime coffee or a full evening dinner, nothing is too far away.

Q. Do you have a top tip for visitors to Worcester?

A. When walking around the city make sure you look up at all the different listed buildings they

have fantastic features that are less visible at ground level.

Q. What would you recommend as a hidden gem in Worcester for visitors to discover?

A. The Ginger Pig Café in Copenhagen Street serves local food for a lunchtime snack just a short walk from the Cathedral and 30 yards from the High Street.

Q. What is your favourite part of Worcester?

A. The riverside. Whether walking, running or sitting and relaxing with a drink, the riverside is the perfect place to watch the world go by on a warm summer's day.

wccc.co.uk



## Accommodation

### Enjoy your stay...

Worcester offers all types of accommodation, from hotels and guesthouses to bed and breakfasts and self-catering, giving you a base from which you can discover the delights of the city and surrounding areas. Whether you're looking for cosy and quaint or the height of luxury, Worcester offers accommodation to suit all budgets and tastes, ensuring you make the most of your stay and come back time and again.



# Diglis House Hotel



**An idyllic location  
with riverside views**

Enjoying an idyllic setting on the River Severn, close to all tourist attractions and just a few minutes walk from the city centre, Diglis House Hotel is perfectly located. A gentle walk along the riverside takes you to Worcestershire Cricket Club or Pitchcroft Racecourse.

A country house hotel in the heart of the city, Diglis House Hotel is a beautiful Grade II listed building with 28 rooms, a restaurant, meeting rooms and riverside gardens. The Conservatory Restaurant provides Worcester's only riverside dining experience, and is a hidden gem, with views over the river and Malvern Hills.



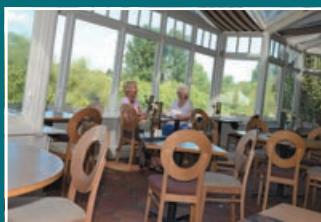
Open to non-residents, visitors are invited to call in and enjoy lunch, coffee or a drink, with food served daily from 12 - 9pm. The hotel extends a warm welcome to walkers and cyclists, and is dog friendly, with complimentary parking for guests and free wi-fi for all visitors.

Ideal as a wedding venue, the hotel is licensed for civil ceremonies and is a photographer's dream.

Severn Street WR1 2NF

T: 01905 353518 E: [diglis.house@hotmail.co.uk](mailto:diglis.house@hotmail.co.uk)

[www.diglishousehotel.co.uk](http://www.diglishousehotel.co.uk) Diglis House @diglishouse





### **Pamper yourself...**

From wobble plates to acupuncture, from barber shops to beauty salons, you'll find a whole spectrum of independent health and beauty businesses in Worcester, offering the latest treatments, natural therapy, top branded products and perfumes, eyewear and advice on living a healthy life. And when it comes to hair styling, you're spoilt for choice, whether you're looking for hair extensions, patterns, colouring, cutting or perming...



# Forty Eight Hair



## Also known as Mad P Hairsmith

Our salon is officially called Forty Eight Hair, but many know us as 'Mad P'!

Trading for 17 years, we have a long-standing client base and stylist, and the majority of our staff have been here since we opened. We're like a family, and customers can expect to find an extremely friendly, happy environment. In particular, we specialise in difficult hair, and pride ourselves on keeping 'on trend'.

We use Sebastian, L'Oréal and Kevin Murphy (sulphate and paraben-free) products. Please call for an appointment.

**Open: Tue - Sat 8.30am - late (ish)**

48 Friar Street WR1 2NA  
T: 01905 20441



# Fragrance House

## A world of perfume...

Fragrance House: Independent, British, specialist perfumery. Authorised stockists. Extensive range of branded fragrances at competitive prices. Worcester Customer Service Award Winners.

**10% discount available to Worcester BID cardholders, students (with proof) and OAPs**



Cathedral Plaza  
18 Pump Street WR1 2QY  
T: 01905 616732  
[www.fragrance-house.co.uk](http://www.fragrance-house.co.uk)  
f Fragrance-House  
@fragrancelstore

We offer an extensive range of Branded Fragrances and Body products which include creams, lotions and deodorants which are hard to find in other stores. Our range includes Lancome, Givenchy, Prada, Gucci, Dolce & Gabbana, Jimmy Choo, Jean Paul Gaultier, Issey Miyake, Valentino, Hugo Boss, Armani, Ralph Lauren, Yves Saint Laurent, Escada, Mont Blanc, Carolina Herrera, Paul Smith, Kenzo, Nina Ricci, Diesel, Paco Rabanne, Ghost, DKNY, Hilfiger, Aramis, Michael Kors and Zegna.

We also offer niche brands such as Comme des Garcons, Jean Patou, Van Cleef & Arpels, John Galliano, La Perla and Stella McCartney, Paloma Picasso, Guy Laroche, Karl Lagerfeld... We are one of the few UK stockists of Mark Birley for Men, considered to be one of the most luxurious fragrances in the world.

Always striving to exceed customer expectations, we offer a personal shopping experience with professional help on hand to help you find the right fragrance either for yourself or as a gift.

Visit Fragrance House for great offers, free fragrance samples and a loyalty scheme with up to 10% back.

**Open: Mon - Fri 10am - 5pm Sat 10am - 5.30pm**



# Kitsons Pharmacy

**Open:**

Mon - Fri 9am - 5.30pm

Sat 9am - 5pm

**More than just a pharmacy...**



As a traditional, family-run pharmacy, we focus on providing good customer service. Out of 136 customers surveyed during the past year, 136 rated us as good, very good, or excellent!

We offer a wide range of services and facilities, and this includes dispensing NHS and private prescriptions and advising on medicine and minor ailments. We can also advise you on how to live a healthy life, such as how to stop smoking or eat a healthy diet, and have recently been awarded Healthy Living Pharmacy status.

A pharmacist is always on duty, providing a friendly, helpful service and confidential personal health advice, if required.



We can order repeat prescriptions from all Worcester local GP practices and carry out a free NHS Medicines Use Review, useful if you regularly take several prescription medicines or medication for a long term illness. This confidential service helps you to find out more about your medicines, identify any problems you may be having and take your medicines to best effect.

A wide range of products is also on sale, including Mason Pearson hairbrushes, Bronnley products, walking sticks and aids for daily living, Kent grooming products, the Mavala nail care range, SOS Talisman, Weleda homeopathy tablets, mirrors, powder compacts and cosmetic bags, Fortuna reading glasses, First Aid, bath time products, joint supports, tablet boxes and Footzone including Orthaheels.



12 Broad Street WR1 3LH

T: 01905 22861

E: [kitsons.pharmacy@npanet.co.uk](mailto:kitsons.pharmacy@npanet.co.uk)

# Natural Healing

21 The Shambles WR1 2RA  
T: 01905 619188  
07411 945158  
E: zhoajianjia@hotmail.com



Natural Healing is Worcester's only Chinese natural therapy shop, offering a range of treatments, including acupuncture, Tui Na Massage (a form of Chinese medical acupressure), cosmetic acupuncture, cupping therapy, moxibustion, reflexology, ear candle and allergy testing; along with natural Chinese herbal medicine.

Chinese medicine is one of the oldest systems of medicine in the world, practised for over 2500 years, and primarily concerned with treating the symptoms rather than the cause, eradicating the cause of ill-health through holistic treatment of the individual. Gentle and safe, treatments are tailor made and aim to stimulate the body's own healing response, restoring the natural balance between mind, spirit and body.

Chinese herbal medicine and treatment is fully recognised by the World Health Organisation and is a popular alternative natural medicine choice, with acupuncture covered by HAS and other major health insurance companies.

Over ten years, Natural Healing has helped many people and established an excellent reputation. All practitioners have been trained in China and are fully qualified and highly experienced in both Chinese and western medicine.

To find out more or make an appointment, please call in at any time, telephone or email.



**Discover the  
benefits of Chinese  
natural therapy**





# Pure Hair & Beauty

A truly pampering hair & beauty experience

Full range of colouring, perming and cutting, and specialists in wedding and prom hair.

Beauty treatments include waxing, massage, manicures, pedicures and facials, with top brands such as OPI and Spa Fabulous Organics.

We offer a warm, friendly environment, with professional hair advice and the opportunity to talk through your hair styling requirements. Everyone is welcome at Pure Hair & Beauty.



## Now open Mondays

26 Reindeer Court WR1 2DS

T: 01905 617676

**Open: Mon - Sat**

## Special offers:

- **£10 off any one-hour treatment** (with Francesca, Beauty Therapist)
- **Free cut with any colour service** (Mon & Tue with Claire, Senior Stylist)
- **Full head foils and cut & finish £50** (with Beth)
- **15% student discount** (Tue, Wed & Thur)



# RMA Hair, Beauty and Tanning

## Award-winning hairdressers

6 St Nicholas Street WR1 1UW

T: 01905 25250 [www.rmahairdressing.co.uk](http://www.rmahairdressing.co.uk)  Rma Hair Beauty & Tanning

Rosanna Adams and her award-winning creative team have been in Worcester for over 10 years and specialise in hair extensions, as well as creative hair cutting, colouring, nail art and beauty treatments.

Rosanna is a hair extension specialist with over 20 years experience, who works alongside one of the biggest European hair extension companies and can offer 10 different methods of extension.

We run a relaxed yet professional salon, suitable for all clientele, including children; and offer hair products that will enhance our work.

Come along and meet our friendly staff for a free consultation. As a thank you to new customers, receive £10 off when you spend £30 or more.



**Lots of fantastic offers,  
including nails, plus new  
20% loyalty system**

**Hair extensions  
specialist**



**Open: 7 days a week, including two late nights until 7pm**





# Stephen John Eye Care

## Open:

Tue - Fri 9am - 5.30pm

Sat 9am - 4.30pm

By appointment only

Eyecare specialists since 2001, offering a wide range of spectacles, contact lenses and low vision aids. NHS and private eye care.

Call in and see our selection. Friendly personal service assured.







*The Guildhall*





# Trimz Barbershop

2 Queen Street WR1 2PL

[www.trimz-barber.co.uk](http://www.trimz-barber.co.uk) [f Trimz.bybenwarren](https://www.facebook.com/Trimz.bybenwarren)

## Young, trendy men's styling

We specialise in gents and boys haircuts and styling, for any age, any style, long or short.

Our shop is young and trendy, with a relaxed atmosphere, and we welcome every visitor with a smile. We're up-to-date with all the latest trends and styles and always willing to give advice if you're not sure what you want.

We also do patterns in the hair, all done freehand so you never see the same pattern anywhere else. If you have a pattern idea in mind, bring in a photo and we'll give it a go.

We sell a number of top brands, including Fudge, D:Fi, American Crew, Evo and Bedhead, suitable for all hair types and will advise which products suit you best. We also sell our own products, different textures for different styles.

No appointment needed, just walk in and take a seat. While you wait, you can watch TV, read a magazine or purchase a drink.

**Open: Tue - Fri 9am - 5.30pm**  
**Sat 8.30am - 4pm**



## Styling to aftercare...

Hans-Peter Wurmli runs Wicked Hair, a business that was originally started by his father in 1958. The salon has been in the High Street for 56 years, and has seen many changes over the years. In 2007, it was totally revamped and the name changed from Jon Quality Hairdressing to Wicked Hair.

Today, a large team of talented highly trained hairdressers offers a friendly, personal welcome and assistance with all aspects of hairdressing, except hair extensions.

In particular, the team is happy to provide guidance and help with any hair problems and, if necessary, can magnify the scalp to highlight any problems.

Call in and see us to discuss your hair and styling requirements.

"We design styles for individual face shapes, and concentrate on the aftercare - what will it look like when the customer styles their own hair?"

# Wicked Hair

### Open:

**Mon** 9am - 5pm **Tue, Wed & Thurs** 9am - 8pm  
**Fri** 9am - 5.30pm **Sat** 9am - 5pm

102 High Street WR1 2HW

Tel: 01905 26341 [www.wicked-hair.com](http://www.wicked-hair.com)

Wicked Hair Facebook

Win a ride in a Porsche up  
the Prescott Hill Climb!  
Call in for details.



# Wobbles

**Wobble your way to shape**

12 The Gallery, The Shambles WR1 2RD

T: 07718 795128

E: markbrown4662@yahoo.co.uk

f wobbles the shambles @WobblesWorc

**We've been open since 3rd August 2013  
and have achieved outstanding results,  
with over 1500 people on our books.**

Wobbles is Worcester's only whole body Oscillation Plate Salon, providing the easy way to lose weight using next generation technology. Get results simply by standing!

Wobble your way to shape and see amazing results, especially round the hips, bums and tums area.

Customers can expect to find a professional, friendly team, always on hand to help and explain how the technology works. We offer the first 10 minutes free, to give you a taster, plus other promotions are available in the salon.



**Pop in and try  
a wobble - it's  
fun, effective  
and the first  
10 minutes  
are free!**

## **Open:**

**Mon - Fri 7.45am - 5.30pm**

**Sat 8am - 4pm**



**Open:**

**Tue - Sat 10am - 5pm**

**Evenings & Sundays**

By appointment

25 Friar Street WR1 2NA

T: 01905 28993

E: you-for-you@zen.co.uk

www.youplusshop.com

f Judy At You t @youjudy



# YOUPlus

## Contemporary fashions for shapely ladies

Welcome to YOUPlus, a boutique specialising in contemporary clothes for ladies with shapely figures, up to size 24. The clothing ranges we have chosen support our passion for giving confidence to curvaceous ladies.

We have carefully selected brands to flatter the curvaceous woman. Choose from Masai, Join, Grizas, Aprico, Ochre Cashmere, Eden Rock, Ellbi and Fenella, and team your incredible outfits with our make up brand bareMinerals and nail polish from Essie.

Trading since 2007, owner Judy Owen has built up a dedicated and loyal customer base and extends a warm welcome to everyone. Call in for great service and expert advice - Judy is always on hand to help.

**Main supplier of  
bareMinerals makeup**





Judy Owen  
Owner  
YOUplus  
25 Friar Street WR1 2NA



Q. What is your favourite place for lunch in Worcester

A. My favourite restaurant is Saffrons in New Street. The food is home cooked and if I am looking for a quick lunch I will just have a bowl of homemade soup or a piece of fresh fish with a salad. If I don't have time to go out for lunch, I will order a sandwich from Mac and Jac's - homemade bread with a range of gorgeous fillings followed by a Bakewell tart. Not so good for the waistline but very yummy!

Q. What hidden gems are waiting for visitors to discover in Worcester?

A. The most exciting streets are always off the High Street. This is where many independent shops offer something different. These shops are all hidden gems in a beautiful historic city.

Q. Where would you recommend going to celebrate a client win or positive business news?

A. There are lots of great bars in Worcester,

but if you are looking for somewhere comfortable and sophisticated you need to visit Bindles. The Kir Royale is highly recommended by me. Definitely addictive!

Q. What is your favourite part of Worcester?

A. Friar Street and New Street. They are at the heart of all the independent shops and restaurants, and are wonderful cobbled streets with historic buildings, providing something for everyone, with a village atmosphere and masses of history.

Q. What is the best place for an after-work drink?

A. The Cardinal's Hat in Friar Street. It's the oldest pub in Worcester, with masses of history dating back to the fourteenth century. It's been modernised, yet retains the character of its heritage, providing a great meeting place.

[youplusshop.com](http://youplusshop.com)

## Education

### A rich educational heritage

Worcester has a rich educational heritage, boasting the University of Worcester campus to the north of the city centre, alongside the impressive new library building, The Hive, with the renowned public school, King's Worcester, situated to the south, adjacent to the Cathedral. Worcester College of Technology merged recently with North East Worcestershire College to form Heart of Worcestershire College the largest Further Education College in the county; while Kingsway School of English specialises in teaching English to an international clientele.







# Kingsway English Centre



## Learn to speak English with confidence...

Kingsway has been running for over 25

years and specialises in providing short, intensive English language training courses for professional people whose mother tongue is not English. We provide the whole package, including accommodation, airport transfers and social programme.

Based in stylish, spacious premises within Worcester city centre, we are obsessive about quality and all our services are designed for discerning adults.

From July 12th – Aug 9th 2015, we run an international summer school for teenagers at RGS. This is aimed at independent students rather than large monolingual groups, to complement our small boutique service.

### Homestays

We extend warm, friendly hospitality to our international clients and operate a register of homestays within Worcester city boundary, suitable for mature adults (average age around 40). During the summer, we also provide homestays for our junior programme. We are always looking for new homestays and operate a rigorous quality control system, with our accommodation manager visiting all prospective providers.

**For full details, see our website, pop in and see us, or give us a call.**

40 Foregate Street WR1 1EE

T: 01905 619877

E: [info@kingsway-english.com](mailto:info@kingsway-english.com)

[www.kingsway-english.com](http://www.kingsway-english.com)

 Kingsway English Centre

 @kingswayenglish

*The Hive*





# University of Worcester

## An internationally acclaimed university

We aim to be an outstanding university, committed to helping students achieve their potential and placing great importance on human values and true professionalism.

In our current economic climate the practical relevance of courses is more important than ever, and we combine academic excellence with strong workplace links to ensure our students gain the necessary skills and qualifications to succeed in today's world.

We look to continually improve teaching and facilities by taking advantage of the latest thinking, technology and research and benefit from a fully funded

£100m investment programme. Recently completed projects include our new City Campus, home to the Worcester Business School; The Hive, a joint venture between the University and Worcestershire County Council, providing an internationally-acclaimed resource; and the University of Worcester Arena, providing state-of-the-art sports facilities.

Over the past seven years the number of people applying to study with us has more than doubled, a rate of growth that is higher than the national average. If you would like to know more about the University of Worcester, please take a look at our website or, better still, book on to one of our Open Days to see us first hand.





University  
of Worcester

The Charles Hastings  
Building

St John's Campus,  
Henwick Road WR2 6AJ  
T: 01905 855000

E: [study@worc.ac.uk](mailto:study@worc.ac.uk)  
[www.worcester.ac.uk](http://www.worcester.ac.uk)

 University of Worcester

 @worchester\_uni



HEART OF  
WORCESTERSHIRE  
COLLEGE



# Heart of Worcestershire College

Deansway WR1 2JF T: 0844 880 2500 [www.howcollege.ac.uk](http://www.howcollege.ac.uk)

## Work related learning to boost your career prospects

Heart of Worcestershire College is a Further and Higher Education College offering a wide range of full time and part time courses in a diverse range of specialist subject areas. From courses for school leavers to affordable Higher Education and Professional qualifications, we ensure our training is relevant and will significantly improve your employability prospects.

We pride ourselves in delivering job related qualifications in high quality environments, enabling our students to achieve a positive and bright future.

Our staff and tutors are experts in their teaching area, with prior experience in their industry, and they provide extensive support and guidance, enabling students to succeed

and progress onto the next stage of their career journey.

We strongly believe in providing students with inspirational work experience and this is possible due to our extensive links with employers. We also have our own commercial facilities, including our travel agency and hair and beauty salons, which are open to members of the public.

Please note, Heart of Worcestershire College was previously Worcester College of Technology and North East Worcestershire College, and the two colleges merged on August 1st 2014. With campuses throughout Worcestershire, we are now the largest Further Education College in the County.



## From Regency charm to stylish newbuild

Worcester offers all types of property, with a preponderance of stunning Regency townhouses alongside sympathetic contemporary newbuild and renovation projects. Thanks to a number of highly respected estate agencies and letting agencies, with a long-standing and in-depth knowledge of the area, visitors and residents are in the best possible hands when it comes to either selling an existing property or locating a dream home, either in the city or surrounding areas.



# Andrew Grant

**59/60 Foregate Street WR1 1DX**

T: 01905 734734

E: [city.homes@andrew-grant.co.uk](mailto:city.homes@andrew-grant.co.uk)

[www.andrew-grant.co.uk](http://www.andrew-grant.co.uk)

## **Selling and letting a broad range of properties in Worcester for over 40 years**

We are the region's leading independent estate agents, offering bespoke and personal service and a wide choice of beautiful homes for sale or rent.

Our Worcester office hosts our specialist City Homes department, experts in marketing a diverse selection of property within the city, ranging from stylish loft apartments or contemporary homes to stunning Regency townhouses located within its famous squares.

The Worcester office is also the home of our flagship Country Homes department, which specialises in the sale of unique, prestigious properties throughout Worcestershire, Warwickshire, Shropshire, Herefordshire and across the border into Wales.

We will not only help you find your dream home, but assist you until the moment you open your new front door!

And if you are looking to market your home, simply give us the keys, sit back and let us do the rest!

**We are open in Worcester city centre  
7 days a week to assist our buyers, sellers,  
landlords and tenants.**

Valuations, Mortgages, Surveys,  
New Homes, Commercial, Property  
and Fine Art Auctioneers.





# Griffiths & Charles

Your friendly  
local estate agent



As one of Worcester's most established and trusted estate agents, we are pleased to offer a friendly, efficient service, whether you wish to sell, rent, purchase or lease any type of residential property in Worcestershire.

Our original business was established over 150 years ago and was rebranded in 2000, which means we've been around for a long time!

We care and try our best to assist in every situation, and clients will find us helpful, friendly, informative and professional.

We also specialise in property and collectables auctions and professional valuations.

57 Foregate Street WR1 1DZ

T: 01905 726464 E: [info@griffiths-charles.co.uk](mailto:info@griffiths-charles.co.uk) [www.griffiths-charles.co.uk](http://www.griffiths-charles.co.uk)

**Open: Mon - Fri 9am - 5.30pm Sat 9am - 2pm**



*Greyfriars' House  
& Garden*

The Greyfriars  
House and Garden Open  
Monthly - December 27th  
10.00am - 4.00pm  
Adults £1.00  
Children £0.50  
Family £3.00  
National Trust Members Free  
Membership of the National Trust is  
required to visit the House. The National Trust is a  
Registered Charity Number 205946



# Hills Estate Agents



## The local property expert

Welcome to Hills Estate Agents. The business was started in 1987 by Shirley Hill and has been a market leader in property sales and rentals throughout Worcester for over 25 years.

We are one of the longest established independently owned estate agents in the area with an in-depth knowledge of the market place and an enviable selection of properties for sale and rent. Over the years, we've developed a reputation for combining a modern approach with the traditional values on which the business was built.

We utilise the latest software, pictorial property details and floor plans, and advertise both online and in Worcestershire newspapers. We also market properties to our extensive database of suitable buyers and offer a 'no sale, no fee' service with no hidden costs. If required, we offer



independent mortgage advice and local conveyancing, and for the landlord we offer free valuations, full management or a tenant find service.

Whether you are interested in buying, selling, letting or renting, pop in for a friendly chat over a cup of coffee, so we can personally demonstrate our expertise and personal service.

**Open: Mon - Fri 9am - 5.30pm Sat 9am - 2pm**

46 Foregate Street WR1 1EE  
T: 01905 723545  
E: [info@hillsestateagents.co.uk](mailto:info@hillsestateagents.co.uk)  
[www.hillsestateagents.co.uk](http://www.hillsestateagents.co.uk)



# Premier Places

## Lettings, property management and rental property

As Worcester's largest independent lettings agency, we focus on providing a high level of customer service for both landlords and tenants.

We understand that renting your house or finding a home is an important decision and can be stressful. Our friendly, knowledgeable team are on hand to guide and support you, ensuring you and your home are well looked after.

Appointments available 7 days a week and week day evenings to discuss your options



31 Foregate Street WR1 1EE  
T: 01905 616616  
E: : [move@premierplaces.co.uk](mailto:move@premierplaces.co.uk)

[www.premierplaces.co.uk](http://www.premierplaces.co.uk)

[f premierplaces](#)

[@premierplaces](#)

[www.studentplaces.co.uk](http://www.studentplaces.co.uk)

[f studentplaces](#)

[@student\\_places](#)

**Quote 'Uniquely Yours' and receive 10% off the letting fee (landlords) and 10% off the application fee (tenants)**

### Open:

Mon 9.30am - 5.30pm

Tue - Thurs 9am - 5.30pm

Fri 9am - 5pm

plus late night viewing available

Sat 9am - 4pm

Sun viewings only

10am - 4pm



Julia Williams  
Owner and co-director  
Premier Places  
31 Foregate Street WR1 1EE

Q. What is the best place for an after-work drink?

A. Boleros has a superb vibe, with great service and staff. Lots of people I know go there and I am partial to a particular cocktail called 'Twinkle'.

Q. What is your favourite place for lunch in Worcester?

A. The Quay has a lovely setting by the river and serves superb food. They do amazing fresh fish platters. The staff are warm and friendly and I'm a huge fan of their Sunday lunch in particular. I go every Sunday. I also like to indulge in champagne afternoon tea.

Q. What is your favourite independent business in the Worcester BID area?

A. Hat House, located in Friar Street. Jane who owns the business creates fantastic, creative and original hats, and I always shop there if I need a hat for Worcester Races and other special occasions. I won

'best hat' at Ladies Day Worcester Races 2013 and was a finalist in 2014, wearing hats from Hat House.

Q. What would you recommend as a hidden gem in Worcester for visitors to discover?

A. The Chocolate Deli - as well as superb coffee and pastries, you can also buy amazing handmade artisan chocolates. My idea of heaven! My all time favourite product is a 'Choccy Choo', a handmade life size chocolate shoe, which looks far too good to eat! This is a must for visitors to Worcester!

Q. What is your favourite part of Worcester?

A. I love the Cathedral, it's a fascinating building steeped in history, being inside it is breath taking. I also love walking along the river, stopping off at The Quay and The Diglis House Hotel gardens for a drink.

[premierplaces.co.uk](http://premierplaces.co.uk)





## Professional Services

### First-class service you can depend on

Worcester city centre is home to a number of well-established and reputable independent, professional businesses. Whether you are seeking legal advice or representation, require a cost consultant or insurance cover, have an urgent print job or require design and marketing or digital services, Worcester can cater for all your requirements, providing a professional, quality service alongside the highest levels of personal attention.





# Bridgewater & Coulton

## Innovation balanced with experience

Bridgewater & Coulton is a firm of Chartered Quantity Surveyors, Cost Consultants, Project Managers, Employer's Agents and CDM Co-ordinators, with offices in Coventry and Worcester.

Established since 1935, we have the experience and expertise to assist our clients in all procurement routes and methods of construction, balanced with a highly innovative approach to ensure we provide the highest quality service on all projects.

We work for private, commercial and public sector clients on a wide range of projects, from £50k to over £20m and our track record to date is testament to our capabilities.

As required, we can advise on all elements of construction, including cost, design, quality, time, value for money, risk management, associated legal aspects, and health and safety.

**For a detailed discussion on your individual requirements please contact one of our partners who will be happy to assist.**

30 New Street WR1 2DP

T: 01905 26479 E: [Worcester@bandc-uk.info](mailto:Worcester@bandc-uk.info)

[www.bandc-uk.info](http://www.bandc-uk.info)



**Open: Mon - Fri 9am - 5.30pm**



# Harrison Clark Rickerbys

5 Deansway WR1 2J

T: 01905 612001 E: [info@hrcrlaw.com](mailto:info@hrcrlaw.com) [www.hrcrlaw.com](http://www.hrcrlaw.com) [f hrcrlaw](https://www.facebook.com/hrcrlaw) [t @hrcrlaw](https://twitter.com/hrcrlaw)

## Refreshingly different in every way

We are one of the country's leading law firms, with offices in Worcester since 1904, with the size, skills and resources to provide expert legal advice, whatever your requirement, competitively priced to provide real value for money.

What sets us apart is our dedication to providing exceptional service. We'll take the time to thoroughly understand your issues and provide a solution that is tailored to your needs. We'll also go the extra mile with added value services such

as free information updates, regular free seminars and networking events.

As proof of this, we are Lexcel accredited, the Law Society's rating for excellence in client care and practice management; and are regularly rated as First Tier by independent legal directories, Legal 500 and Chambers & Partners, significant badges of honour in our industry.

Whether you require personal assistance with family law, divorce, property, elderly clients, wills or probate; or

commercial services including property, employment law, corporate, insolvency, litigation, dispute resolutions and a whole range of specialist areas, a warm welcome awaits you.

So why not give us a try and experience the difference? Your initial consultation is free of charge, so please don't hesitate to give us a call.

### Open:

**Mon - Fri 8am - 6pm**  
(Out of hours/weekends by appointment.)



## Going the extra mile for our clients

We are a chartered and independent Insurance Brokers, specialising in arranging bespoke insurance solutions for businesses, property owners, private clients and charities. We also offer tenant referencing services to letting agents, via our HMS referencing team.

Operating from our professional offices in the heart of Worcester city, we are committed to providing each of our clients with the highest standards of personal service, along with the widest cover and competitive premiums.

Testament to our expertise and professionalism, we are one of the few brokers (less than 5%!) to hold chartered status within the UK. This status is only provided to brokers meeting the Chartered Insurance Institute's rigorous criteria for technical competence, integrity, capability and ethical conduct.

We are also Worcester BID's exclusive Insurance provider, which has shown time and again the amazing discounts we can offer, as well as a further discount against your annual BID levy!

Open 8.30am - 5pm, with access to an out-of-hours contractor for emergencies.



4 Edgar Street WR1 2LR

T: 01905 611951

E: [enquiries@hazeltonmountford.co.uk](mailto:enquiries@hazeltonmountford.co.uk)

[www.hazeltonmountford.co.uk](http://www.hazeltonmountford.co.uk)

 HazeltonMountford

 @HMInsuranceUK



**Always the right decision**





# Hewett Recruitment

38 Foregate Street WR1 1EE T: 01905 613413 E: [ben@hewett-recruitment.co.uk](mailto:ben@hewett-recruitment.co.uk)  
[www.hewett-recruitment.co.uk](http://www.hewett-recruitment.co.uk)  [hewettrecruitment](https://www.facebook.com/hewettrecruitment)  [@HewettBiz](https://twitter.com/HewettBiz)

## Recruitment from shopfloor to boardroom

Hewett Recruitment provides a complete solution covering Temporary, Permanent, Interim and Contract recruitment across such specialist sectors as Industrial, Commercial, IT & Technical, Engineering and Executive.

Director, Ben Mannion comments: "With over 30 years in the industry, we have an unrivalled knowledge of the local labour market. Our bespoke approach is based on taking time to understand the culture and ethos of our Clients, as well as their future growth plans, ensuring we provide a solution tailored to their needs. Candidates are not just placed in a job, we assess and advise on the next step in their career, based on their skills and ambitions."



"Whether you're a Candidate looking for career advice or a Client looking to source the right talent for your business, we offer a warm, friendly welcome. Pop in to our offices and have a chat with one of our team of professionally qualified Consultants to see how we can help you. You'll find us to be honest, adaptable, innovative and passionate about what we do."

**Open: Mon - Fri 8.30am - 5pm, plus 24/7 on call service**





**One-stop  
solution for  
creative,  
marketing,  
media, digital  
and print**

# Modus

54 Foregate Street WR1 1DX T: 01905 731529 E: [john@moduscreative.co.uk](mailto:john@moduscreative.co.uk)  
[www.moduscreative.co.uk](http://www.moduscreative.co.uk) [moduscreative](https://www.facebook.com/moduscreative) [@modus\\_creative](https://twitter.com/modus_creative)

Founded in 2006 Modus Creative is a full service creative agency in the centre of Worcester, offering design and marketing, and incorporating digital and print marketing via our sister companies, Modus Print and Modus Digital.

By operating across three individual disciplines, we are able to focus our creative thinking in each specialist area, as well as being able to pool our resources to tackle challenges that other creative or marketing agencies could not handle in-house.

More than just a design agency, we want to ensure that the message isn't simply

delivered but is understood by the end user. To achieve this, we will research, plan, review, construct and roll out a solution to maximise impact.

Our 21-strong team is fun, committed and talented, with the experience and skills to provide exactly what you need, whether you are a one-man band, SME or multi-national blue chip. We're always happy to put on a brew, grab a seat on the couch and talk through exactly how we can help your business, whatever your requirements.

So, our message is simple: give us a call, pop in and let's talk things through...



# Quality Solicitors Parkinson Wright



## Local firm, national network

Quality Solicitors Parkinson Wright is part of a national network of law firms and provides expert legal advice to individuals and businesses in the Worcestershire area.

We offer all legal services, including Family Mediation and Family Collaborative Law, with excellent customer service at the heart of all that we do.

Our business has been trading for 52 years and we pride ourselves on providing same day response along with open, transparent costs.

Whatever your legal requirements: residential, wills & probate, employment law, personal injury, commercial, intellectual property, debt collection or disputes, we offer a friendly, approachable service from an experienced, professional team.

### Open:


**Mon - Fri** 9am - 5pm **Sat** 9am - 12pm  
Appointments outside business hours available on request.

Haswell House, St Nicholas Street WR1 1UN  
T: 01905 721600

[www.qualitysolicitors.com/parkinsonwright](http://www.qualitysolicitors.com/parkinsonwright)

E: [Worcester@parkinsonwright.co.uk](mailto:Worcester@parkinsonwright.co.uk)

 [QualitySolicitorsParkinsonWright](https://www.facebook.com/QualitySolicitorsParkinsonWright)

 [@parkinsonwright](https://twitter.com/parkinsonwright)





*Advice, expertise and a friendly face*

## Scaiff LLP Solicitors

“

We both thank you so much for your hard work and the compensation settlement. We do really think you have done a great job, professionally and as a friend.”

**S Matthews**

(personal injury claimant)

Conveniently located in central Worcester, just minutes from the law courts, Scaiff LLP is a well established firm of solicitors, specialising in commercial law, conveyancing, family law, personal injury and wills & probate.

Trading since 1981, we have over 30 years' expertise, during which time we have built up relationships with other agencies and developed an ability to think outside the box.

We offer a friendly, accessible, professional environment with approachable solicitors who are willing to listen and help you complete your journey beyond the legalities.

**Call in and see us – we have a car park and plenty of tea and coffee.**



23 Foregate Street WR1 1DN

T: 01905 727700 E: [mail@scaiff.co.uk](mailto:mail@scaiff.co.uk)

[www.scaiff.co.uk](http://www.scaiff.co.uk)  [scaiffllpsolicitors](https://www.facebook.com/scaiffllpsolicitors)

**Open:**

**Mon - Thurs 9am - 5.15pm Fri 9am - 5pm**



# Source Design and Print

## Urgent print job? We can help...

From a new website or logo through to posters, letterhead or business cards, Source Design and Print provide a complete range of design and print services.

We offer design, litho and digital printing, posters, pull-ups, signage, outdoor banners, direct mail, websites, promotion products, personalisation and copywriting. Large format posters are printed on site. We offer on demand and next day printing for flyers and leaflets.

Whatever your requirements, talk to our friendly, experienced and professional team who will be pleased to provide design, print and marketing advice and a no-obligation quotation.

24 Foregate Street WR1 1DN  
T: 01905 29048  
[www.sourcedesignandprint.co.uk](http://www.sourcedesignandprint.co.uk)  
@sourceworchester

### Opening hours

Mon - Fri 8.30am - 5.30pm  
open after-hours by appointment

**Source**  
design and print







# Sub Studio Photography

Sub Studio Photography offers fun, modern and natural family portrait photography from a purpose-designed city centre studio.

Studio owner, David Lloyd-Rumens, formerly manager of Ice Fine Photography, explains what customers can expect to find: "We're an independent, family run business, and offer a warm welcome to customers visiting our bright, cheery, modern studio. We provide a fun and entertaining experience and even if some family members are reluctant to have their photo taken, they always leave our studio smiling!"

"We enjoy building a great relationship with every family, and our passion and approach means our clients often become friends and recommend us. We pride ourselves on our personal customer service and strive to beat expectations every time."

A family portrait costs just £25 and includes up to one hour studio time and a complimentary 10" x 8" framed print, with the opportunity to purchase larger frames or all images on disc.

**Natural, fun, family photography**



**Pop into the studio to book your session or purchase gift vouchers via our website**

**Open: Tue - Sat 9.30am - 5pm**

5 Copenhagen Street WR1 2HB

T: 01905 28157

E: [hello@substudiophotography.com](mailto:hello@substudiophotography.com)

[www.substudiophotography.com](http://www.substudiophotography.com)

 SubStudioPhotographyWorcester

 @SubStudioPhoto

**There's no friendlier place in Worcester than Sub Studio Photography!**



# Thursfields Solicitors

Thursfields is one of the region's most long established and reputable law firms. With over 100 staff in accessible offices across Worcestershire and the Black Country, we have the resources and expertise to provide a full range of legal services to you and your business. We offer practical, real advice and solutions to your legal problems, and to use our proven specialist expertise in all areas of the law to achieve the best possible outcome.

We would be delighted to assist you with your legal queries. To speak with one of our advisers please submit an enquiry on our website [www.thursfields.co.uk](http://www.thursfields.co.uk) or telephone us on 01905 730450.

## Integrity & Expertise

- Commercial & Corporate
- Business Start-Up
- Litigation
- Personal Injury
- Dispute Resolution
- Debt Recovery
- Insolvency
- Employment
- Mediation
- Residential & Commercial Property
- Family & Care Proceedings
- Wills & Estates

9-10 The Tything WR1 1HD and 42 Foregate Street WR1 1EF

T: 01905 730450 E: [info@thursfields.co.uk](mailto:info@thursfields.co.uk) [www.thursfields.co.uk](http://www.thursfields.co.uk)  @Thursfields





# Ventutec

Independence House, Queen Street WR1 2PL

T: 0845 259 1021 E: [info@ventutec.com](mailto:info@ventutec.com) [www.ventutec.com](http://www.ventutec.com)

 [ventutec](https://www.facebook.com/ventutec)  [@Ventutec](https://twitter.com/Ventutec)

## Pushing the boundaries of digital creativity

Ventutec is a multi-channel design and digital agency specialising in creative design, branding, website development, app development and marketing consultancy.

We offer a full suite of services, with in-house experts specialising in each area, and differ from other agencies due to our ability to provide a complete outsourced solution.

All our team members, from designers and copywriters through to SEO experts,

take an active interest in every project and continually strive to deliver new ideas, functionality and innovation. By working together to ensure the optimum outcome for our clients, we are able to tackle any project that comes our way, no matter how big or complex.

To discuss your requirements, whether you require branding, web design, marketing or domain hosting, call or email us today and let us provide a high performance solution for you.

## A shopping experience like no other...

Worcester offers a truly vibrant shopping experience. There are four main covered shopping centres in the city centre: the CrownGate Shopping Centre, Cathedral Plaza, The Gallery and Reindeer Court, providing an exceptional selection of shops.

The main shopping area is located on the High Street, a pedestrianised area that is home to a number of major multiples' stores. The other main thoroughfares are The Shambles and Broad Street, while The Cross and its surrounding areas forms the city's financial centre, where the majority of banks are located.

In addition to the well known High Street stores, Worcester is home to an abundance of independent shops, boutiques, eateries and cafés, which can be found on the major thoroughfares, in the main shopping centres or tucked away on ancient cobbled streets.

It is this mix of old and new that gives Worcester its charm and makes it such a fantastic shopping venue, combining the mainstream and conventional with the quirky and unusual, enabling the visitor to find major brands and High Street names alongside the bespoke and original all in one visit.

Whether you're visiting to shop or make use of Worcester's many professional services, you'll find a truly tempting selection of restaurants, cafés, coffee houses, pubs and bars, providing refreshment whenever you need it, daytime or evening.

Nestling on the banks of the River Severn, with the Cathedral to the south and the University of Worcester campus to the north, Worcester enjoys an idyllic location, making any shopping trip a perfect day out. This is retail therapy at its best!





## Accommodation

**Diglis House Hotel** Severn St  
**Fownes Hotel** City Walls Road  
**Premier Inn** New Road  
**Travelodge** High St  
**Worcester Whitehouse Hotel** Foregate St  
**Ye Olde Talbot Hotel** Friar Street

## Attractions

**Greyfriars' House & Garden (NT)** Friar St  
**The Commandery** Sidbury  
**The Guildhall** High St  
**The Infirmary Museum** Castle St  
**The Museum of Royal Worcester** Severn St  
**Tudor House** Friar St  
**Worcester Cathedral** College Yard  
**Worcester City Museum and Art Gallery** Foregate St

## Education

**Academy Dance** Infirmary Walk  
**Heart of Worcestershire College** Deansway, Riverside, The Butts  
**Kingsway School of English** Foregate St  
**Neos IT** Copenhagen St  
**Pitman Training** New St  
**The Elgar School of Music** Deansway  
**The King's School** College Green  
**University of Worcester** Infirmary Walk  
**Youth Development Centre** St Nicholas St

## Entertainment & Leisure

**Backhouse Bet** Angel St  
**Bet Fred** The Cross  
**Coral Bookmakers** Foregate St & Trinity St  
**Gala Club** Foregate St  
**Huntingdon Hall/Worcester Live** Chapel Walk  
**Ladbrokes** The Cross  
**Odeon Cinema** Foregate St  
**Shipleys Amusements** Angel Place  
**Vue Cinema** Friar St  
**William Hill** The Cross  
**Worcester Arts Workshop/Café Bliss** Sansome St  
**Worcester Judo Club** Foregate St  
**Worcestershire County Cricket Club** New Road

## Finance/Insurance

**A-Plan Insurance** Foregate St  
**Barclays Bank** High St  
**Bishop Fleming Rabjohns** College Yard  
**European Wealth** Shaw St  
**Hargreave Hale** The Butts  
**HSBC Bank** Broad St

**Halifax** St Swithin's St  
**Hazelton Mountford** Edgar St  
**Jelf Clarke Roxburgh** Foregate St  
**Lloyds Bank** The Cross  
**McCarthy Taylor** Edgar St  
**My Home Finance** Farrier St  
**Nationwide Building Society** High St  
**NatWest Bank** The Cross  
**Prosser Knowles Associates** Castle St  
**Royal Bank of Scotland** St Nicholas St  
**Santander** Broad St  
**Skipton Building Society** The Cross  
**Smith & Williamson** Copenhagen St  
**Swinton** The Trinity  
**TSB** Mealcheapen St  
**The Co-operative Bank** The Cross  
**The Money Shop** Foregate St

## Health & Medical (Non-Retail)

**CRI Pathways to Recovery** Castle St, Shaw St  
**CrownGate Physiotherapy Centre** Friary Walk  
**Trinity Gate Dental Practice** St Nicholas St  
**Worcester Walk-In Health Centre** Farrier St

## Legal/Advisory

**Children Family Court Advisory & Support Service** The Butts  
**Citizens' Advice Bureau** The Hopmarket  
**Connexions Herefs. & Worcs.** Farrier St  
**Harrison Clark Rickerbys Solicitors** Deansway, High St  
**Parkinson Wright Solicitors** St Nicholas St  
**Relate Worcestershire** Castle St  
**Scaiff LLP** Foregate St  
**Stallard March & Edwards** Foregate St  
**The Worcester Family Law Practice** Foregate St  
**Thomas Guise** Foregate St  
**Thursfields** Foregate St  
**West Mercia Womens Aid** Foregate St

## Office/Miscellaneous

**A V Band** St Nicholas St  
**All Saints Church Centre** Chapel Walk  
**CrownGate Shopping Centre Offices** Friary Walk  
**D M Brands** Bank St  
**FML - Freeflow Management** St Swithin's St  
**Freshwater Group** St Nicholas St  
**Library Estates** Broad St  
**Modus Creative** Foregate St  
**Pearson Driving Assessments** St Nicholas St

**Restdale House Business Centre** Foregate St  
**The Angel Centre (Worcester)** Angel Place  
**Unite The Union** Severn St  
**Ventutec** Queen St  
**Worcester Cathedral Enterprises** College Green

## Property

**Allan Morris** Sidbury  
**Andrew Grant Estate Agents** Foregate St  
**Andrew Grant Lettings** Foregate St  
**Berkeley Homes (Oxford and Chiltern)** Severn St  
**Bridgewater & Coulton Partners** New St  
**Firmingers Chartered Quantity Surveyors** Castle St  
**Connell Estate Agent** Foregate St  
**Darvist Property** Trinity St  
**Griffiths & Charles** Foregate St  
**Halls** Foregate St  
**Health & Safety Executive** St Nicholas St  
**Hills** Foregate St  
**Knight Frank** College St  
**Martin & Co.** Foregate St  
**Northumberland Estates Property Management**  
 The Butts  
**Premier Places** Foregate St  
**RA Bennett & Partners** Foregate St  
**Reeds Rains Estate Agents** Foregate St  
**Sanctuary Housing Association** Castle St  
**Select Lets** Shaw St  
**Spencer & Co.** Foregate St  
**Taylor's Estate Agents** Foregate St  
**Town & Country Estate Agents** Foregate St  
**Your Move** Foregate St

## Public Agency

**Armed Forces Careers** Foregate St  
**Crown Court** Foregate St  
**Department for Work & Pensions** St Nicholas St,  
 Farrier St  
**Hereford & Worcester Fire & Rescue Service**  
 Copenhagen St  
**The Hive** Sawmill Walk  
**Worcester Police Station** Castle St  
**West Mercia Probation Trust** Shaw St  
**Worcester City Council** Farrier St  
**Worcester Magistrates Court** Castle St  
**Worcestershire Regulatory Services** The Butts

## Public Houses & Clubs

**Bar 12** Cornmarket  
**Bushwackers** The Cross

**Casablanca Wine Bar** Copenhagen St  
**Charltons Café Bar** New St  
**Eagle Vaults** Friar St  
**Farriers Arms** Fish St  
**Horn & Trumpet** Angel St  
**Keystones Cocktail Club** Copenhagen St  
**King Charles II** New St  
**Mode Sports Bar & Grill** Angel Row  
**O'Neill's** St Nicholas St  
**Royal Exchange** Cornmarket  
**Sin** New St  
**Slug & Lettuce** The Cross  
**The Cardinal's Hat** Friar St  
**The Conservatory** Friar St  
**The Courtyard** St Nicholas St  
**The Cricketers** Angel St  
**The Crown** Crown Passage  
**The Hand in Glove** College St  
**The Kings Head** Sidbury  
**The Old Rectifying House** North Parade  
**The Pheasant** New St  
**The Plough** Fish St  
**The Postal Order** Foregate St  
**The Swan with Two Nicks/Drummonds** New St  
**Tramps Nightclub** Angel Place  
**Velvet Nightclub** Angel Place  
**Woo Bar** St Nicholas St

## Recruitment

**Adecco** St Nicholas St  
**Blue Arrow** Bank St  
**CY Executive Resourcing** The Cross  
**Clarkewood Consulting** Copenhagen St  
**E Response Recruitment** Foregate St  
**First Personnel Group** The Butts  
**Hays Recruitment Experts** Trinity Passage  
**Louise Hewett Recruitment** Foregate St  
**Premiere People** Foregate St  
**Randstad** High St  
**Step by Step Recruitment** St Nicholas St  
**The Best Connection Group** Queen St

## Restaurants, Cafés & Takeaways

**Amigos Mexican Restaurant** Friar St  
**Angel Chef Oriental Restaurant** Angel St  
**Ayaan's** Angel St  
**Baguette Man** Broad St  
**Benedicto's** Sidbury  
**Bill's** Chapel Walk  
**Bindles Bar & Brasserie** Sidbury  
**Bolero Bar & Kitchen** Foregate St



**Boston Tea Party** Broad St  
**Browns Wine Bar** Quay St  
**Café Mela** Foregate St  
**Café Rouge** Friar St  
**Caffe Bolero** St Nicholas St  
**Caffe Nero** The Shambles & Broad St  
**Carluccio's** Chapel Walk  
**Charles Café Bar** Sidbury  
**Chesters Café Restaurant** New St  
**Chicks** The Cross  
**Chung Ying Garden** Friar St  
**Clockwatchers Café** Mealcheapen St  
**Coffee Dough** Chapel Walk  
**Coffee Warehouse** The Foregate  
**Colston Bakeries** Broad St  
**Cornish Bakehouse** Broad St  
**Costa Coffee** The Cross, High St & Foregate St  
**Crown Burger & Kebab House** Angel Place  
**Deli Corporation** Sidbury  
**Detroit's** Castle St  
**Double Sushi** Cornmarket  
**Efes Takeaway** Angel St  
**Elgars Coffee Shop** Reindeer Court  
**Flames World Buffet** The Foregate  
**French Connection Baguettes** The Foregate  
**Galleria Italiana** Friar St  
**Ginger Pig Café Bar & Bistro** Copenhagen St  
**Greggs Bakers** High St & The Shambles  
**House** Chapel Walk  
**House of Coffee** High St  
**Karma Indian Restaurant** Broad St  
**Karmic Café** The Shambles  
**Mason's Olive & Bean** Pump St  
**Massalla Indian Restaurant** Broad St  
**McDonalds** The Foregate  
**Mediterranean Fish Bar** Broad St  
**MY Coffee** The Cross  
**Nando's Chicken Restaurant** Friar St  
**Paisleys Sandwich Bar** Trinity St  
**Pan Pizza** New St  
**Papa's Caffe** New St  
**Parsons** The Shambles  
**Peri'os** Foregate St  
**Ping An Oriental** Pump St  
**Pizza Express** College St  
**Poppins** The Foregate  
**Puccini's Restaurant** Friar St  
**Quinn's Coffee House** Friary Walk  
**Saffrons Bistro** New St  
**Scoffs Street Food** Mealcheapen St  
**Siam Smile** College St  
**Simply Eat** The Cross

**Singapore Restaurant** Friar St  
**Subway Sandwich Shop** The Cross  
**Thai Galley** Friar St  
**The Green Room** Chapel Walk  
**The Old Palace/Worcester Diocesan Board**  
 Deansway  
**The Olive Branch** Church St  
**The Pizza Shop** Foregate St  
**The Quay** South Quay  
**Time to Eat** The Hopmarket  
**Valentino's** Foregate St  
**Worcester Kebab House** Shaw St  
**Zizzi** High St

## Retail - Arts & Crafts

**Brimstone Gallery & Gifts** Reindeer Court  
**Creative Hands** College St  
**Curiouser & Curiouser** Lychgate Mall  
**Frame Warehouse** Trinity St  
**Hopmarket Wools** The Hopmarket  
**Joy - New Age Shop** The Hopmarket  
**PSW Paper & Print** Foregate St  
**Rags** Chapel Walk  
**The Cotton Reel** Broad St  
**The Kings Gallery & Mangojuice Gallery** New St  
**The Paintbox** Mealcheapen St  
**Worcester Live - Support The Arts** The Shambles

## Retail - Charity Shops

**Acorns Children's Hospice Trust** Mealcheapen St  
**Age UK** Mealcheapen St  
**Barnardo's** Mealcheapen St  
**Birch Hill Dog Rescue** Reindeer Court  
**Blue Cross** Mealcheapen St  
**Books for Free** High St  
**British Heart Foundation** Mealcheapen St  
**Cancer Research UK** The Cross  
**Fresh Start Foundation** Sansome St  
**Headway Charity Shop** Reindeer Court  
**Oxfam** High St & Mealcheapen St  
**Scope** St Swithin's St  
**Shelter Trading** Mealcheapen St  
**Snowdrops** Reindeer Court  
**St Richard's Hospice Foundation** Mealcheapen St & St Swithin's St  
**Worcester Snoezelen** Reindeer Court  
**YMCA** Lychgate Mall

## Retail - Children's Clothes & Toys

**Early Learning Centre** Chapel Walk  
**Hawkin's Bazaar** Chapel Walk  
**Kidz Baby Shop** Charles St

## BID Business Directory

**Little Puds** Chapel Walk  
**Mothercare** Friary Walk  
**Schooltogs** New St  
**The Entertainer** The Shambles  
**Toys & Games of Worcester** Broad St  
**Wise Owl Toys & Left 'n' Write** Charles St  
**Worcester Wargames** Crown Passage

### Department Stores

**Argos** The Shambles  
**Debenhams** High St  
**House of Fraser** Chapel Walk  
**Marks & Spencer** High St  
**T K Maxx** High St

### Retail - Electrical/ Technology

**Three Mobile** High St  
**AT Computers** Broad St  
**Brighthouse** Broad St  
**EE** High St & Pump St  
**Get Connected** Pump St  
**London Camera Exchange** Pump St  
**Max Spielmann** The Shambles  
**02** High St  
**Phones 4 U** High St & The Shambles  
**Solutions Worcester** Charles St  
**Sony Centre** The Shambles  
**The Carphone Warehouse** High St  
**Thompson Disc. Electrical** City Arcade & Friary Walk  
**Vodafone** The Shambles

### Retail - Entertainment

**CEX** Pump St  
**Family Entertainment** The Hopmarket  
**GAME** Broad St  
**Games Workshop** College St  
**Noah's Fancy Dress** The Shambles  
**The Ultimate Party Shop** Angel Place

### Retail - Fashion

**23 Knots** High St  
**Acanthus** Cornmarket  
**Accessorize** High St  
**Animal** Chapel Walk  
**Ann Summers** High St  
**Bon Marche** Friary Walk  
**CC & Viyella** Pump St  
**Claire's Accessories** Chapel Walk  
**Court Leather** Reindeer Court

**Dare** Reindeer Court  
**Dorothy Perkins/Burton** High St  
**Edinburgh Woollen Mill** High St  
**Embrace** Reindeer Court  
**Emporio** Friar St  
**Exchange & Smart** New St  
**Fat Face** High St  
**Fourleaf Clothing** New St  
**Fuel** Reindeer Court  
**Gerry Weber** Chapel Walk  
**Greenwoods** The Shambles  
**H & M** High St  
**Halo Style** Chapel Walk  
**Individual Tailoring** The Foregate  
**Jack Wills** High St  
**Jaeger** High St  
**Jingo Menswear** Pump St  
**Joules** High St  
**Just Leather** The Hopmarket  
**Monsoon** High St  
**Mr Big - Big & Tall Menswear** High St  
**New Look** Friary Walk  
**Next** High St  
**Nicholas Smith** New St  
**Perfections Bridal Emporium & Studio** Friar St  
**Pockets Menswear** Friar St  
**Primark** Chapel Walk  
**Prophecy** Cornmarket  
**Reefs** Chapel Walk  
**Reloaded Boutique** Crown Passage  
**River Island** High St  
**Rock Follies Vintage** Reindeer Court  
**Rohan** Broad St  
**Roman** Chapel Walk  
**Sassy** Mealcheapen St  
**Stripes** The Foregate  
**Taking Shape** The Shambles  
**Topshop/Topman** High St  
**Twenty Five Boutique** Friar St  
**Two Seasons** Chapel Walk  
**Vibe** Friary Walk  
**Whisper** Friary Walk  
**White Stuff** High St

### Retail - Food & Drink

**Chocolate Deli** New St  
**Co-operative Food** Angel St  
**Housewives Choice** Church St  
**Iceland** Friary Walk  
**Jessica's** Mealcheapen St  
**Lifestyle Express** Broad St  
**M & M Meats** St Swithin's St



**Mac & Jac's Delicatessen** Friar St  
**Malpas Stallard** Fish St  
**Nostalgic Sweets** Chapel Walk  
**Papson's Continental Deli** Cornmarket  
**Tesco Express** Foregate St  
**Thorntons** The Shambles  
**Whittard of Chelsea** Chapel Walk  
**Yum Yum Oriental Foods** St Nicholas St

## Retail - Gifts, Flowers & Cards

**Adorned** Reindeer Court  
**Card Factory** The Shambles  
**Cardstop** The Shambles  
**Clinton Cards** High St  
**Flowers of Worcester** Chapel Walk  
**Karma Shack** New St  
**Monkee Business** Reindeer Court  
**Smart Ideas** The Shambles  
**The Gift Company** Chapel Walk  
**The Little Card Company** Friary Walk

## Retail - Hairdressing

**Apparicio Hair Design** Pump St  
**Archetti Hair Design** New St  
**Camo** Reindeer Court  
**Celly's** The Shambles  
**Chop Shop** Charles St  
**Cutting Edge** Reindeer Court  
**Diva (City of Wolverhampton College)**  
 Reindeer Court  
**Enigma** Bank St  
**Express Cuts** The Hopmarket  
**Forty Eight Hair** Friar St  
**His Hers Hair** Broad St  
**Inspiration** College St  
**Julie Drew** Mealcheapen St  
**Kents Hairdressing** Cornmarket  
**RMA Hairdressing** St Nicholas St  
**Regis Hair** The Shambles  
**Strands** New St  
**Taylor Bennett** Friar St  
**The Clip Joint** New St  
**Toni & Guy** The Foregate  
**Trimz** Queen St  
**Umberto Giannini** Pump St  
**Wicked Hair** High St

## Retail - Health & Beauty

**Amplifon** The Shambles  
**Boots** High St  
**Brauchli Opticians** St Swithin's St  
**Dominic Tunnell Opticians** Mealcheapen St

**Fragrance House** Pump St  
**Gods of Ink** Broad St  
**Holland & Barrett** Mealcheapen St  
**Hollywood Nails** St Swithin's St  
**Juliet's Hair & Beauty** The Cross  
**Kitsons Pharmacy** Broad St  
**Lush** High St  
**Nails Inc** Angel Place  
**Natural Healing** The Shambles  
**Pura** Broad St  
**Pure Hair & Beauty** Reindeer Court  
**Revital** The Shambles  
**Rocky's Supplements** St Swithin's St  
**Sanza Beauty** The Shambles  
**Savers Health & Beauty** City Arcade  
**Shuropody** Mealcheapen St  
**Simply Beautiful** St Swithin's St  
**Smoker's Angel** Pump St  
**Specs Express** St Swithin's St  
**Specsavers** Broad St  
**Stephen John Eye Care** Charles St  
**Superdrug** Friary Walk & High St  
**Tan** Angel Place  
**The Blue Lotus Tattoo** The Hopmarket  
**The Body Shop** Chapel Walk  
**The Imperial Herbary** The Hopmarket  
**Vision Express** Friary Walk  
**Wobbles** The Shambles  
**Worcester Style Nails** Angel Place  
**You** Friar St

## Retail - House & Home

**Amoré** Pump St  
**Anglian Home Improvements** College St  
**Assunta's Stitch & Sew** The Hopmarket  
**Cookmate** Broad St  
**Cornucopia** High St  
**County Furnishings** Castle St  
**Hallowood** The Shambles  
**Insitu** Friar St  
**Interiors by Hannah** High St  
**Laura Ashley** Crown Passage  
**Multiyork Furniture** Pump St  
**Nevitt Lighting** Broad St  
**New England Country Store** Broad St  
**Poundland** The Shambles & Broad Street  
**Sarah Ireland Bathrooms** Broad St  
**Suites Direct** St Nicholas St  
**Summit Status Group** Queen St  
**SWAN Luxury Gifts & Interiors** Friar St  
**Tallulah Blue** Chapel Walk  
**Trinity Pets & Gardens** Trinity St

**Worcester Blinds** Friar St  
**Worcester Furniture Exhibition Centre** Cornmarket

### Retail - Jewellery

**A Forrest-Hay** The Cross  
**Anja Potze Fine Jewellery** Friar St  
**Crystal Chain** Chapel Walk  
**David Christopher** The Cross  
**Ernest Jones Jewellers** High St  
**Fatlip** Chapel Walk  
**G6 Jewellery** Pump St  
**H Samuel** High St  
**Ian Quartermaine Jewellers** The Shambles  
**ICE Fine Jewellery** Chapel Walk  
**Mark Linley Jewellers** Friar St  
**Pandora** High St  
**Peplow Jewellers** High St  
**Pritchards** The Foregate  
**Quarter Jewellery** The Shambles  
**Rock Lobster** Reindeer Court  
**Trilogy** Reindeer Court

### Retail - Music

**Cranes Music** New St & Reindeer Court  
**HMV** High St  
**Music 47** Sidbury  
**Music City** The Trinity  
**Rise** Chapel Walk

### Retail - Services

**Cash Concepts** Broad St  
**Cash Converters** Foregate St  
**Cash Generator** The Shambles  
**Cheque Centre** The Shambles  
**Indy Mobility** Broad Street  
**Hopmarket Trophies** The Hopmarket  
**House of Dogs** New St  
**Johnsons the Cleaners** Mealcheapen St  
**Mail Boxes etc** Friar St  
**R & R Goldbuyers** Lychgate Mall  
**Source Design & Print** Foregate St  
**Sub Studio Photography** Copenhagen St  
**The Market** Angel Place  
**Timpsons** Mealcheapen St & St Swithin's St  
**Toes** The Hopmarket  
**Worcester City Cobbler** St Swithin's St  
**Worcester Hearing Centre** Cornmarket

### Retail - Shoes & Footwear

**Clarks Shoes** High St

**Hotter Shoes** High St  
**Jones Bootmaker** The Shambles  
**Keith Scarrott** High St  
**La Danse** The Hopmarket  
**Moshulu** High St  
**Office Shoes** High St  
**Robin Elt Shoes** The Shambles  
**Russell & Bromley** High St  
**Shoe Zone** Broad St  
**tReds** High St

### Retail - Sports

**DW Sports** High St  
**JD Sports** The Shambles  
**Knowles Sports** Broad St  
**Sports Direct** Friary Walk

### Retail - Stationary, Books & Newsagents

**Andrews News** Friary Walk  
**Ryman Stationery** Friary Walk  
**Sunbeams** The Hopmarket  
**The Works** Friary Walk  
**WH Smith** High St  
**Waterstone's** City Arcade

### Retail - Transport

**Skellerns Motorcycles** Sidbury  
**Worcester Cycle Centre** College St

### Retail - Travel & Outdoor

**Blacks** The Shambles  
**Co-op Travel** City Arcade  
**F Durrant & Son** Mealcheapen St  
**Field & Trek** Broad St  
**Knowles Travelgoods** Broad St  
**Mountain Warehouse** Broad St  
**Thomas Cook** High St  
**Thomson** Chapel Walk  
**Trespass** High St  
**Vida** The Shambles

### Transport

**Castle St Service Station** Castle St  
**Exhaust Tyres & Batteries** Farrier St  
**Halfords Autocentre** The Butts  
**Mr Tyre** The Butts  
**The Car Refurb Centre** The Butts

Please note, this business directory only includes Worcester BID levy paying businesses and is not an exhaustive list. Businesses featured contributed to the funding of this publication.



*The Guildhall*





## The making of Uniquely Yours

Uniquely Yours has been several months in the making and is the brainchild of Worcester

BID officers, Adrian Field and Nadja von Dahlen, with support from Michelle Payne, Martin Clews and Karl Turner.

The project was organised by Modus Design and Print, who took responsibility for compilation, design and print – with special thanks to Guy Marson, Karen McStay and Sam Taylor for overviewing the project, and Pippa Jones for design.

Thanks also go to freelance copywriter Pat Spence ([www.spencecopy.co.uk](http://www.spencecopy.co.uk) [@pat\\_spence](https://twitter.com/pat_spence)) for supplying the words and freelance photographer Steve Carse for taking such superb photographs. Steve is an award-winning photographer who works both on location and in the studio, specialising in still life, product and lifestyle photography. He is experienced in all sectors, especially retail, industrial, education, sport and leisure, and all media. To see more, check out his online gallery, [infinityphoto.co.uk](http://infinityphoto.co.uk) [@steve\\_carse](https://twitter.com/steve_carse)



4 Copenhagen Street WR1 2EY  
T: 01905 731612 E: [info@worcesterbid.com](mailto:info@worcesterbid.com)  
[worcesterbid.com](http://worcesterbid.com)



54 Foregate Street WR1 1DX  
T: 01905 731529 E: [info@moduscreative.co.uk](mailto:info@moduscreative.co.uk)  
[moduscreative.co.uk](http://moduscreative.co.uk)

## Thank you for visiting Worcester and our events



Details correct at the time of going to print (August 2014). Listings are subject to change and Worcester Business Improvement District (BID) and individual businesses featured cannot be held responsible or liable for any errors, omissions and/or change. Worcester BID does not endorse any business participating in the promotional activity. Any offers featured are at the individual promoter's discretion and subject to availability.









 WorcesterBID  @WorcesterBID  
[worcesterbid.com](http://worcesterbid.com)

**shop eat play | live worcester**

